

Industrial pollution



Germany 

December 2016

Photo: © Edwin van Buuringen



Cover design: EEA

Cover photo: Edwin van Buuringen (Creative Commons 2.0) <https://goo.gl/9nLwwZ> – modified by EEA

Layout: EEA

Acknowledgements

This country profile was prepared by the European Environment Agency in cooperation with the European Topic Centre for Air Pollution and Climate Change Mitigation (ETC/ACM). The ETC/ACM authors were Justin Goodwin, Katrina Young and Kathryn Hampshire (Aether, UK).

The EEA project manager was Daniel Martin-Montalvo Álvarez. Eva Goossens (EEA) also contributed to the country profiles. Andy Martin (EEA) was the editor.

Contents

Introduction	3
The significance of industry	5
The significance of industry in terms of gross value added	
The significance of industry in terms of energy consumption	
The significance of industry in terms of water usage	
Industrial releases to air	8
The significance of industry in terms of emissions to air	
Trends for key air pollutant releases	
Industrial releases to water	10
The significance of industry in terms of releases to water	
Trends for key water pollutant releases	
Industrial waste generation	12
The significance of industry in terms of generation of waste	
Waste generation trends	
References	15
Units, abbreviations and acronyms	16

Introduction

Industry across the data sources

Although industry makes a significant contribution to the economic welfare and development of a country, pollution from industrial activities can also negatively affect people and the environment. Impacts such as premature deaths and damage to ecosystems occur as a result of the release of pollution to air and water, through the disposal of waste, and through the demand for resources and energy. Industrial sources still contribute a substantial proportion of total pollution in Europe. Pollution from industry is subject to national, European and international regulations, and standards that limit releases, waste and resource use.

Data sources

These country profiles present a set of graphs and tables that show the significance of industrial pollution using data from several sources:

- Eurostat's statistics on economy and finance (Eurostat, 2016a), energy (Eurostat, 2016b), water consumption (Eurostat, 2016c) and waste generation (Eurostat, 2016d);
- the European Environment Agency's (EEA's) compilation of data on emissions of air pollutants that will be submitted to the Convention on Long-range Transboundary Air Pollution (CLRTAP) (EEA, 2016a);
- the European Pollutant Release and Transfer Register (E-PRTR) (EEA, 2016b).

This country profile includes the data that were available from these sources on 22nd November 2016.

Definition of industry

Because of the different legal definitions of 'industry' used in the various data sets, certain assumptions have been made so that industry is considered in a consistent way (see the accompanying 'Country profiles — industrial emissions: Methodology report', hereafter referred to as the methodology report, for full details).

What is industry?

Industry refers to the production of goods or services within an economy. The different data sources used in these country profiles interpret this definition in slightly different ways. These country profiles have attempted to cover comparable activities across the different databases used. In summary, the activities selected across the data sets are the energy industry, metal production, cement and lime production, mining and quarrying, the chemical industry, manufacturing, the waste industry (including water and sewage management), and the distribution of electricity, gas, steam and air conditioning.

The energy used for transport related to the above industrial activities (except pipelines for the transmission of energy) and agricultural activities is not included.

The source codes for the data included are presented in Annex 1 of the accompanying methodology report. In summary, these include:

- NACE divisions B, C, D and E ;
- NFR categories 1A1, 1A2 (except 1A2gvii), 1A3e, 1A4ai, 1A4bi 1A4ci, 1A5a, 1B, 2 (except 2A5b, 2D3a) and 5;
- all E-PRTR sectors except 5f, 7a and 7b.

Economic sectors (based on the Statistical classification of economic activities in the European Community (NACE) divisions) are used in an attempt to harmonise the scope of industry across data sources. NACE divisions B, C, D and E cover the industrial activities discussed in these country profiles. NACE divisions consist of multiple NACE activities. A full list of activities under B, C, D and E is given in Table A1.1 of the methodology report.

Table I.1 NACE divisions

NACE division code	NACE division name
B	Mining and quarrying
C	Manufacturing
D	Electricity, gas, steam and air conditioning supply
E	Water supply; sewerage, waste management and remediation activities

The application of NACE divisions in the context of the different data sources is discussed below.

- The Eurostat data (Eurostat 2016a, 2016b, 2016c and 2016d) include NACE activities as part of the data set, and are extracted using the above NACE divisions as criteria. The grouping of categories for energy consumption (Eurostat, 2016b) and gross value added (GVA) (Eurostat, 2016a) are provided in Tables A1.4 and A1.5, respectively, of the methodology report.
- Industrial facilities report their main NACE activity as part of their reporting to the E-PRTR (EEA, 2016b), and data are extracted on the basis of the NACE divisions in Table I.1. Before data are aggregated up to NACE divisions, facilities that report their E-PRTR sector as 'Urban Waste Water Treatment Plants' (5.f), 'Installations for the intensive rearing of poultry or pigs' (7a) or 'Intensive aquaculture' (7b) are excluded.
- NACE activities are not included in the CLRTAP data (EEA, 2016a), which group emissions into Nomenclature for Reporting (NFR) categories. Emission categories do not have a one-to-one relationship with economic categories. Instead, the NFR categories are mapped to E-PRTR sectors, as limited by NACE divisions B, C, D and E, and excluding the sectors described above. These NFR categories are aggregated to give larger industry sectors, as detailed in Table A1.2 of the methodology report. The NFR categories reported under CLRTAP, but excluded from industry, are grouped together as 'non-industry', as detailed in Table A1.3 of the methodology report. The most significant non-industry categories are transport and agriculture.

The pollutants included in these country profiles have been defined as such on the basis of multiple criteria, with a focus on those pollutants under specific industrial legislation. As a result, the country profiles do not track emerging pollutants.

Methodology

The detailed methodology for the development of this country profile is available in the same URL where this country profile is made available at the EEA website.

Country coverage

These country profiles cover all 33 current EEA member countries (EEA33), which include the 28 European Union Member States together with Iceland, Liechtenstein, Norway, Switzerland and Turkey.

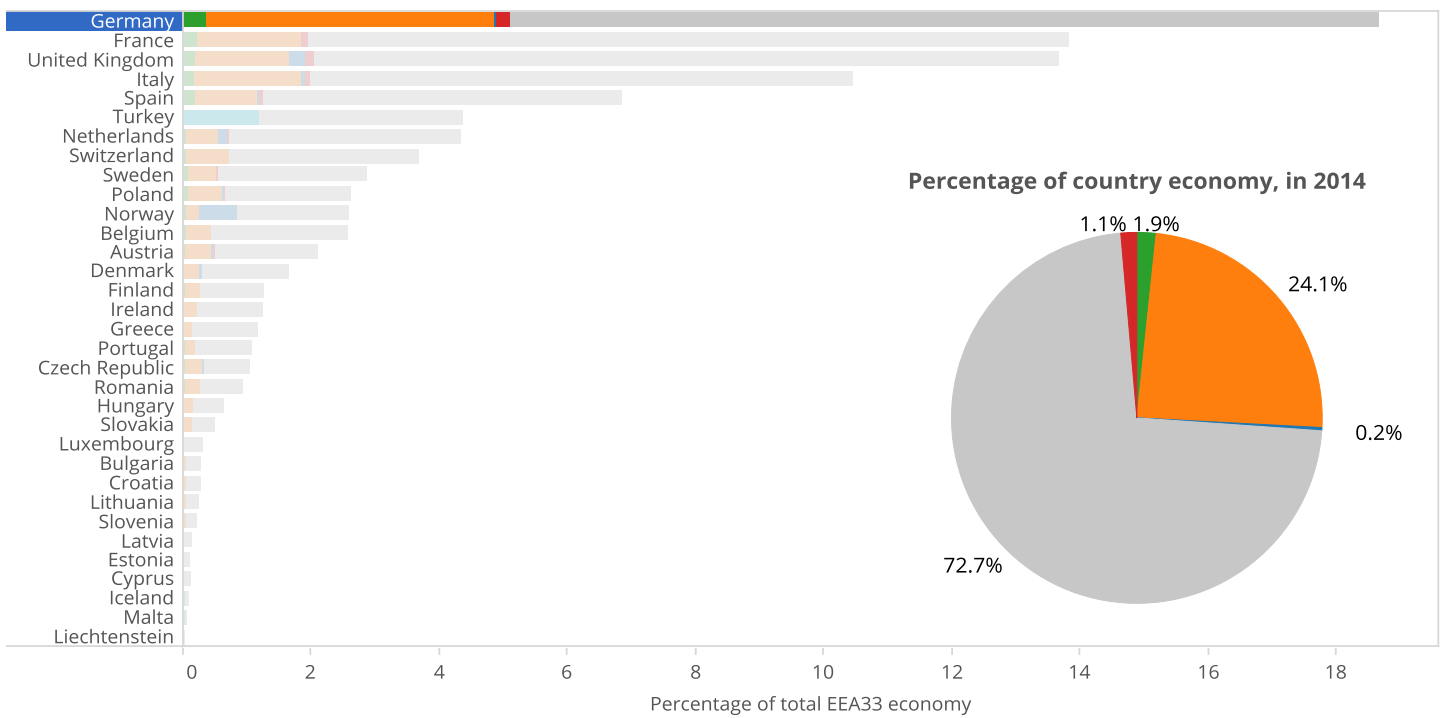
The graphs and tables presented in this document contain data that relate to Germany and the other EEA member countries. However, in some cases data were not available for one or more countries. Below each table and figure, information on the data source and the countries for which data were missing is included.

The significance of industry

THE SIGNIFICANCE OF INDUSTRY WITHIN THE ECONOMY IN TERMS OF GROSS VALUE ADDED

This section shows the significance of industry in the context of the economy. The parameter used is GVA, which captures the value of industry in terms of the goods and services provided by an economic activity.

Figure 1. GVA of industry as a percentage of EEA33 economy, and within Germany, in 2014



Source: Eurostat, 2016a. Data gap-filled according to methodology

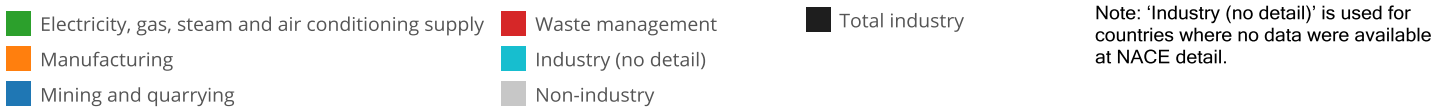
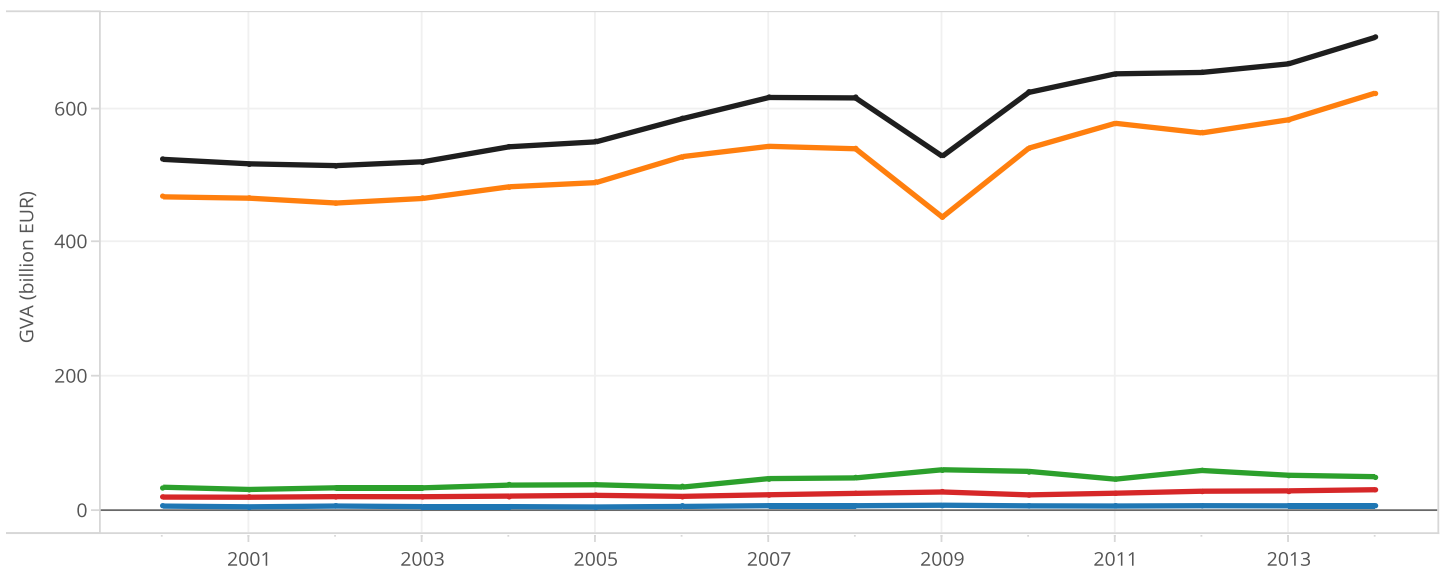


Figure 2. Evolution of the GVA of industry in Germany, in billion EUR, for 2000-2014



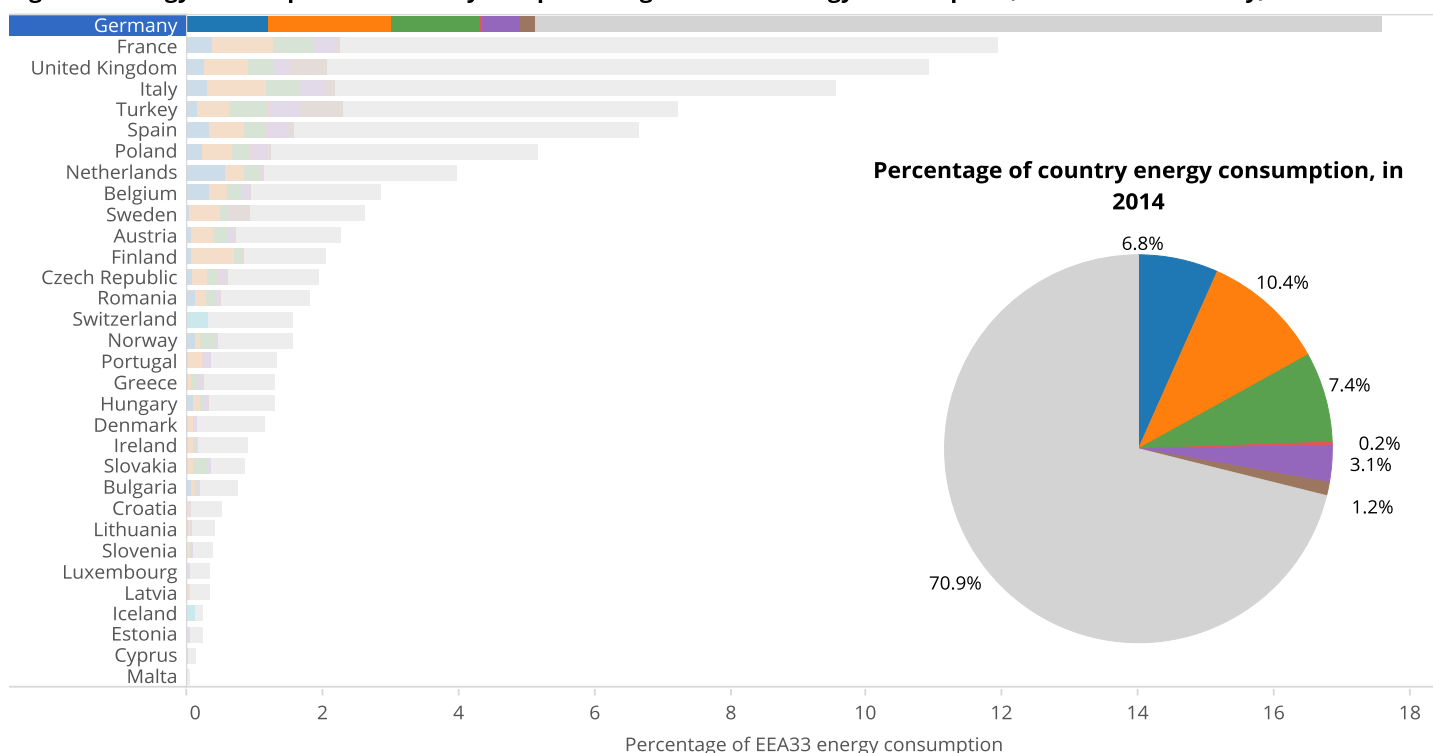
Source: Eurostat, 2016a. Data gap-filled according to methodology

GVA (€billion)	2006	2007	2008	2009	2010	2011	2012	2013	2014
Electricity, gas, steam and air conditioning supply	33.21	45.92	46.91	59.10	56.68	45.02	58.04	50.87	48.77
Manufacturing	527.26	542.66	538.98	436.80	539.92	577.08	562.67	582.35	622.20
Mining and quarrying	4.27	5.37	5.32	6.08	5.13	4.88	5.37	5.17	5.27
Waste management	19.33	21.75	23.81	25.86	21.55	24.04	27.05	27.56	29.27
Total industry	584.07	615.70	615.02	527.83	623.27	651.02	653.11	665.95	705.51

THE SIGNIFICANCE OF INDUSTRY IN TERMS OF ENERGY CONSUMPTION

This section shows the significance of industry as an energy consumer. The parameter used is final energy consumption, which is the energy supplied to the consumer (i.e. industry in this case) to run the industrial processes considered in this country profile.

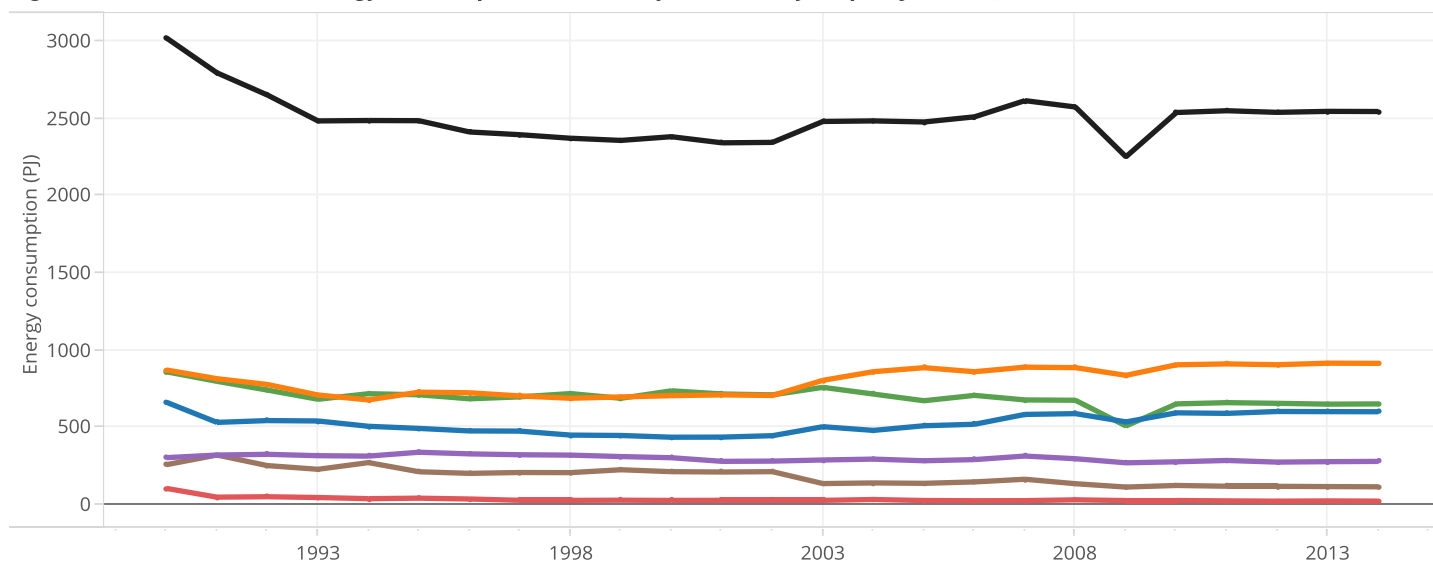
Figure 3. Energy consumption of industry as a percentage of EEA33 energy consumption, and within Germany, in 2014



Source: Eurostat, 2016b. No data were available for Liechtenstein. The data were 'gap-filled' in accordance with 'gap-filling' methodology (see methodology report).



Figure 4. Evolution of the energy consumption of industry in Germany, in petajoules (PJ), for 1990-2014



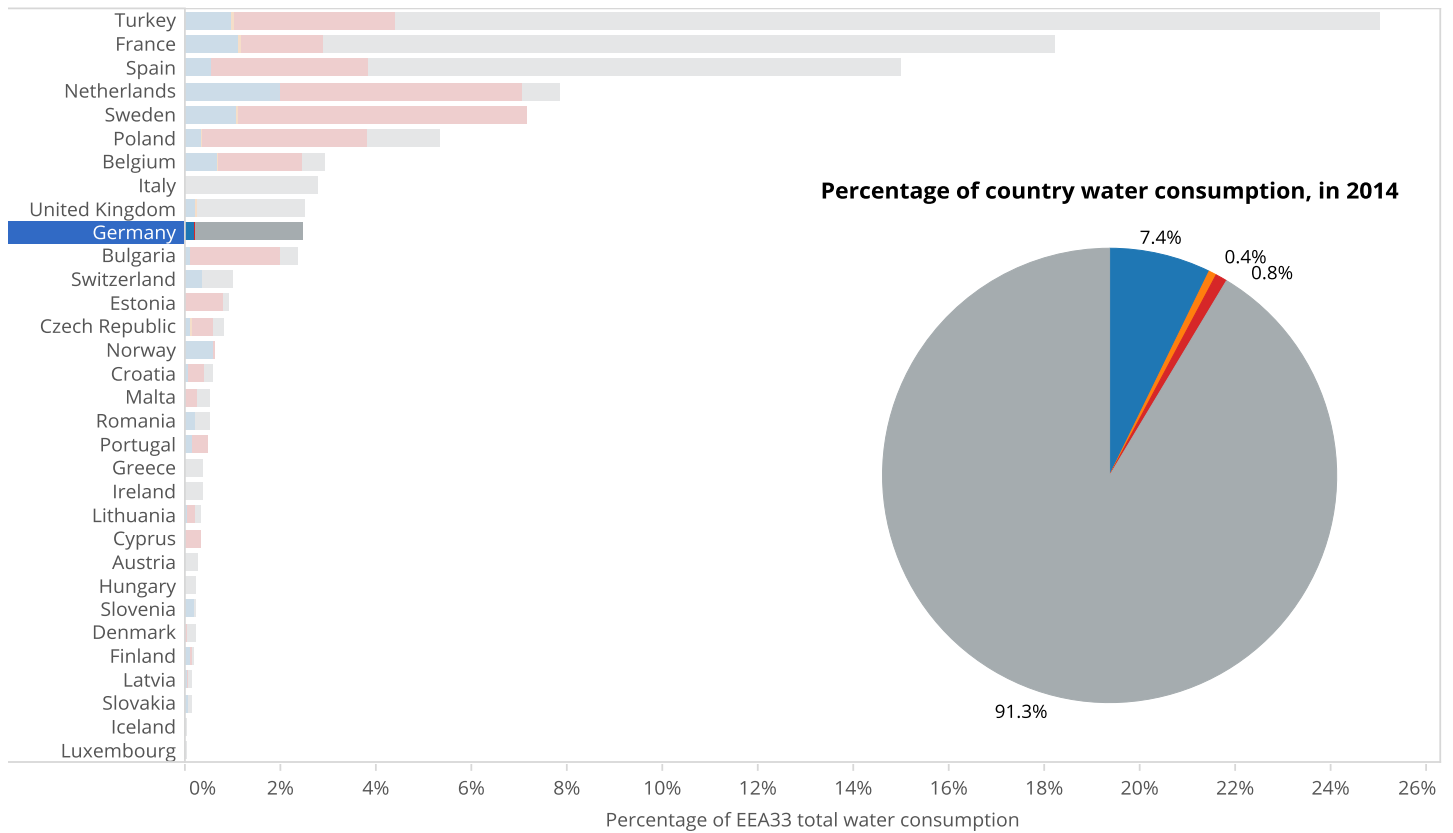
Source: Eurostat, 2016b. The data were 'gap-filled' in accordance with 'gap-filling' methodology (see methodology report).

Energy consumption (PJ)	2006	2007	2008	2009	2010	2011	2012	2013	2014
Chemical industry	513.1	577.0	582.1	528.5	587.2	583.7	595.9	595.0	594.4
Manufacturing	854.0	883.6	880.4	830.6	898.9	904.7	899.5	909.4	908.4
Metal industry	700.5	671.0	668.8	502.2	645.3	653.4	648.9	643.6	645.2
Mining and quarrying	17.0	17.6	23.0	18.3	18.4	16.0	14.2	15.7	14.5
Non-metallic minerals	283.8	306.9	289.6	263.1	269.6	278.4	267.7	270.5	272.2
Other industry	139.0	156.5	127.5	105.8	116.1	111.0	110.5	108.8	107.4
Total industry	2 507.4	2 612.6	2 571.4	2 248.4	2 535.6	2 547.1	2 536.6	2 543.0	2 542.0

THE SIGNIFICANCE OF INDUSTRY IN TERMS OF WATER USAGE

This section shows the significance of industry as a water consumer. The parameter used is water usage, which accounts for the water supplied to the consumer (i.e. industry in this case) for all the water uses that are necessary in order to run the processes of the industrial activities considered in this profile. This covers 'public', 'self' and 'other' water supplies.

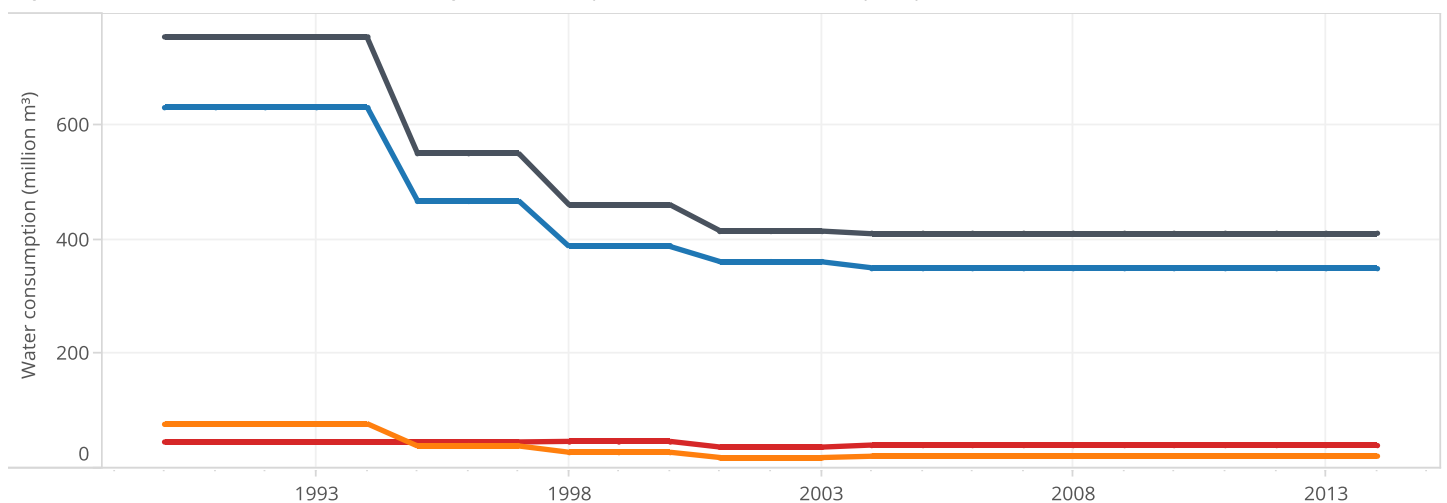
Figure 5. Water usage by industry as a percentage of EEA33 water usage, and within Germany, in 2014



Source: Eurostat, 2016c. No data were available for Liechtenstein. The data were 'gap-filled' in accordance with 'gap-filling' methodology (see methodology report).



Figure 6. Evolution of industrial water usage in Germany, in million cubic metres (Mm³), for 1990-2014



Source: Eurostat, 2016c. The data were 'gap-filled' in accordance with 'gap-filling' methodology (see methodology report).

Water consumption (Mm³)	2006	2007	2008	2009	2010	2011	2012	2013	2014
Manufacturing	349.6	349.6	349.6	349.6	349.6	349.6	349.6	349.6	349.6
Mining and quarrying	20.0	20.0	20.0	20.0	20.0	20.0	20.0	20.0	20.0
Production and distribution of electricity	39.6	39.6	39.6	39.6	39.6	39.6	39.6	39.6	39.6
Total industry	409.2	409.2	409.2	409.2	409.2	409.2	409.2	409.2	409.2

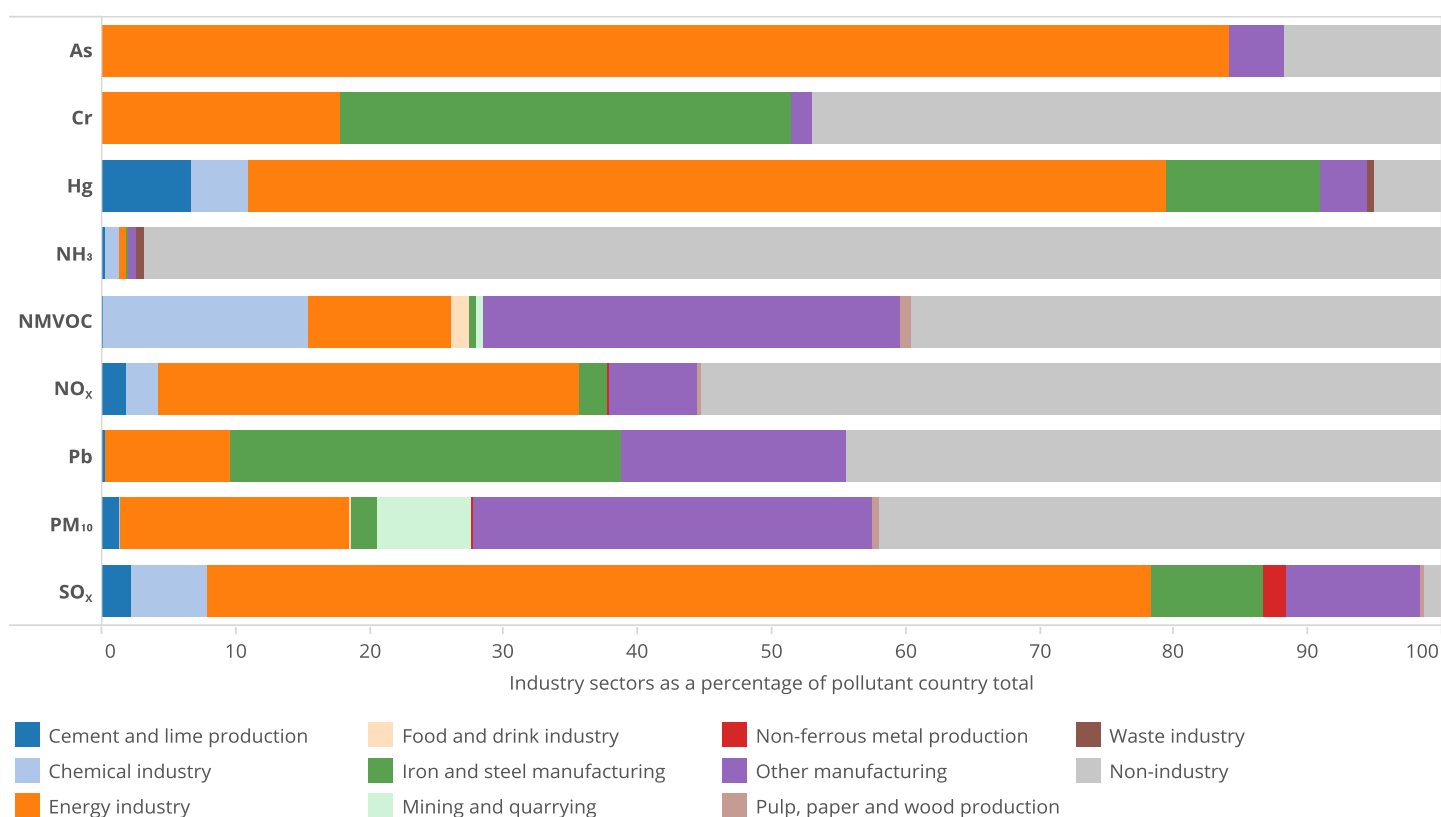
Industrial releases to air

THE SIGNIFICANCE OF INDUSTRY IN TERMS OF EMISSIONS TO AIR

Air pollution harms human health and the environment. In Europe, emissions of many air pollutants have decreased substantially in recent decades, resulting in improved air quality across the region. However, air pollutant concentrations are still high, and air-quality problems persist. The selected pollutants for which data are provided in this section are those that cause significant pressure on the environment and human health. Nitrogen oxides (NO_x), sulfur oxides (SO_x) and ammonia (NH₃) can cause acidification and/or eutrophication; non-methane volatile organic compounds (NMVOCs) contribute to ground-level ozone formation; and particulate matter (PM₁₀) is harmful to human health. Finally, the release of heavy metals leads to their accumulation in the food chain, which is an issue of concern given their toxicity. The heavy metals considered in this country profile are arsenic (As), chromium (Cr), lead (Pb) and mercury (Hg).

Figure 7. Industrial air emissions as a percentage of total country pollution, by sector origins, in Germany for 2014

The coloured sections of the bars represent the contribution of the different industrial sectors to the emissions to air for each pollutant. The grey areas reflect the contribution from human activities other than industry. The quantities, expressed as percentages, refer to the country's total air emissions for each pollutant. The smaller the grey area, the more significant the industrial releases of the particular pollutant. In the CLRTAP, NO_x is reported as nitric oxide and nitrogen dioxide (NO₂), expressed as NO₂, and SO_x covers all sulfur compounds, expressed as sulfur dioxide (SO₂) (including sulfur trioxide, sulfuric acid and reduced sulfur compounds, such as hydrogen sulfide, mercaptans and dimethyl sulfides, etc.).



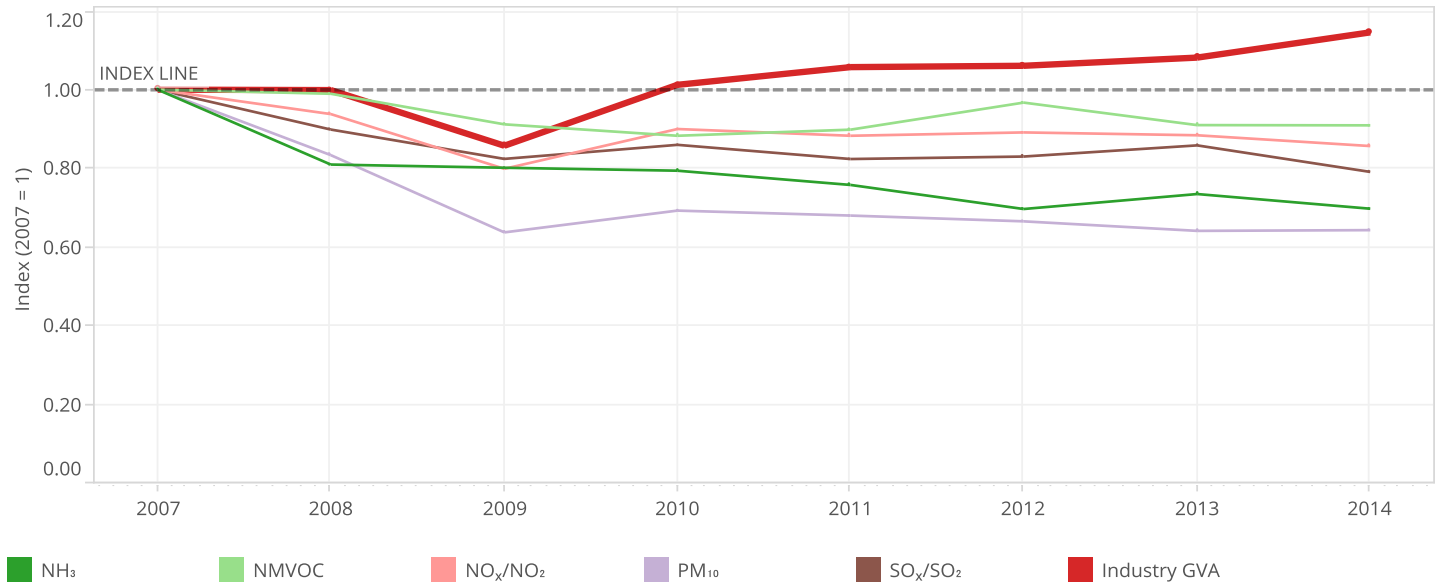
Source: EEA, 2016a.

Emissions (tonnes)	As	Cr	Hg	NH ₃	NMVOC	NO _x	Pb	PM ₁₀	SO _x
Cement and lime production	-	-	0.61	1 564.44	1 468.85	22 574.87	0.43	2 866.24	8 535.10
Chemical industry	-	-	0.39	7 903.99	158 633.54	28 908.41	-	416.81	21 998.57
Energy industry	4.22	10.08	6.25	4 589.50	111 578.00	384 852.60	20.06	37 415.26	273 567.16
Iron and steel manufacturing	-	18.97	1.05	188.27	4 659.81	25 863.89	62.19	4 372.94	32 405.07
Mining and quarrying	-	-	-	-	5 975.74	-	-	15 368.70	-
Non-ferrous metal production	-	-	0.00	6.40	66.84	817.17	0.00	481.49	6 691.23
Other manufacturing	0.21	0.90	0.32	5 439.85	323 800.09	81 326.67	35.89	65 831.43	38 468.69
Pulp, paper and wood production	-	-	-	-	7 819.46	3 008.39	-	1 045.91	1 233.51
Waste industry	-	-	0.05	3 549.49	6.43	407.82	0.00	9.89	55.86
Food and drink industry	-	-	-	-	14 715.02	-	-	422.74	-
Non-industry	0.59	26.58	0.46	716 545.31	412 631.66	676 534.75	94.87	92 841.26	5 078.82

TRENDS FOR KEY AIR POLLUTANT RELEASES

Emissions and economic growth trends are often coupled. One of the aims of environmental policy is to decouple economic growth from emissions and drive down emission trends, while allowing economies to continue to grow. The decoupling of industrial emission trends from industry GVA growth can be absolute (i.e. emissions decrease as GVA increases) or relative (i.e. emissions increase at a slower rate than GVA). Selected pollutant releases, indexed to 2007 (the first year of reporting under the E-PRTR), are presented together with industrial GVA (see Figure 2), also indexed to 2007, to show the coupling or decoupling of pollutant releases with economic growth.

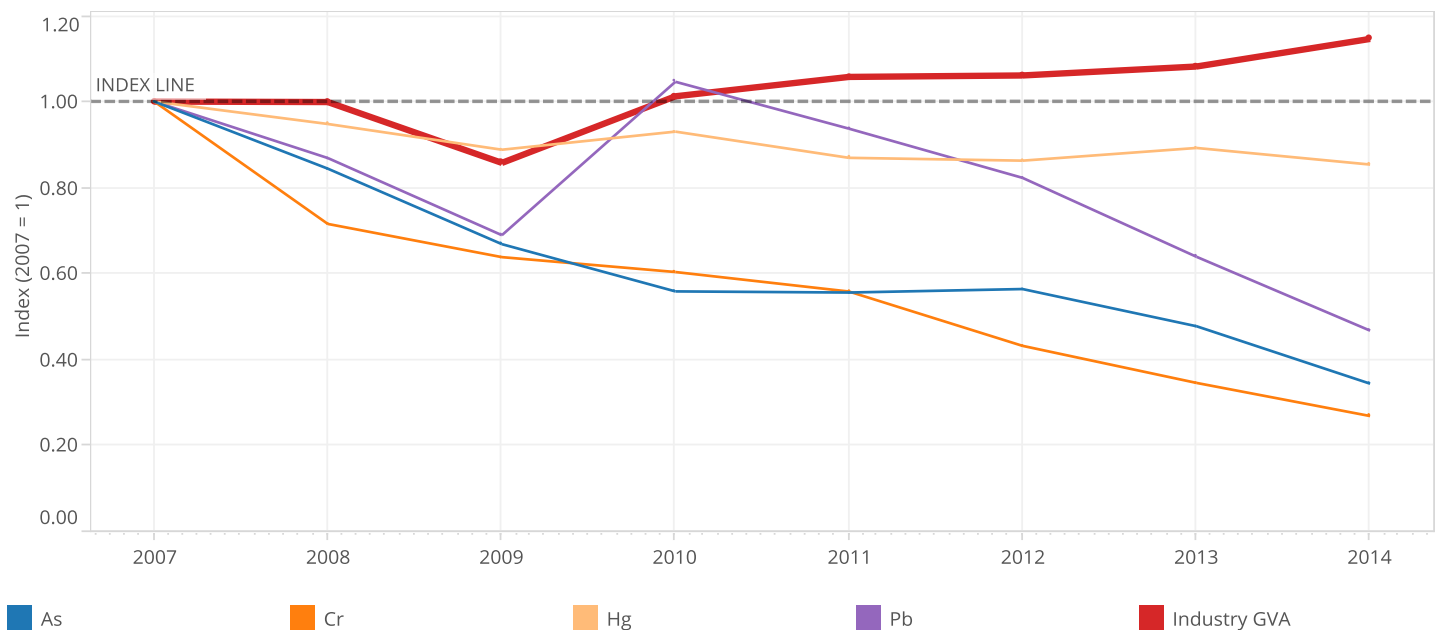
Figure 8. Industrial air pollution (based on E-PRTR data) from non-heavy metals versus economic growth in Germany, 2007-2014



Source: EEA, 2016b.

Releases (tonnes)	2007	2008	2009	2010	2011	2012	2013	2014
NH ₃	5 327	4 311	4 268	4 228	4 035	3 709	3 912	3 713
NMVOC	45 522	45 048	41 506	40 180	40 887	44 023	41 414	41 387
NO _x /NO ₂	366 459	343 695	292 637	329 744	323 449	326 574	323 916	313 871
PM ₁₀	15 698	13 082	9 995	10 865	10 667	10 436	10 056	10 084
SO _x /SO ₂	294 279	264 404	242 424	252 950	242 327	244 181	252 546	232 668

Figure 9. Industrial air pollution (based on E-PRTR data) from heavy metals versus economic growth in Germany, 2007-2014



Source: EEA, 2016b.

Releases (kg)	2007	2008	2009	2010	2011	2012	2013	2014
As	4 457	3 760	2 978	2 487	2 476	2 512	2 126	1 530
Cr	19 836	14 186	12 654	11 966	11 065	8 558	6 846	5 317
Hg	7 802	7 395	6 928	7 257	6 781	6 729	6 960	6 659
Pb	71 459	62 063	49 236	74 752	66 950	58 772	45 638	33 360

Industrial releases to water

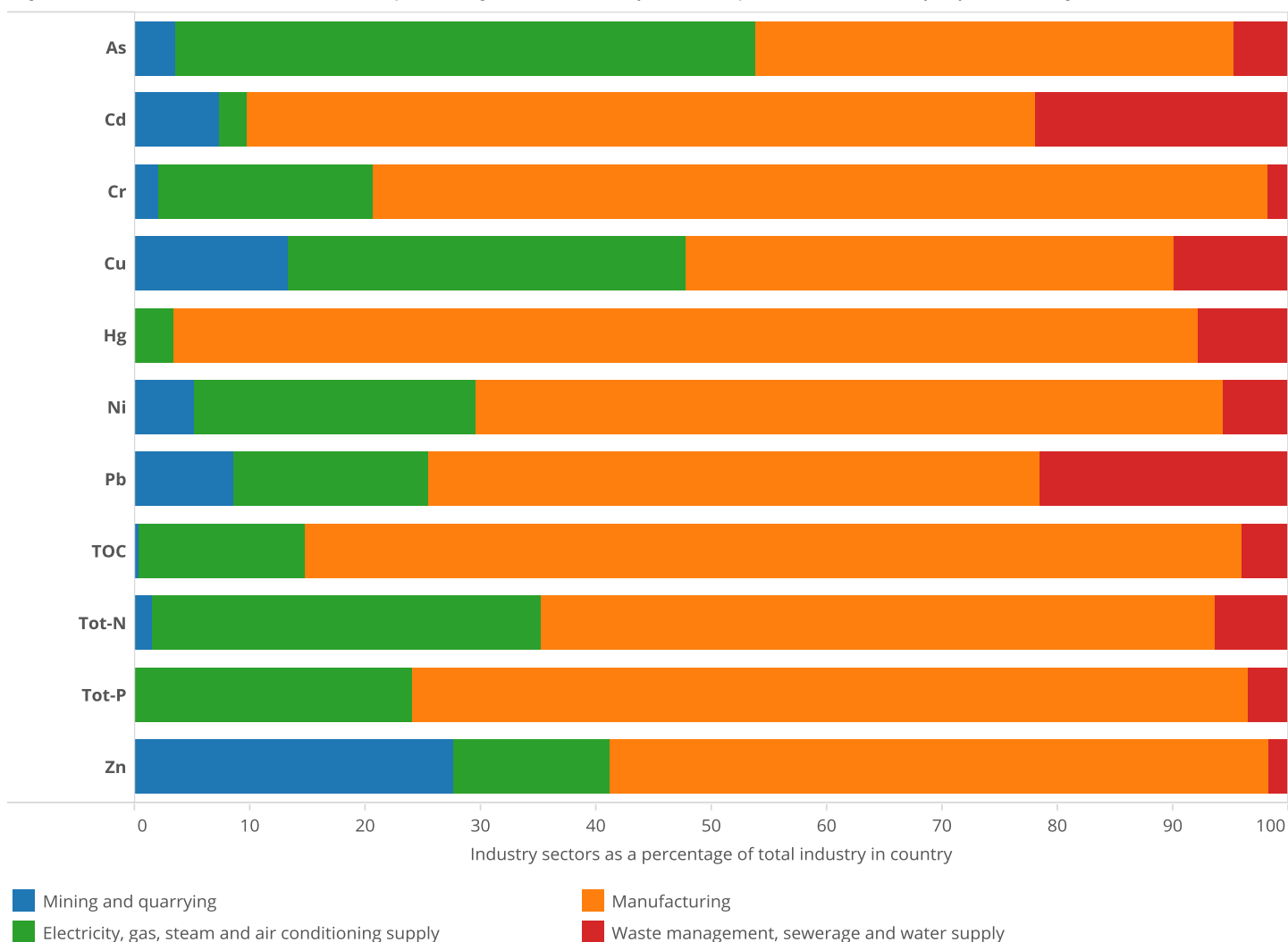
THE SIGNIFICANCE OF INDUSTRY IN TERMS OF RELEASES TO WATER

Industrial activities are an important source of water pollution. Industry releases pollutants that can be harmful to people and the environment. In this section, data are provided with regard to the release of the heavy metals arsenic (As), cadmium (Cd), chromium (Cr), copper (Cu), mercury (Hg), nickel (Ni), lead (Pb) and zinc (Zn); the nutrients nitrogen (Tot-N) and phosphorus (Tot-P); and total organic carbon (TOC).

The coloured sections of the bars represent the contribution of the different industrial sectors (grouped by NACE divisions) to the releases to water for each pollutant. The sector contributions, expressed as percentages, reflect the country's total industrial water releases for each pollutant, as reported to the E-PRTR. The main NACE activity reported by the facility to the E-PRTR has been used for the grouping of industrial sectors.

For water releases, there are no complete inventories that cover all human activities. That is why the data source used for water releases is the E-PRTR. This data set covers releases above only a certain threshold for selected industrial activities. Therefore, the graph in Figure 10 captures a subset of industrial reality. In the E-PRTR, data on heavy metals include data on compounds of heavy metals.

Figure 10. Industrial water releases as a percentage of total country E-PRTR pollution in Germany, by sector origins, in 2014



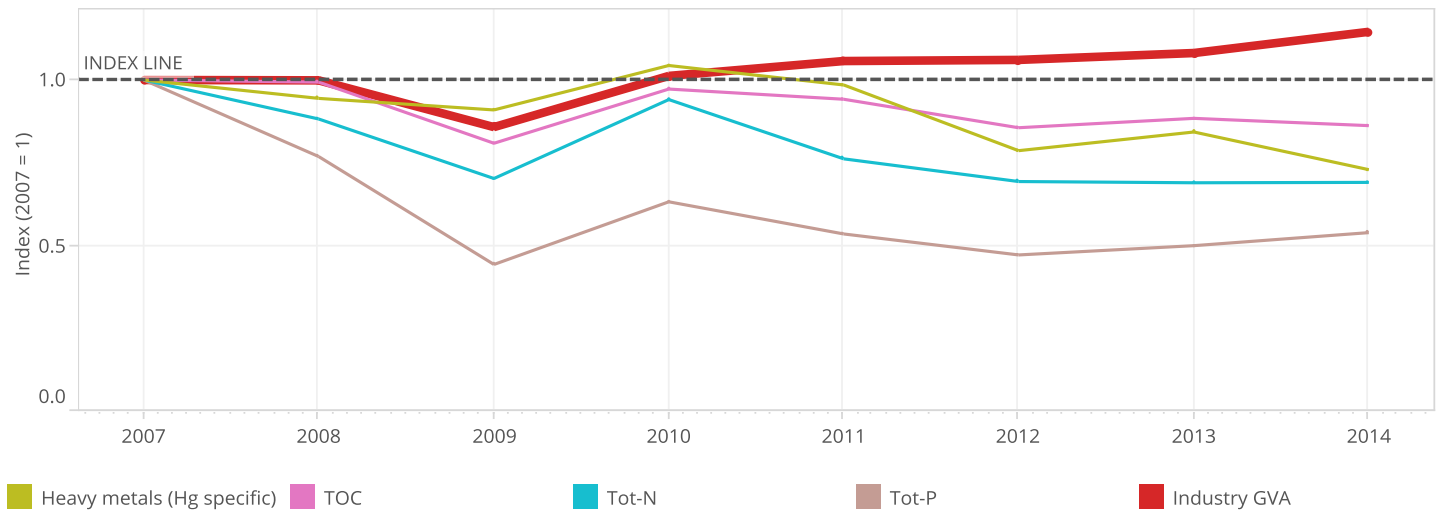
Source: EEA, 2016b.

Releases (tonnes)	As	Cd	Cr	Cu	Hg	Ni	Pb	TOC	Tot-N	Tot-P	Zn
Electricity, gas, steam and air conditioning supply	1.02	0.01	2.03	4.58	0.00	2.20	0.47	3 454.30	1 976.00	59.70	12.78
Manufacturing	0.84	0.17	8.42	5.62	0.07	5.85	1.48	19 441.90	3 438.60	179.92	53.83
Mining and quarrying	0.07	0.02	0.22	1.77	-	0.47	0.24	86.60	86.90	-	26.13
Waste management, sewerage and water supply	0.09	0.06	0.19	1.30	0.01	0.51	0.60	961.00	369.30	8.46	1.54

TRENDS FOR KEY WATER POLLUTANT RELEASES

This section presents indexed data on releases (annual loads) and growth (GVA) to show the possible decoupling of the economy from environmental pressures. An explanation of this decoupling concept is given in the section 'Trends for key air pollutant releases' (page 9).

Figure 11. Industrial water pollution (based on E-PRTR data) versus economic growth in Germany, 2007-2014

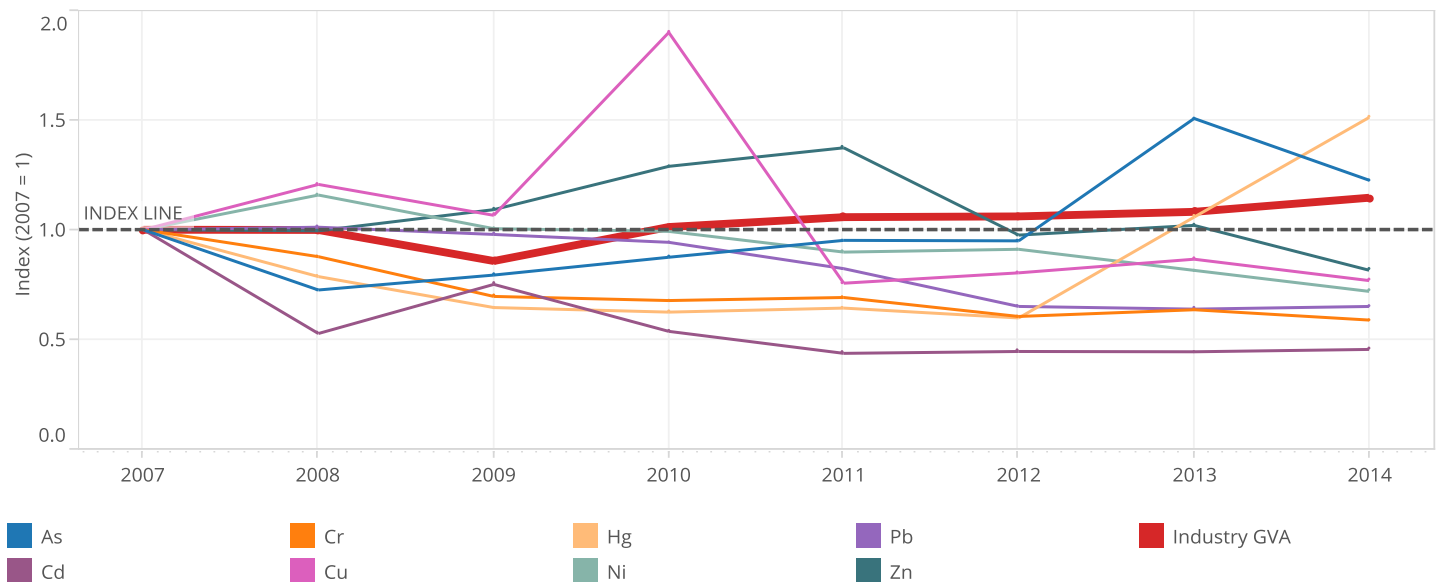


Source: EEA, 2016b.

Note: As heavy metals in water pose comparable pressures to the environment, they can be aggregated by their relative toxicity. The methodology document includes details on this aggregation. The heavy metal releases are weighted by factors corresponding to the reciprocal predicted no effect concentration (PNEC) values (i.e. 1/PNEC values) (OSPAR, 2014) for each pollutant and set equivalent to one of the metals; in this case, Hg was chosen.

Releases (tonnes)	2007	2008	2009	2010	2011	2012	2013	2014
Heavy metals (Hg specific)	4.14	3.91	3.76	4.32	4.08	3.25	3.49	3.02
TOC	27 786.60	27 607.60	22 461.40	27 022.80	26 164.90	23 768.20	24 556.90	23 943.80
Tot-N	8 510.20	7 505.00	5 970.90	8 005.00	6 477.90	5 892.70	5 860.90	5 870.80
Tot-P	461.39	354.44	203.58	291.15	246.24	216.91	229.87	248.08

Figure 12. Industrial water pollution (based on E-PRTR data), from heavy metals, versus economic growth in Germany, 2007-2014



Source: EEA, 2016b.

Releases (kg)	2007	2008	2009	2010	2011	2012	2013	2014
As	1 649	1 196	1 308	1 442	1 569	1 565	2 486	2 022
Cd	563	296	422	302	245	250	249	255
Cr	18 483	16 211	12 858	12 511	12 768	11 168	11 736	10 865
Cu	17 279	20 850	18 413	32 825	13 062	13 879	14 954	13 270
Hg	51	40	33	32	32	30	53	76
Ni	12 576	14 566	12 635	12 480	11 292	11 454	10 244	9 038
Pb	4 294	4 343	4 202	4 047	3 532	2 791	2 739	2 791
Zn	115 663	115 087	126 264	149 101	158 888	112 830	117 953	94 282

Industrial waste generation

THE SIGNIFICANCE OF INDUSTRY IN TERMS OF THE GENERATION OF WASTE

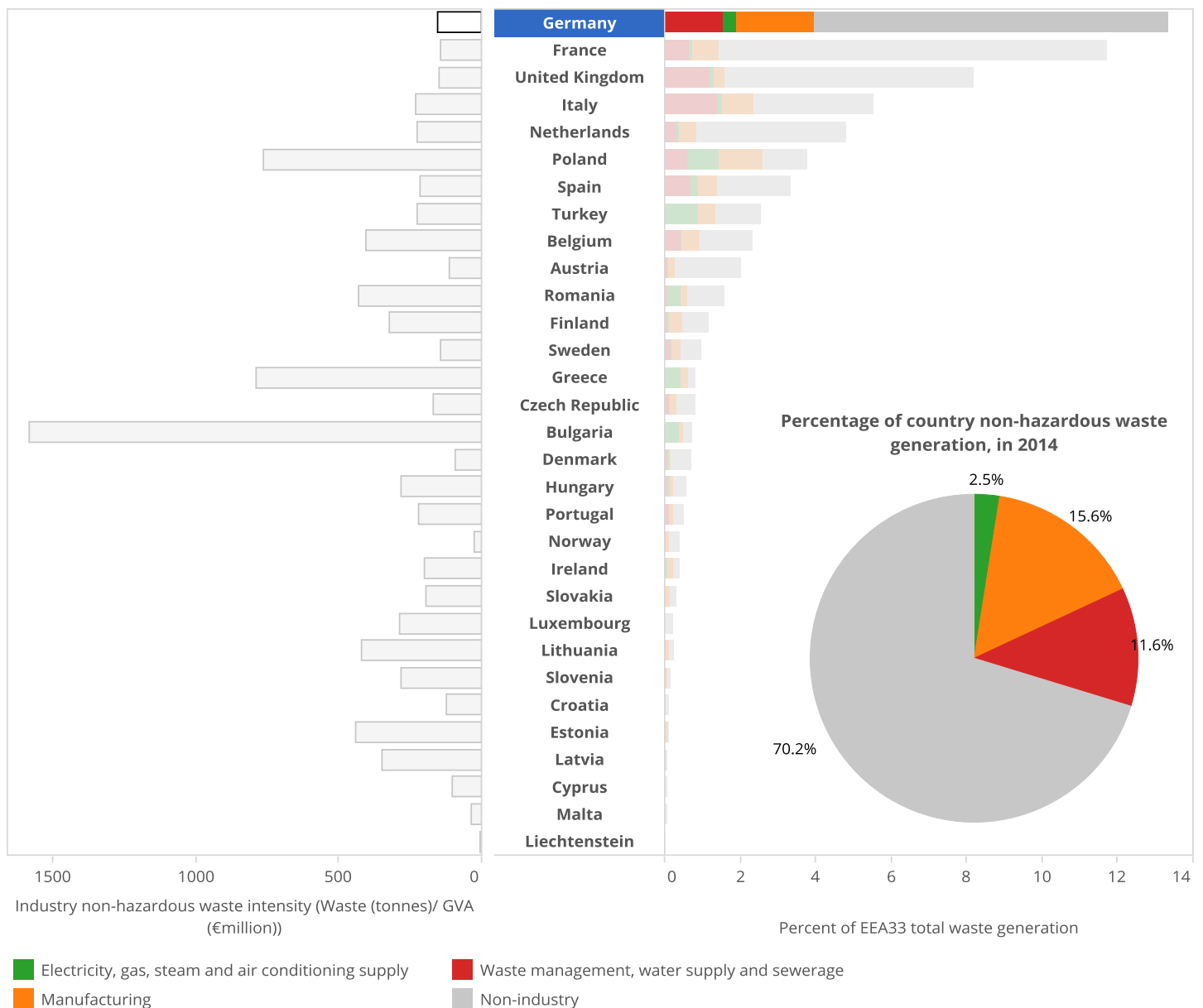
The waste produced by industrial activities comes from chemical solvents, paints, paper products, industrial by-products and metals among others. In the following analysis, data on industrial waste are grouped into three types: hazardous waste, non-hazardous waste, and waste from mining and quarrying. Mining and quarrying waste covers both hazardous and non-hazardous waste from these activities. Waste generation data are grouped by NACE divisions.

Hazardous waste can pose a risk to human health or the environment if not managed and disposed of correctly. The properties of waste that render it hazardous are defined in Annex III of the Waste Framework Directive (EC, 2008) and include, among others, explosive, flammable, toxic and carcinogenic properties. Data on waste from mining and quarrying are presented separately because of the different nature and large volumes of this type of waste. Mining and quarrying waste results from the prospecting, extraction, treatment and storage of mineral resources and the working of quarries. This category of waste is also addressed by a separate directive on the management of waste from extractive industries (EC, 2006).

The following figures on waste generation show (1) waste intensity (i.e. the relationship between waste generation (tonnes) and industry GVA (million EUR)); (2) the proportion of waste generated by the different activities out of the total waste generated by the EEA33; and (3) the proportion of country waste generation totals. Total waste covers all economic sectors.

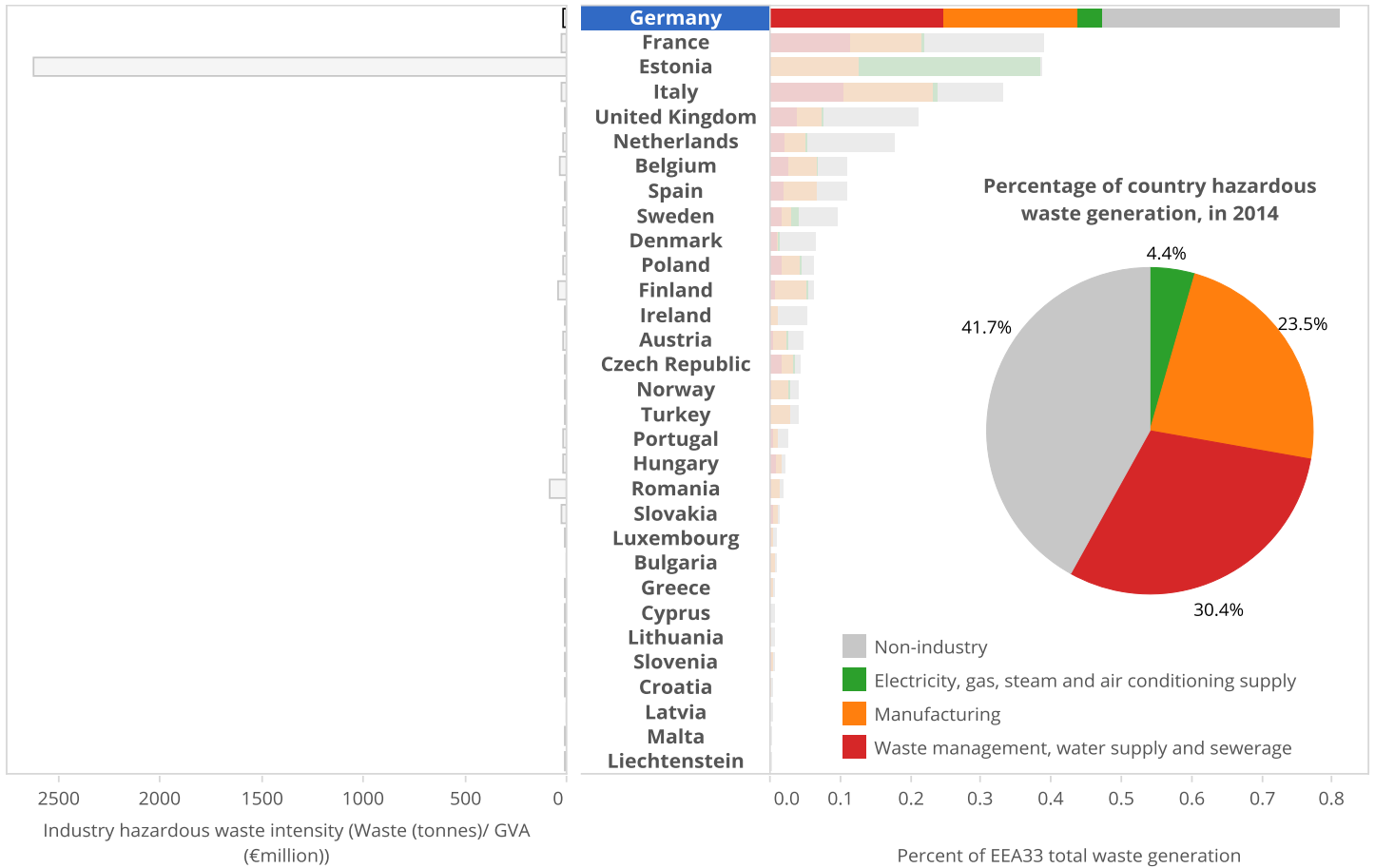
Waste intensity values quantify the relationship between waste generation and economic output. The larger the value, the more waste is generated by that country relative to the GVA that the particular sector produces in that country.

Figure 13. Industrial non-hazardous waste generation (excluding mining and quarrying), as a percentage of total EEA33 waste, and waste intensity, in 2014



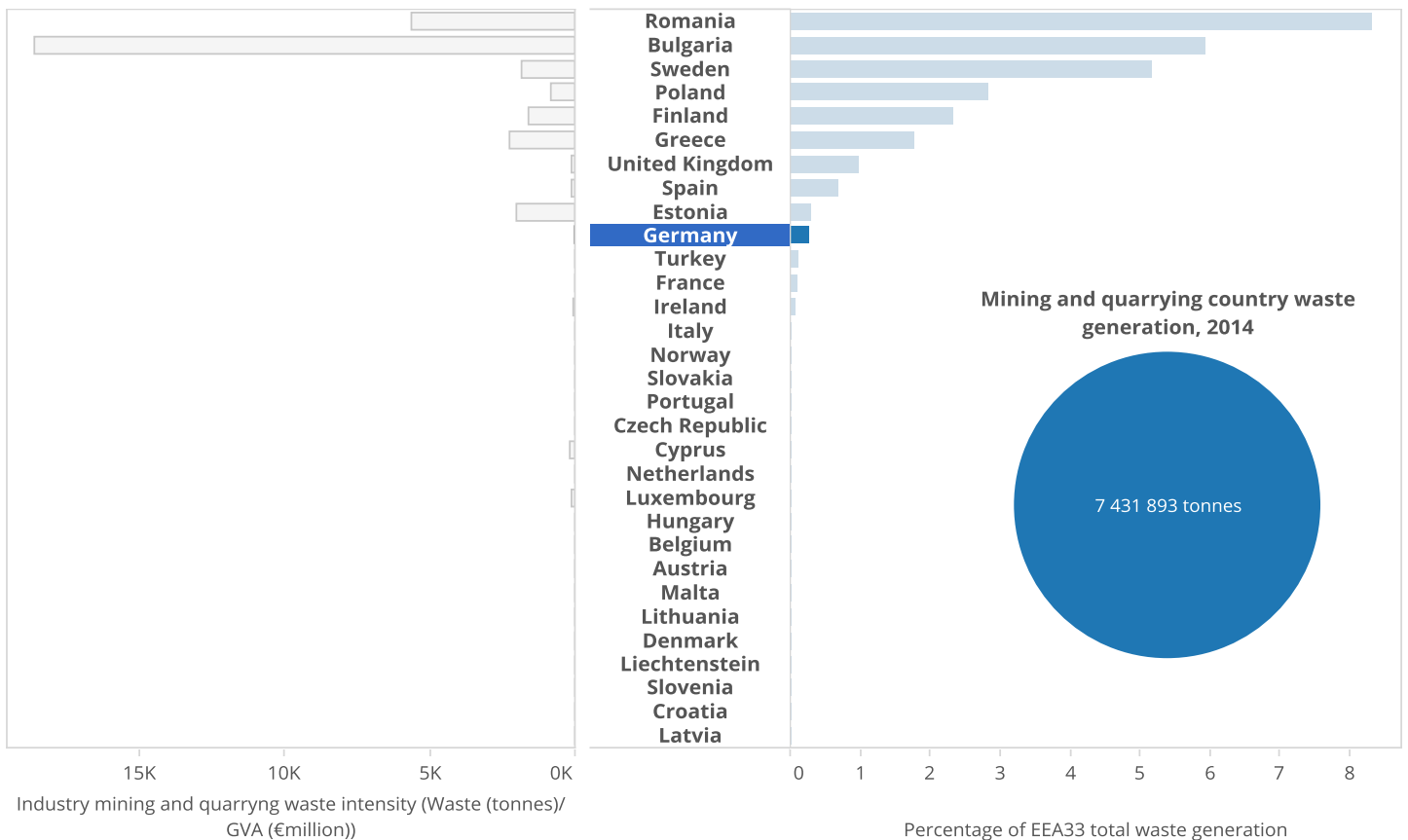
Source: Eurostat, 2016d. No data were available for Iceland or Switzerland.

Figure 14. Industrial hazardous waste generation (excluding mining and quarrying), as a percentage of total EEA33 waste, and waste intensity, 2014



Source: Eurostat, 2016d. No data were available for Iceland or Switzerland.

Figure 15. Mining and quarrying waste generation, as a percentage of total EEA33 waste, and waste intensity, 2014

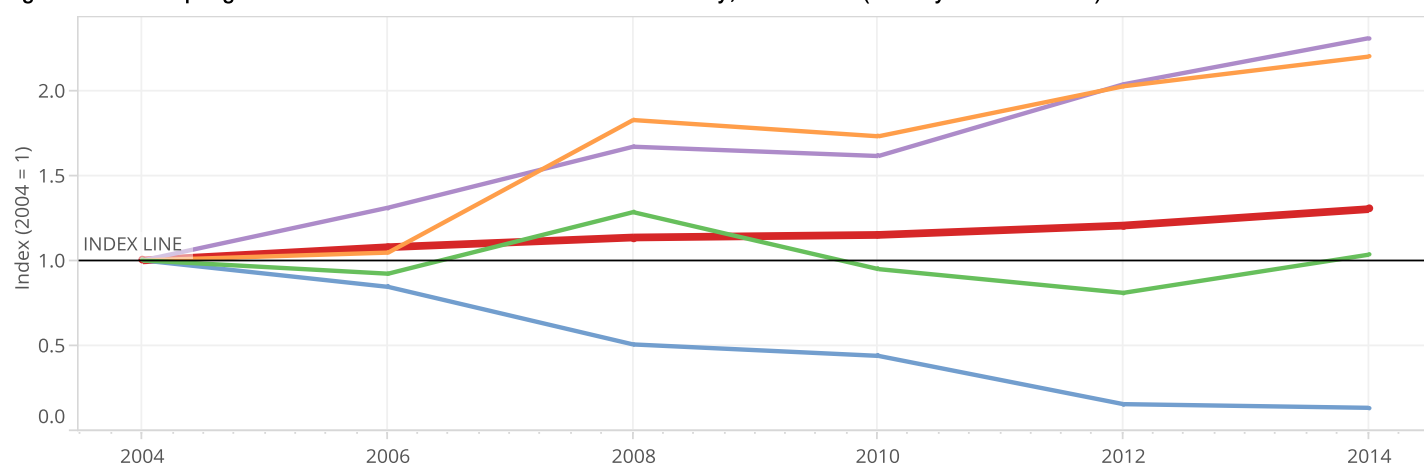


Source: Eurostat, 2016d. No data were available for Iceland or Switzerland.

WASTE GENERATION TRENDS

This section presents indexed data on waste generation. The data have been broken down by sector and growth (GVA) to show the possible coupling or decoupling of the economy and environmental pressures. An explanation of this concept is given in the 'Trends for key air pollutant releases' section (page 9). In this case, the data were indexed to 2004 levels.

Figure 16. Decoupling of industrial non-hazardous waste in Germany, 2004-2014 (latest years available)



Source: Eurostat, 2016d.

Waste (tonnes)	2004	2006	2008	2010	2012	2014
Electricity, gas, steam and air conditioning supply	8 715 401	8 032 461	11 190 436	8 267 839	7 050 005	9 007 430
Manufacturing	25 446 424	26 613 361	46 467 424	44 029 722	51 523 601	55 967 593
Mining and quarrying	55 868 371	47 156 912	28 226 812	24 465 432	8 590 225	7 382 353
Waste management	18 065 952	23 670 910	30 153 077	29 163 174	36 787 986	41 694 976

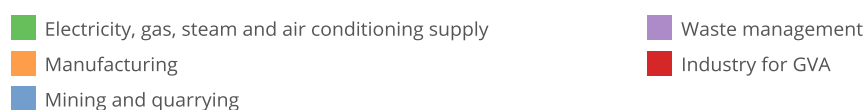
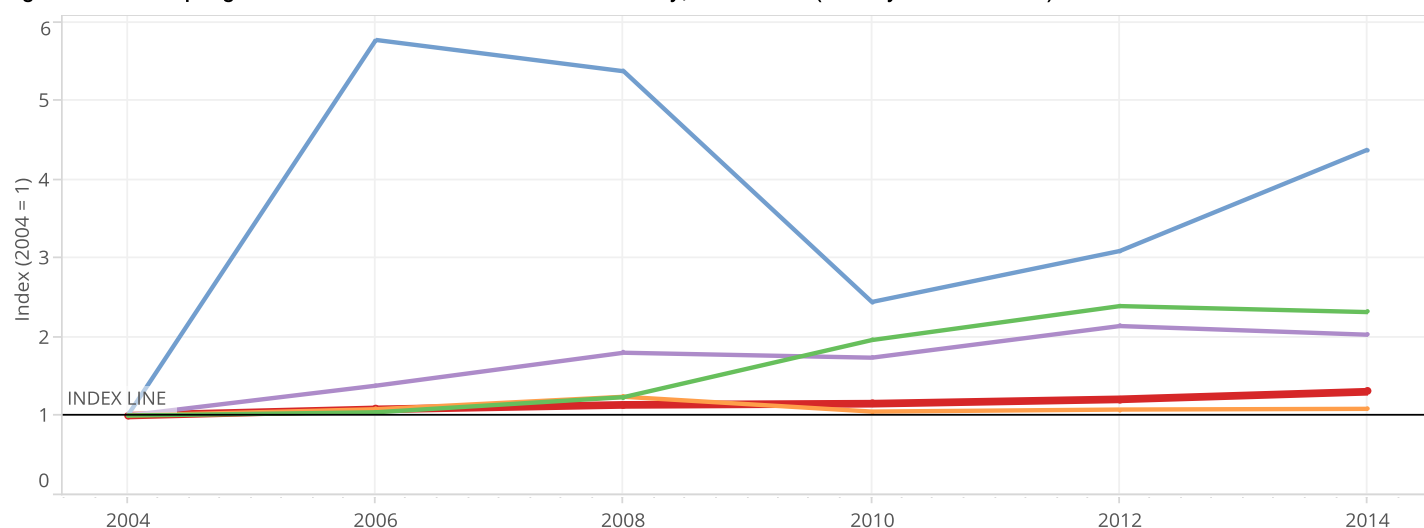


Figure 17. Decoupling of industrial hazardous waste in Germany, 2004-2014 (latest years available)



Source: Eurostat, 2016d.

Waste (tonnes)	2004	2006	2008	2010	2012	2014
Electricity, gas, steam and air conditioning supply	418 681	435 836	516 245	819 399	999 682	967 770
Manufacturing	4 716 339	5 091 836	5 836 900	4 951 318	5 072 030	5 115 654
Mining and quarrying	11 328	65 288	60 788	27 641	34 962	49 540
Waste management	3 264 398	4 499 038	5 863 553	5 658 579	6 968 133	6 608 067

References

EC, 2006, Directive 2006/21/EC of the European Parliament and of the Council of 15 March 2006 on the management of waste from extractive industries and amending Directive 2004/35/EC (<https://goo.gl/B5PLdl>) accessed 24 November 2016.

EC, 2008, Directive 2008/98/EC of the European Parliament and of the Council of 19 November 2008 on waste and repealing certain Directives (<https://goo.gl/E7nqg5>) accessed 24 November 2016.

EEA, 2016a, 'National emissions reported to the Convention on Long-range Transboundary Air Pollution (LRTAP Convention)', European Environment Agency (<https://goo.gl/PZg2Rv>) accessed 22 November 2016.

EEA, 2016b, 'The European Pollutant Release and Transfer Register (E-PRTR), Member States reporting under Article 7 of Regulation (EC) No 166/2006', European Environment Agency (<https://goo.gl/pz4tTE>) accessed 22 November 2016.

Eurostat, 2016a, 'National Accounts aggregates by industry (up to NACE a*64)' (<https://goo.gl/pz4oML>) accessed 22 November 2016.

Eurostat, 2016b, 'Complete energy balances - annual data' (<https://goo.gl/GDtvAZ>) accessed 22 November 2016.

Eurostat, 2016c, 'Water use by supply category and economical sector' (<https://goo.gl/oOixj2>) accessed 22 November 2016.

Eurostat, 2016d, 'Generation of waste' (<https://goo.gl/MAHg3i>) accessed 22 November 2016.

OSPAR, 2014, *Establishment of a list of predicted no effect concentrations (PNECs) for naturally occurring substances in produced water (OSPAR Agreement 2014-05)*, OSPAR Commission (<https://goo.gl/fOsShN>) accessed 24 November 2015.

Units, abbreviations and acronyms

As	Arsenic
Cd	Cadmium
CLRTAP	Convention on Long-range Transboundary Air Pollution
Cr	Chromium
Cu	Copper
EEA	European Environment Agency
EEA33	The 33 European Environment Agency member countries (the 28 European Union Member States together with Iceland, Liechtenstein, Norway, Switzerland and Turkey)
E-PRTR	European Pollutant Release and Transfer Register
GVA	Gross value added
Hg	Mercury
Mm ³	Million cubic metres
NACE	Statistical classification of economic activities in the European Community
NFR	Nomenclature for Reporting
NH ₃	Ammonia
Ni	Nickel
NMVOC	Non-methane volatile organic compound
NO ₂	Nitrogen dioxide
NO _x	Nitrogen oxides
Pb	Lead
PJ	Petajoules
PM ₁₀	Particulate matter
PNEC	Predicted no effect concentration
SO ₂	Sulfur dioxide
SO _x	Sulfur oxides
TOC	Total organic carbon
Tot-N	Total nitrogen
Tot-P	Total phosphorous
Zn	Zinc