

Noise in Europe

2015 overview of policy-related data



Norway 

April 2016



The Environmental Noise Directive (END) requires EU Member States to assess exposure to noise from key transport and industrial sources with two initial reporting phases: 2007 and 2012. Where the recommended thresholds for day and night indicators are exceeded, action plans are to be implemented. This country fact sheet presents key statistics related to END assessments as reported to EEA by 30th June 2015 for the two key END indicators: L_{den} (day evening and night exposure) and L_{night} (night time exposure). Where possible this is presented for second round assessments reported in 2012. Trends are presented as the change in exposure from 2007 to 2012, for comparable sources only.




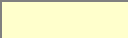

NORWAY

Noise sources covered by this assessment		Trends on noise exposure 2007 - 2012																																																												
	END noise sources	<p>Trends on noise exposure show, for both implementation rounds:</p> <ul style="list-style-type: none"> - For agglomerations: the relative value of people exposed to more than 55 dB L_{den} and to more than 50 dB L_{night} due to different noise sources (values are expressed in %). - For major airports: total number of people exposed to more than 55 dB L_{den} and to more than 50 dB L_{night} (values are expressed in real numbers). <p>Major airports:</p> <table border="1"> <thead> <tr> <th rowspan="2"></th> <th colspan="2">L_{den}</th> <th colspan="2">L_{night}</th> </tr> <tr> <th>First round</th> <th>Second round</th> <th>First round</th> <th>Second round</th> </tr> </thead> <tbody> <tr> <td>Bergen/Flesland Airport</td> <td>3000</td> <td>500</td> <td>800</td> <td>0</td> </tr> <tr> <td>Stavanger/ Sola Airport</td> <td>3200</td> <td>200</td> <td>600</td> <td>0</td> </tr> <tr> <td>Oslo/Gardermoen Airport</td> <td>0</td> <td>2200</td> <td>0</td> <td>800</td> </tr> <tr> <td>Trondheim/Værnes Airport</td> <td>700</td> <td>1900</td> <td>400</td> <td>600</td> </tr> </tbody> </table> <p>Agglomerations:</p> <table border="1"> <thead> <tr> <th rowspan="2">Airports (values in %)</th> <th colspan="2">L_{den}</th> <th colspan="2">L_{night}</th> </tr> <tr> <th>First round</th> <th>Second round</th> <th>First round</th> <th>Second round</th> </tr> </thead> <tbody> <tr> <td>Oslo</td> <td>N/D</td> <td>N/D</td> <td>N/D</td> <td>N/D</td> </tr> </tbody> </table> <table border="1"> <thead> <tr> <th rowspan="2">Industry (values in %)</th> <th colspan="2">L_{den}</th> <th colspan="2">L_{night}</th> </tr> <tr> <th>First round</th> <th>Second round</th> <th>First round</th> <th>Second round</th> </tr> </thead> <tbody> <tr> <td>Oslo</td> <td>0</td> <td>0</td> <td>0</td> <td>0</td> </tr> </tbody> </table>					L_{den}		L_{night}		First round	Second round	First round	Second round	Bergen/Flesland Airport	3000	500	800	0	Stavanger/ Sola Airport	3200	200	600	0	Oslo/Gardermoen Airport	0	2200	0	800	Trondheim/Værnes Airport	700	1900	400	600	Airports (values in %)	L_{den}		L_{night}		First round	Second round	First round	Second round	Oslo	N/D	N/D	N/D	N/D	Industry (values in %)	L_{den}		L_{night}		First round	Second round	First round	Second round	Oslo	0	0	0	0
	L_{den}						L_{night}																																																							
	First round					Second round	First round	Second round																																																						
Bergen/Flesland Airport	3000					500	800	0																																																						
Stavanger/ Sola Airport	3200					200	600	0																																																						
Oslo/Gardermoen Airport	0					2200	0	800																																																						
Trondheim/Værnes Airport	700	1900	400	600																																																										
Airports (values in %)	L_{den}		L_{night}																																																											
	First round	Second round	First round	Second round																																																										
Oslo	N/D	N/D	N/D	N/D																																																										
Industry (values in %)	L_{den}		L_{night}																																																											
	First round	Second round	First round	Second round																																																										
Oslo	0	0	0	0																																																										
Number of agglomerations	5																																																													
Major roads	2487 km																																																													
Major railways	208 km																																																													
Number of major airports	4																																																													
Name of major airports	Bergen/Flesland Airport Oslo/Gardermoen Airport Stavanger/ Sola Airport Trondheim/Værnes Airport																																																													
Name of agglomerations and number of inhabitants	Bergen 263732 Fredrikstad 129317 Oslo and adjacent agglomerations 906318 Stavanger 230166 Trondheim 176348																																																													

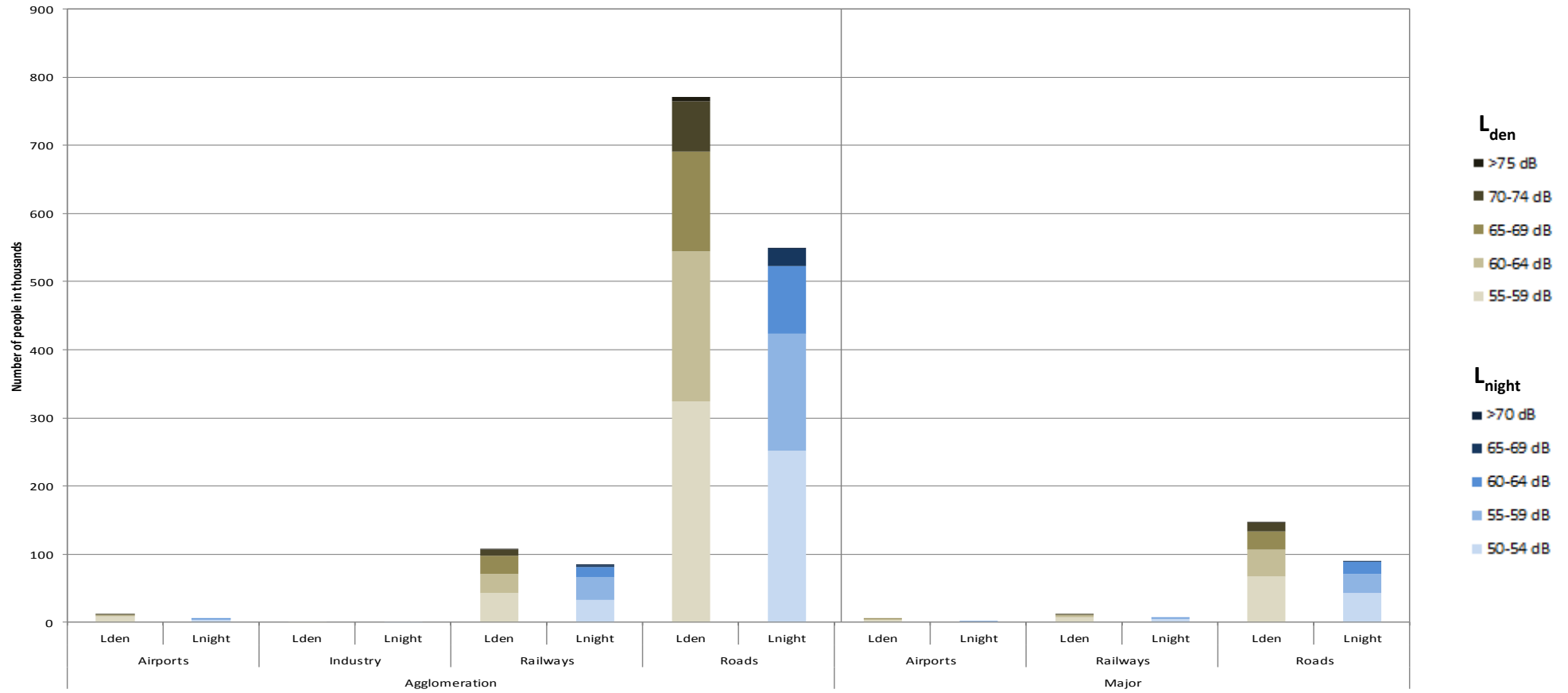
Railways (values in %)	L _{den}		L _{night}	
	First round	Second round	First round	Second round
Oslo	10	10	8	8

Roads (values in %)	L _{den}		L _{night}	
	First round	Second round	First round	Second round
Oslo	66	54	46	40

N/D: Data not provided or unsuitable for deriving trends (e.g. data reported for only one round)

	Decrease in population exposed
	No change
	Increase in population exposed

Number of people exposed to different noise bands per L_{den} and L_{night} (2012)



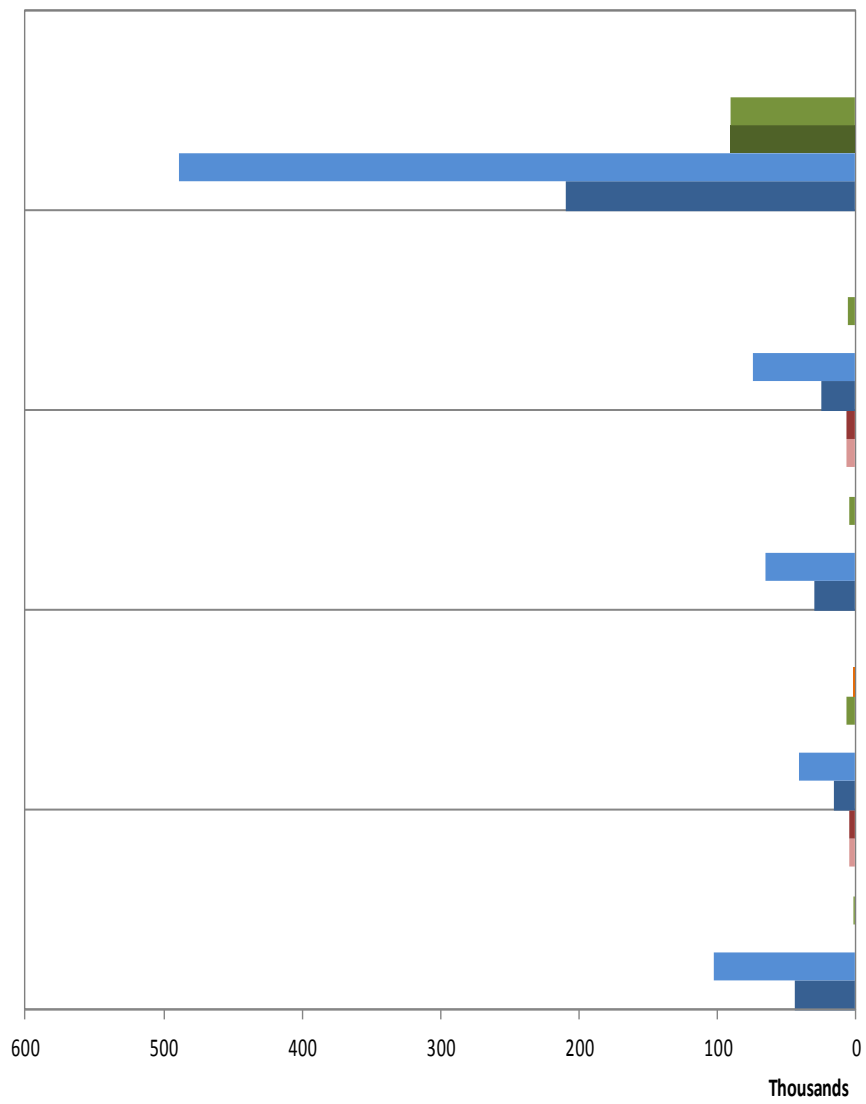
Data not applicable for airport noise in 3 agglomerations.

Data relating to END mandatory noise contour maps (2012)

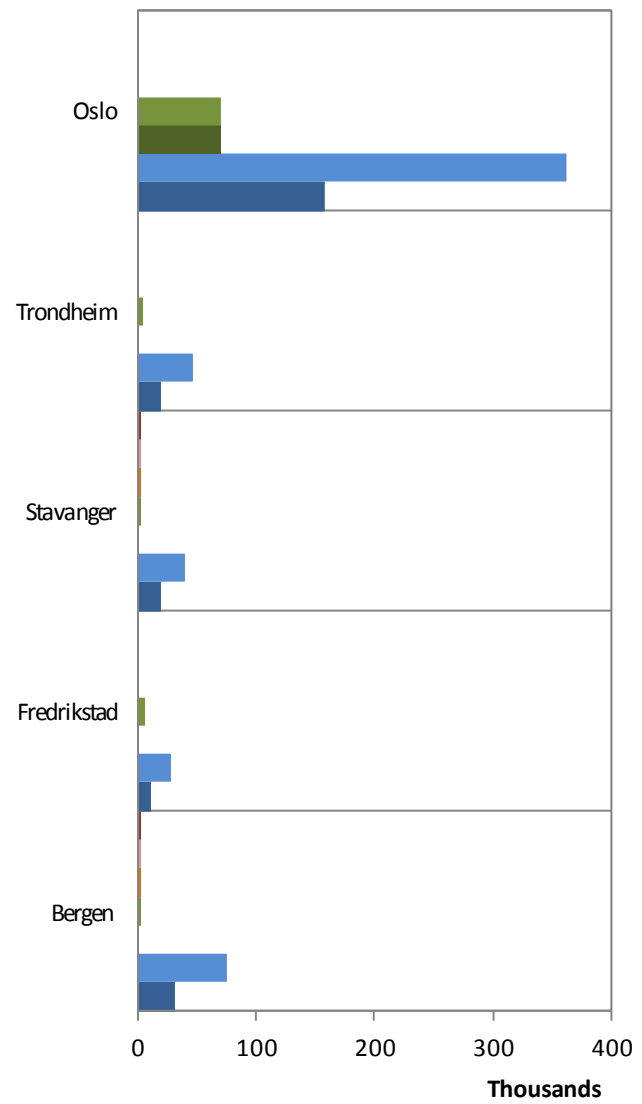
	Major roads	Major railways	Major airports
Country area (km ²)	320884.44	320884.44	320884.44
Km of noise sources	2233.00	208.00	N/A
Area of contour map in the 55-65 dB L _{den} band (in km ²)	341.69	37.72	1.50
Share of area of contour map in the 55-65 dB L _{den} band per km of noise source reported	0.15	0.18	N/D
Percentage of the country area occupied by contour maps in the 55-65 dB L _{den} band (in %)	0.11	0.01	0.00
Area of contour map with more than 65 dB L _{den} (in km ²)	67.01	6.30	0.32
Share of area of contour map with more than 65 dB L _{den} per km of noise source reported	0.03	0.03	N/D
Percentage of the country area occupied by contour maps with more than 65 dB L _{den} (in %)	0.02	0.00	0.00

*N/A: Not applicable. N/D: No data in suitable format to perform the spatial analysis

Total number of people exposed to noise inside agglomerations (2012)



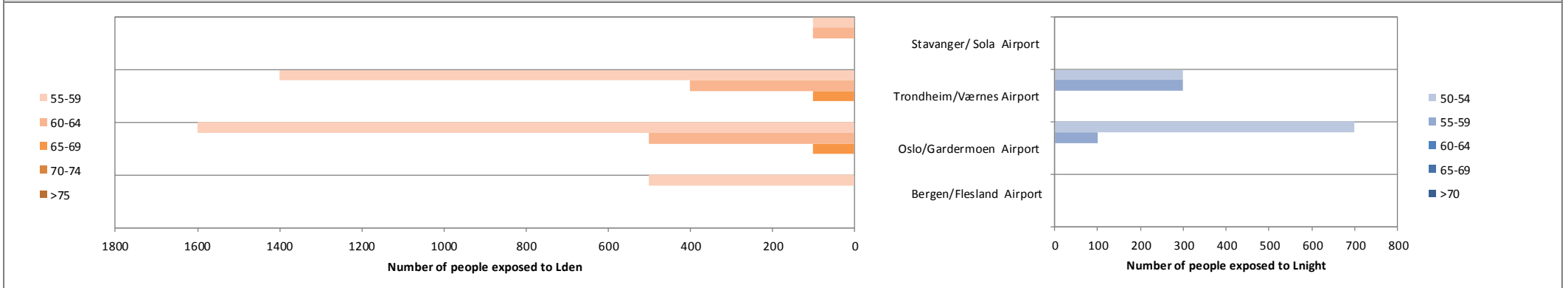
Number of people exposed to Lden > 55 dB



Number of people exposed to Lnight > 50 dB

- Major Airports
- Airports
- Industry
- Railways
- Major Railways
- Roads
- Major Roads

Total number of people exposed to noise from major airports outside agglomerations (2012)



For further information please consult the full Noise in Europe report at www.eea.europa.eu/themes/noise or visit the Noise Observation & Information Service for Europe at <http://noise.eionet.europa.eu/>.