

Noise in Europe

2015 overview of policy-related data



Bulgaria 

April 2016



The Environmental Noise Directive (END) requires EU Member States to assess exposure to noise from key transport and industrial sources with two initial reporting phases: 2007 and 2012. Where the recommended thresholds for day and night indicators are exceeded, action plans are to be implemented. This country fact sheet presents key statistics related to END assessments as reported to EEA by 30th June 2015 for the two key END indicators: L_{den} (day evening and night exposure) and L_{night} (night time exposure). Where possible this is presented for second round assessments reported in 2012. Trends are presented as the change in exposure from 2007 to 2012, for comparable sources only.



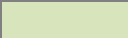
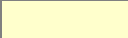

BULGARIA

Noise sources covered by this assessment		Trends on noise exposure 2007 - 2012																																																																	
	END noise sources	<p>Trends on noise exposure show, for both implementation rounds:</p> <ul style="list-style-type: none"> - For agglomerations: the relative value of people exposed to more than 55 dB L_{den} and to more than 50 dB L_{night} due to different noise sources (values are expressed in %). - For major airports: total number of people exposed to more than 55 dB L_{den} and to more than 50 dB L_{night} (values are expressed in real numbers). <p>Major airports:</p> <table border="1"> <thead> <tr> <th rowspan="2"></th> <th colspan="2">L_{den}</th> <th colspan="2">L_{night}</th> </tr> <tr> <th>First round</th> <th>Second round</th> <th>First round</th> <th>Second round</th> </tr> </thead> <tbody> <tr> <td>No major airports > 50 000 mov/year</td> <td>N/D</td> <td>N/D</td> <td>N/D</td> <td>N/D</td> </tr> </tbody> </table> <p>Agglomerations:</p> <table border="1"> <thead> <tr> <th rowspan="2">Airports (values in %)</th> <th colspan="2">L_{den}</th> <th colspan="2">L_{night}</th> </tr> <tr> <th>First round</th> <th>Second round</th> <th>First round</th> <th>Second round</th> </tr> </thead> <tbody> <tr> <td>Plovdiv</td> <td>0</td> <td>0</td> <td>0</td> <td>0</td> </tr> <tr> <td>Sofia</td> <td>0</td> <td>0</td> <td>0</td> <td>0</td> </tr> <tr> <td>Varna</td> <td>30.0</td> <td>32.8</td> <td>13.7</td> <td>15.0</td> </tr> </tbody> </table> <p>Industry</p> <table border="1"> <thead> <tr> <th rowspan="2">(values in %)</th> <th colspan="2">L_{den}</th> <th colspan="2">L_{night}</th> </tr> <tr> <th>First round</th> <th>Second round</th> <th>First round</th> <th>Second round</th> </tr> </thead> <tbody> <tr> <td>Plovdiv</td> <td>0</td> <td>0</td> <td>0</td> <td>0</td> </tr> <tr> <td>Sofia</td> <td>0</td> <td>0</td> <td>0</td> <td>0</td> </tr> <tr> <td>Varna</td> <td>0.77</td> <td>0.84</td> <td>0.49</td> <td>0.53</td> </tr> </tbody> </table>					L_{den}		L_{night}		First round	Second round	First round	Second round	No major airports > 50 000 mov/year	N/D	N/D	N/D	N/D	Airports (values in %)	L_{den}		L_{night}		First round	Second round	First round	Second round	Plovdiv	0	0	0	0	Sofia	0	0	0	0	Varna	30.0	32.8	13.7	15.0	(values in %)	L_{den}		L_{night}		First round	Second round	First round	Second round	Plovdiv	0	0	0	0	Sofia	0	0	0	0	Varna	0.77	0.84	0.49	0.53
	L_{den}						L_{night}																																																												
	First round					Second round	First round	Second round																																																											
No major airports > 50 000 mov/year	N/D					N/D	N/D	N/D																																																											
Airports (values in %)	L_{den}					L_{night}																																																													
	First round					Second round	First round	Second round																																																											
Plovdiv	0					0	0	0																																																											
Sofia	0	0	0	0																																																															
Varna	30.0	32.8	13.7	15.0																																																															
(values in %)	L_{den}		L_{night}																																																																
	First round	Second round	First round	Second round																																																															
Plovdiv	0	0	0	0																																																															
Sofia	0	0	0	0																																																															
Varna	0.77	0.84	0.49	0.53																																																															
Number of agglomerations	7																																																																		
Major roads	1044 km																																																																		
Major railways	No railways > 30 000 trains/year																																																																		
Number of major airports	No major airports > 50 000 mov/year																																																																		
Name of major airports	No major airports > 50 000 mov/year																																																																		
Name of agglomerations and number of inhabitants	Burgas 230353 Pleven 140967 Plovdiv 341873 Ruse 157526 Sofia 1377531																																																																		

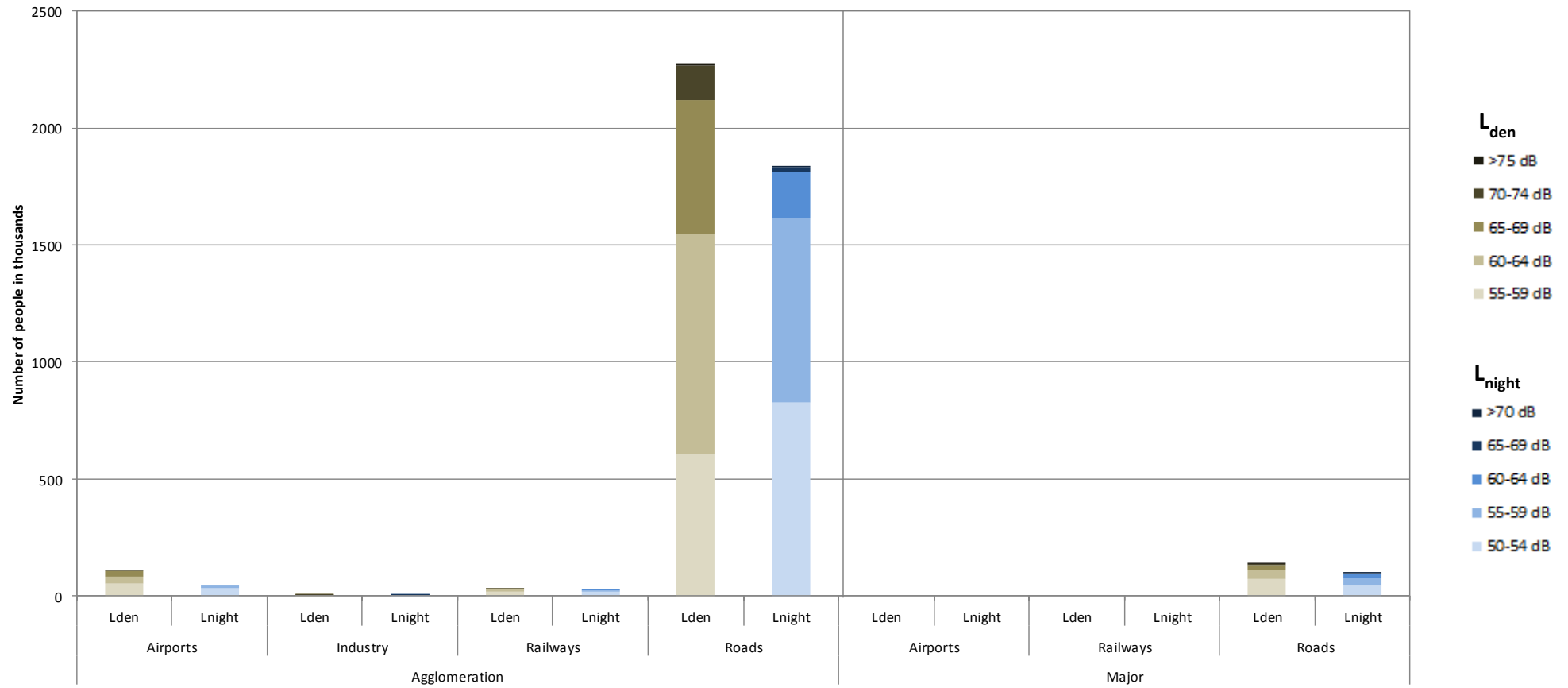
Railways (values in %)	L _{den}		L _{night}	
	First round	Second round	First round	Second round
Plovdiv	2.1	2.3	1.3	1.5
Sofia	1.1	1.1	1.2	1.2
Varna	0.7	0.8	0.4	0.4

Roads (values in %)	L _{den}		L _{night}	
	First round	Second round	First round	Second round
Plovdiv	92	101	73	81
Sofia	84	83	72	71
Varna	98	107	92	101

N/D: Data not provided or unsuitable for deriving trends (e.g. data reported for only one round)

	Decrease in population exposed
	No change
	Increase in population exposed

Number of people exposed to different noise bands per L_{den} and L_{night} (2012)



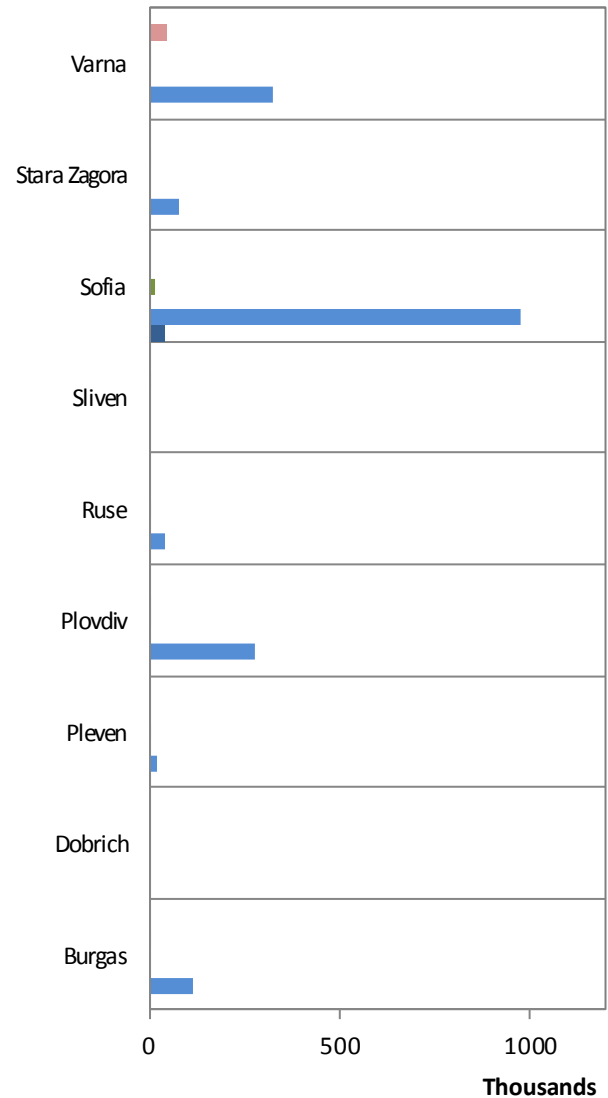
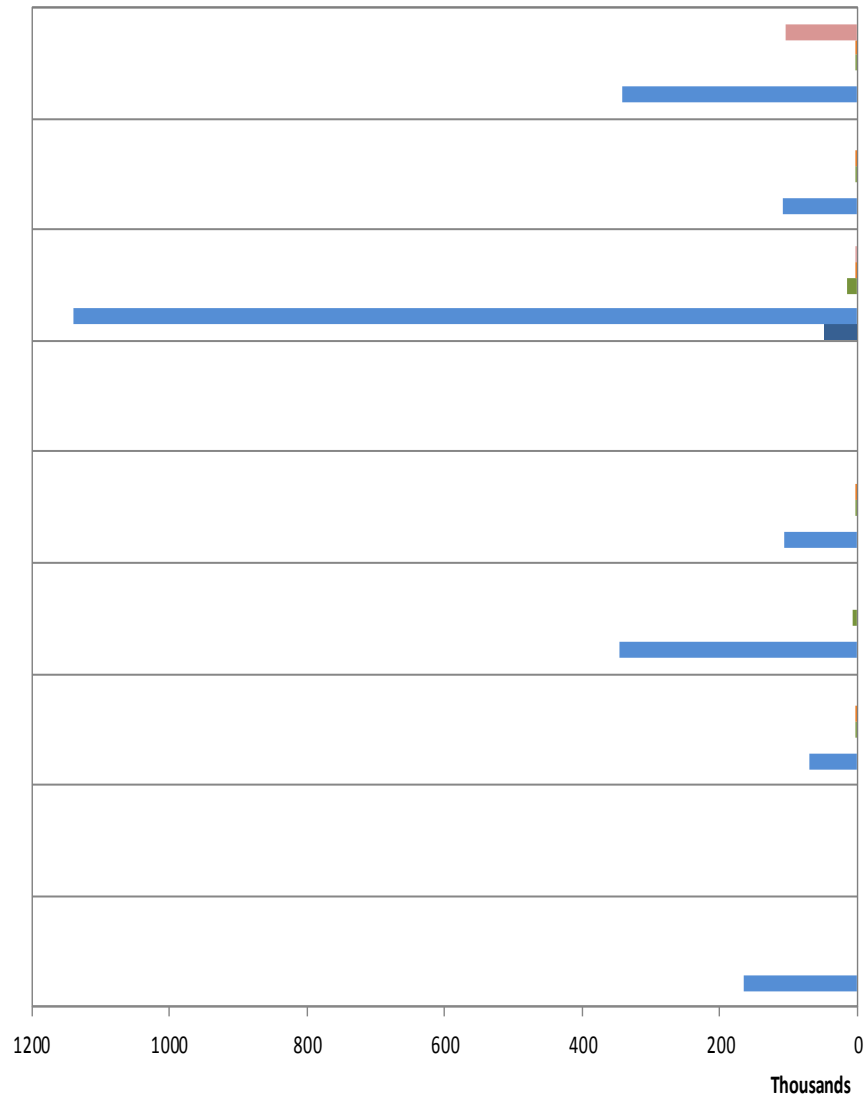
Data not applicable for airport noise in 3 agglomerations.
 No major airports > 50 000 movements / year (data not applicable).
 No major railways > 30 000 train passages / year (data not applicable).

Data relating to END mandatory noise contour maps (2012)

	Major roads	Major railways	Major airports
Country area (km ²)	111023.34	111023.34	111023.34
Km of noise sources	N/D	N/A	N/A
Area of contour map in the 55-65 dB L _{den} band (in km ²)	N/D	N/D	N/D
Share of area of contour map in the 55-65 dB L _{den} band per km of noise source reported	N/D	N/D	N/D
Percentage of the country area occupied by contour maps in the 55-65 dB L _{den} band (in %)	N/D	N/D	N/D
Area of contour map with more than 65 dB L _{den} (in km ²)	N/D	N/D	N/D
Share of area of contour map with more than 65 dB L _{den} per km of noise source reported	N/D	N/D	N/D
Percentage of the country area occupied by contour maps with more than 65 dB L _{den} (in %)	N/D	N/D	N/D

*N/A: Not applicable. N/D: No data in suitable format to perform the spatial analysis

Total number of people exposed to noise inside agglomerations (2012)



- Major Airports
- Airports
- Industry
- Railways
- Major Railways
- Roads
- Major Roads

Total number of people exposed to noise from major airports outside agglomerations (2012)

No Major Airports > 50 000 mov/year

For further information please consult the full Noise in Europe report at www.eea.europa.eu/themes/noise or visit the Noise Observation & Information Service for Europe at <http://noise.eionet.europa.eu/>.