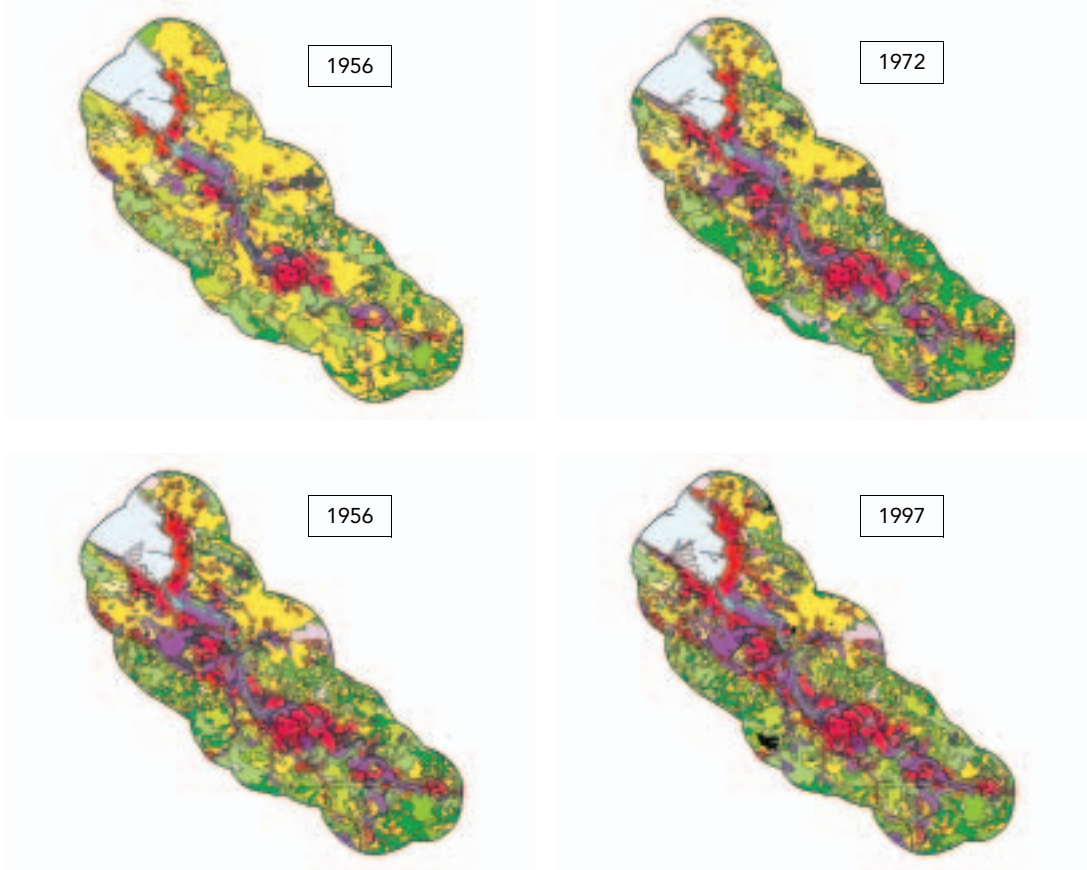


Annex 1: Samples from the Murbandy/ Moland database

Figure A.1.1 Bilbao



- Residential continuous dense urban fabric
- Residential discontinuous urban fabric
- Residential discontinuous sparse urban fabric
- Industrial areas
- Commercial areas
- Public and private services
- Toll ways
- Other roads
- Rail ways
- Port areas
- Airports
- Mineral extraction sites
- Dump sites
- Construction sites
- Abandoned land
- Green urban areas
- Sport and leisure facilities
- Non-irrigated arable land
- Vineyards
- Fruit trees and berry plantations
- Complex cultivation patterns
- Land principally occupied by agriculture, with significant areas of natural vegetation
- Agro-forestry areas
- Broad-leaved forest
- Coniferous forest
- Natural grassland
- Transitional woodland shrub
- Sparsely vegetated areas
- Canals
- Rivers
- Water bodies

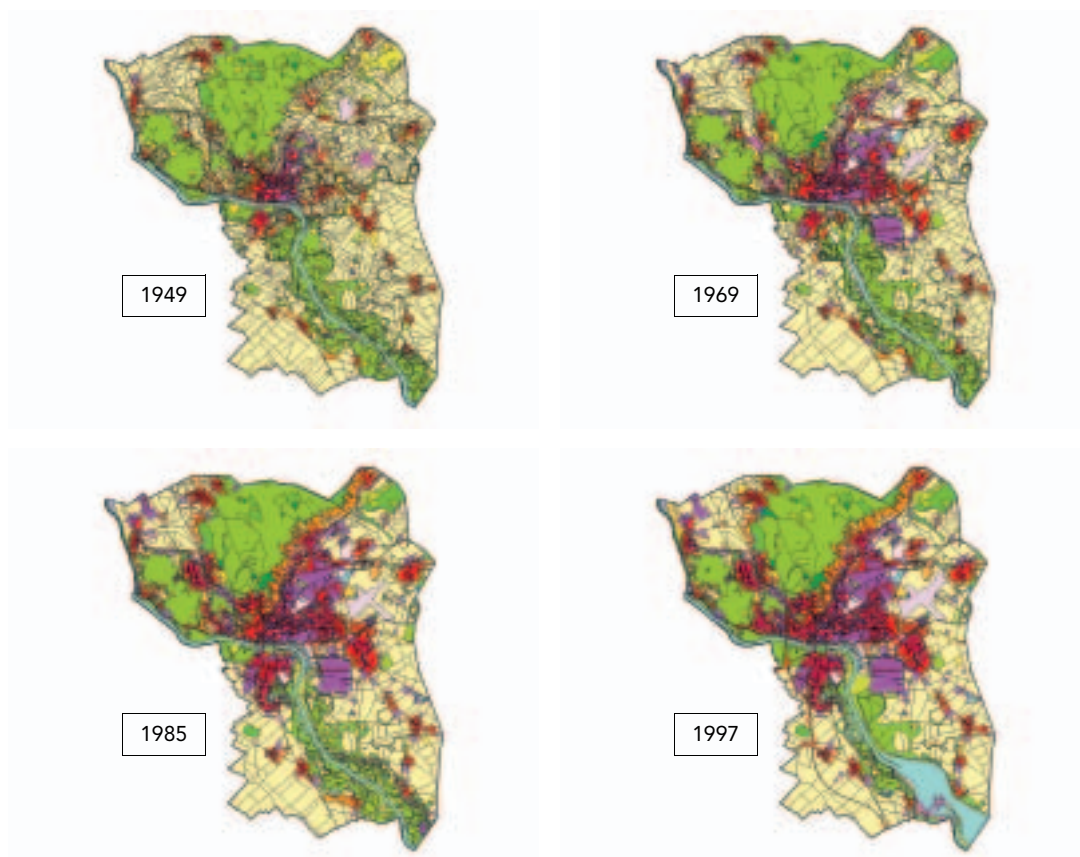
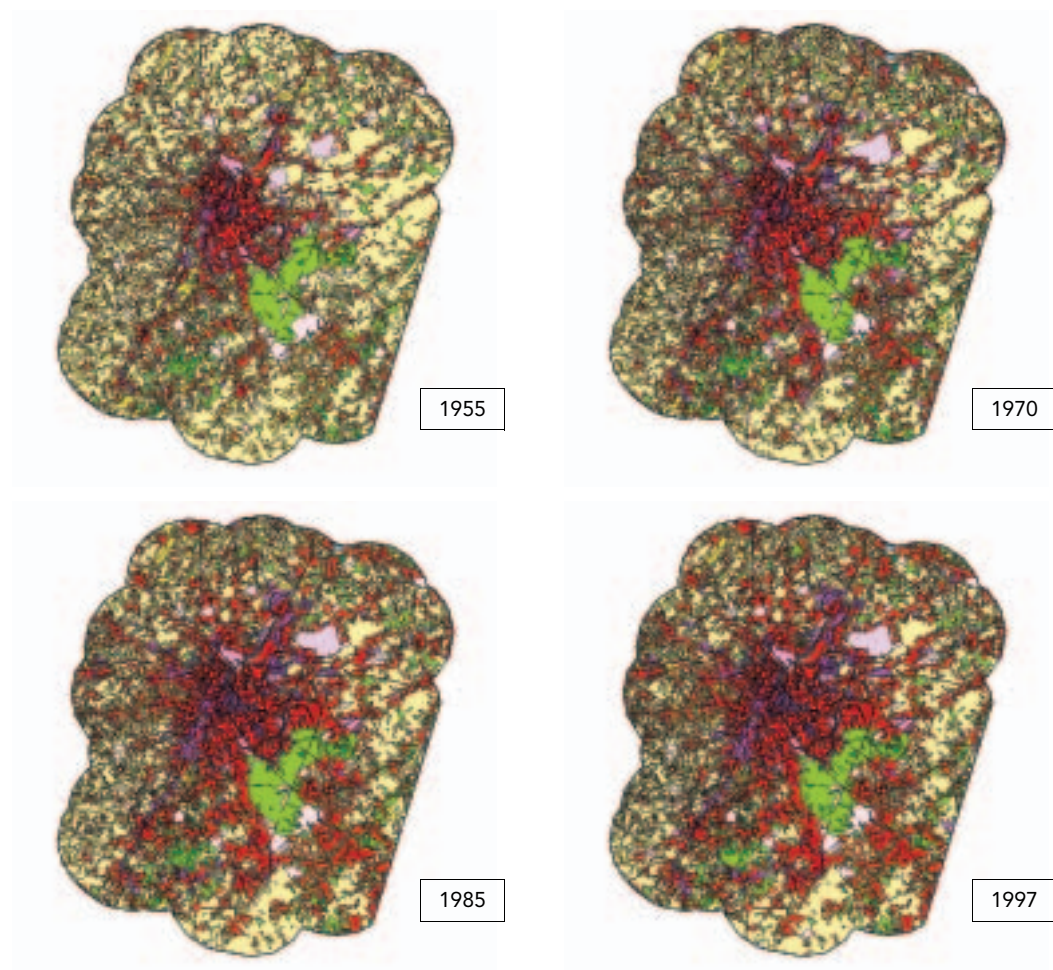


Figure A.1.3

Brussels



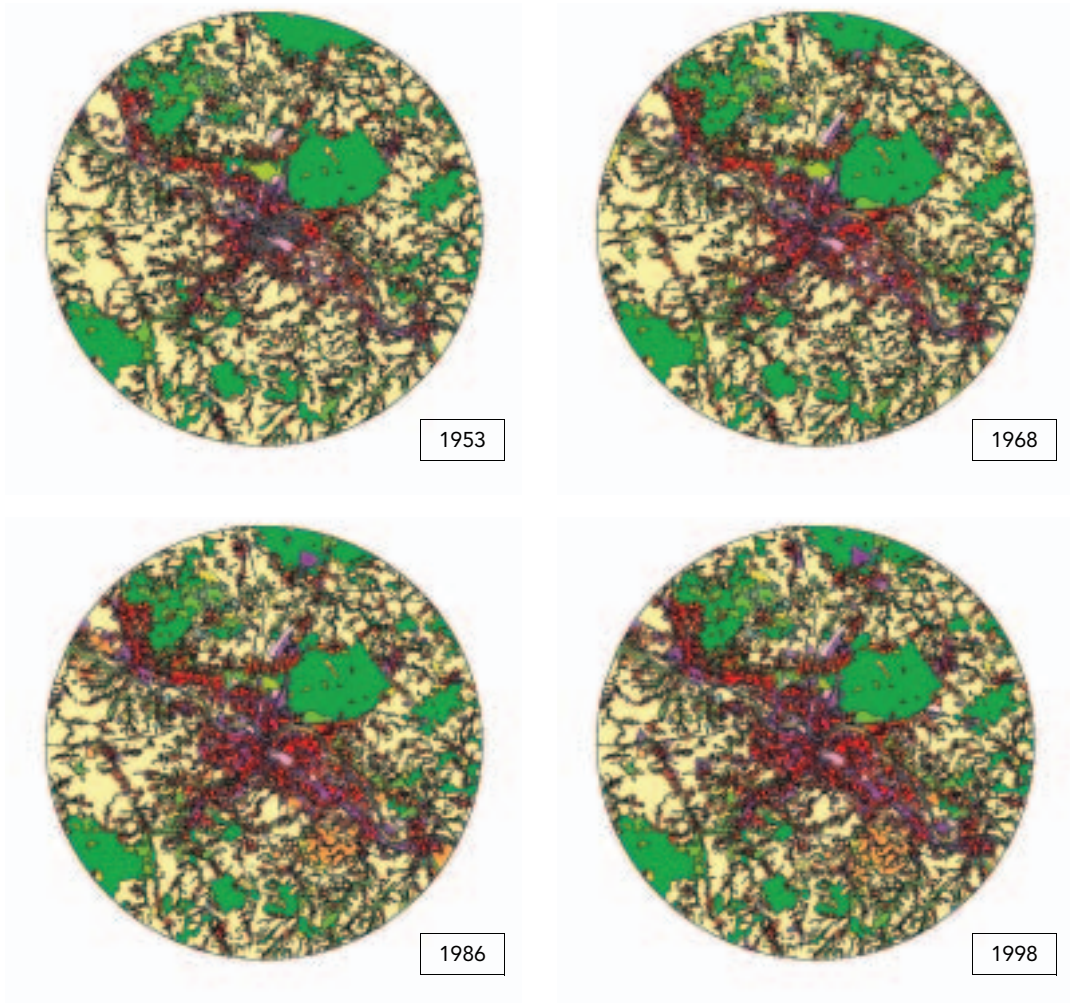
- Residential continuous dense urban fabric
- Residential discontinuous urban fabric
- Residential discontinuous sparse urban fabric
- Industrial areas
- Commercial areas
- Public and private services
- Toll ways
- Other roads
- Rail ways
- Port areas
- Airports
- Mineral extraction sites
- Dump sites
- Construction sites
- Abandoned land
- Green urban areas
- Sport and leisure facilities
- Non-irrigated arable land
- Vineyards
- Fruit trees and berry plantations
- Complex cultivation patterns
- Land principally occupied by agriculture, with significant areas of natural vegetation
- Agro-forestry areas
- Broad-leaved forest
- Coniferous forest
- Natural grassland
- Transitional woodland shrub
- Sparsely vegetated areas
- Canals
- Rivers
- Water bodies



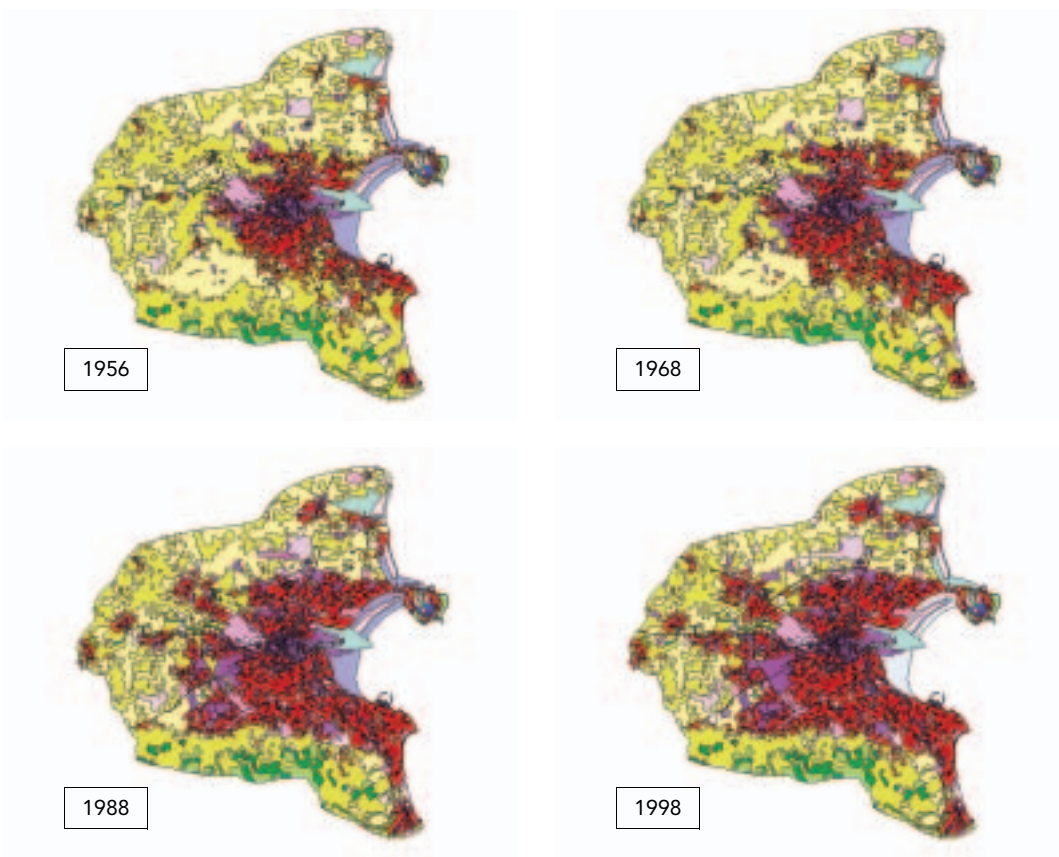
- Residential continuous dense urban fabric
- Residential discontinuous urban fabric
- Residential discontinuous sparse urban fabric
- Industrial areas
- Commercial areas
- Public and private services
- Toll ways
- Other roads
- Rail ways
- Port areas
- Airports
- Mineral extraction sites
- Dump sites
- Construction sites
- Abandoned land
- Green urban areas
- Sport and leisure facilities
- Non-irrigated arable land
- Vineyards
- Fruit trees and berry plantations
- Complex cultivation patterns
- Land principally occupied by agriculture, with significant areas of natural vegetation
- Agro-forestry areas
- Broad-leaved forest
- Coniferous forest
- Natural grassland
- Transitional woodland shrub
- Sparsely vegetated areas
- Canals
- Rivers
- Water bodies

Figure A.1.5

Dresden



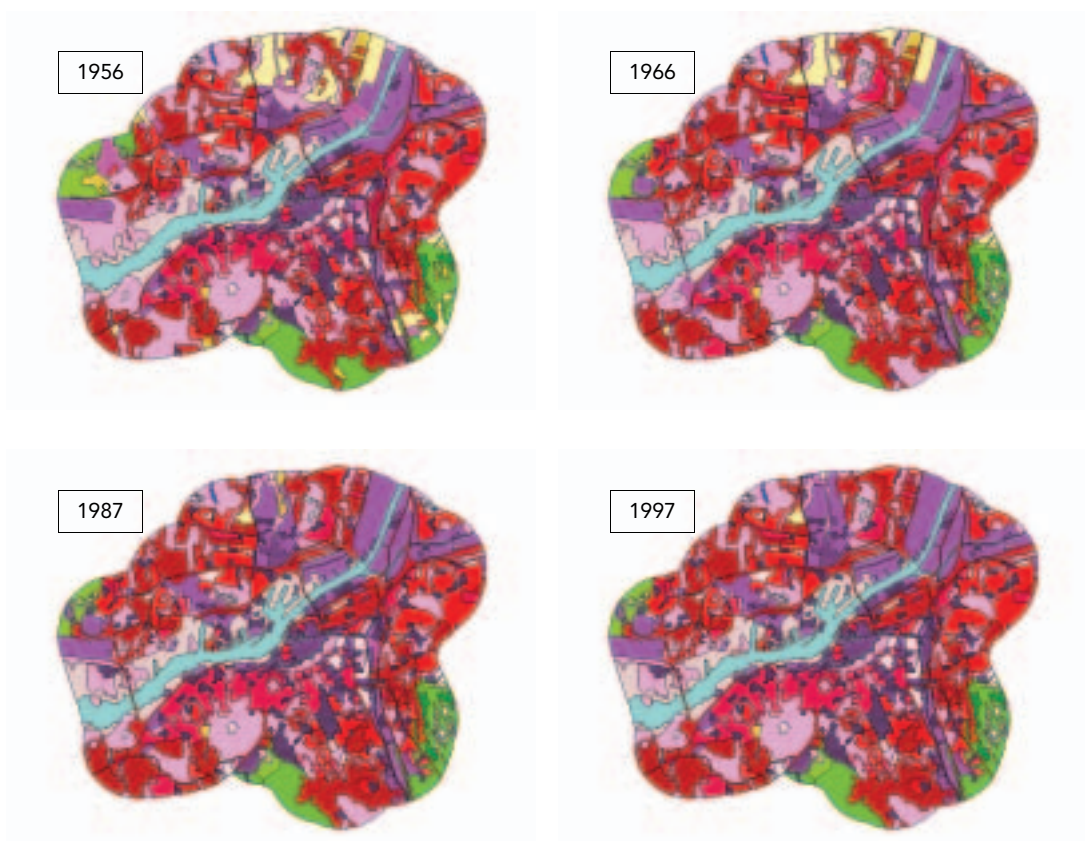
- Residential continuous dense urban fabric
- Residential discontinuous urban fabric
- Residential discontinuous sparse urban fabric
- Industrial areas
- Commercial areas
- Public and private services
- Toll ways
- Other roads
- Rail ways
- Port areas
- Airports
- Mineral extraction sites
- Dump sites
- Construction sites
- Abandoned land
- Green urban areas
- Sport and leisure facilities
- Non-irrigated arable land
- Vineyards
- Fruit trees and berry plantations
- Complex cultivation patterns
- Land principally occupied by agriculture, with significant areas of natural vegetation
- Agro-forestry areas
- Broad-leaved forest
- Coniferous forest
- Natural grassland
- Transitional woodland shrub
- Sparsely vegetated areas
- Canals
- Rivers
- Water bodies

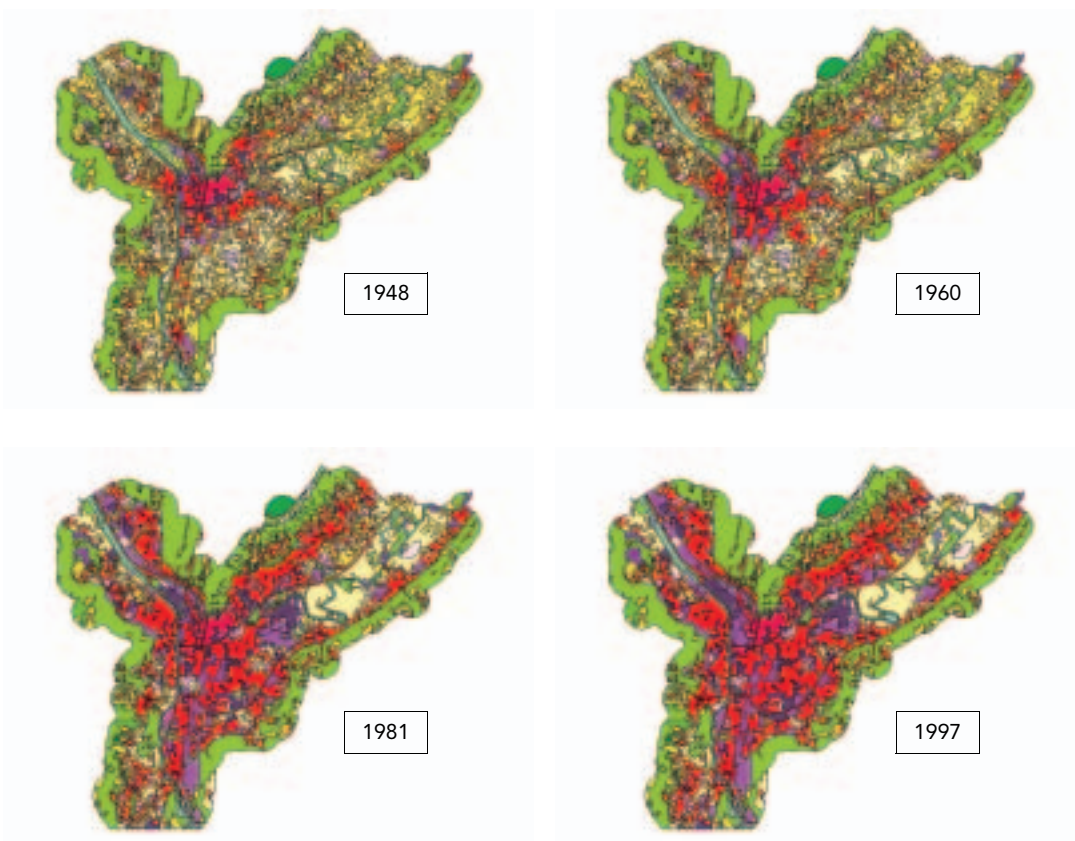


- Residential continuous dense urban fabric
- Residential discontinuous urban fabric
- Residential discontinuous sparse urban fabric
- Industrial areas
- Commercial areas
- Public and private services
- Toll ways
- Other roads
- Rail ways
- Port areas
- Airports
- Mineral extraction sites
- Dump sites
- Construction sites
- Abandoned land
- Green urban areas
- Sport and leisure facilities
- Non-irrigated arable land
- Vineyards
- Fruit trees and berry plantations
- Complex cultivation patterns
- Land principally occupied by agriculture, with significant areas of natural vegetation
- Agro-forestry areas
- Broad-leaved forest
- Coniferous forest
- Natural grassland
- Transitional woodland shrub
- Sparsely vegetated areas
- Canals
- Rivers
- Water bodies

Figure A.1.7

Goeteborg

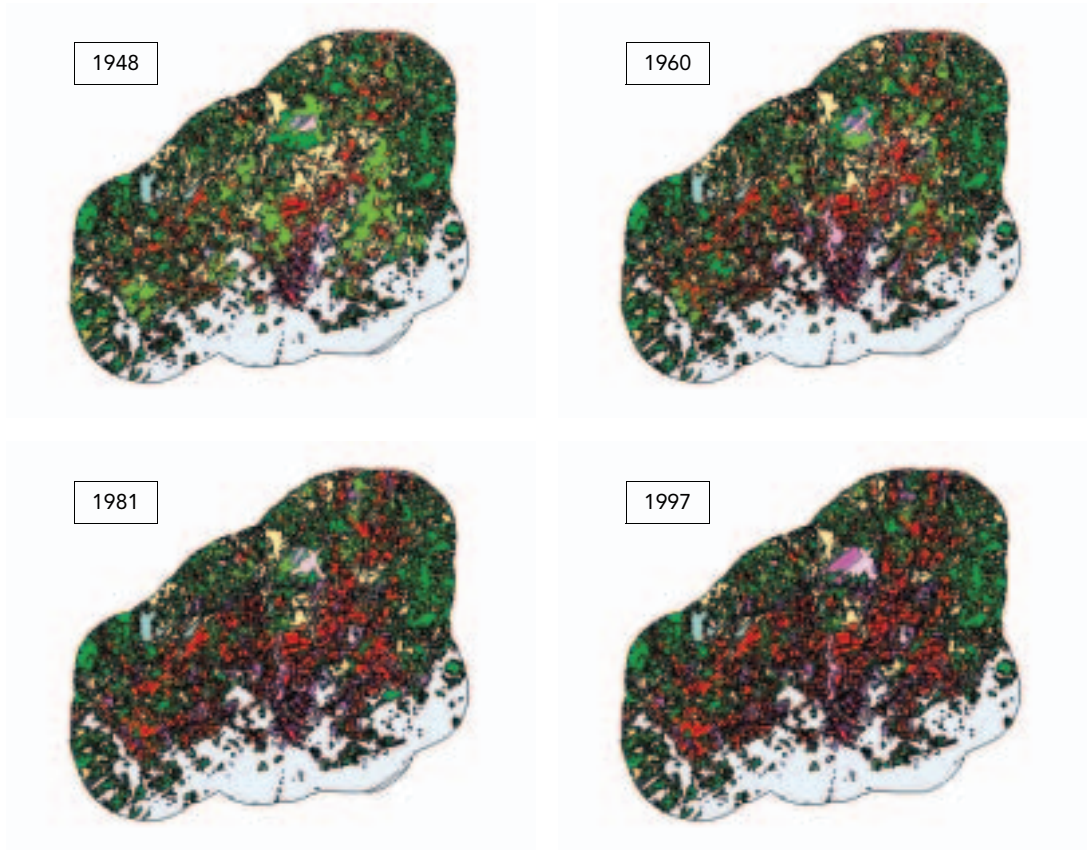




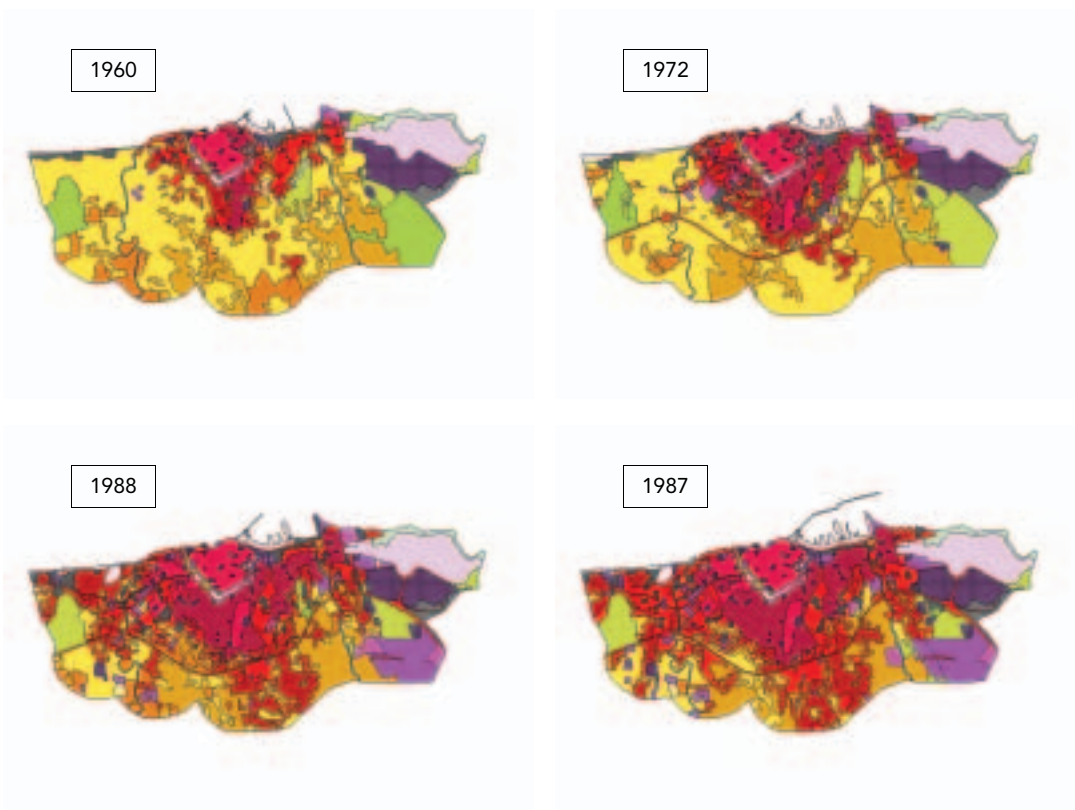
- Residential continuous dense urban fabric
- Residential discontinuous urban fabric
- Residential discontinuous sparse urban fabric
- Industrial areas
- Commercial areas
- Public and private services
- Toll ways
- Other roads
- Rail ways
- Port areas
- Airports
- Mineral extraction sites
- Dump sites
- Construction sites
- Abandoned land
- Green urban areas
- Sport and leisure facilities
- Non-irrigated arable land
- Vineyards
- Fruit trees and berry plantations
- Complex cultivation patterns
- Land principally occupied by agriculture, with significant areas of natural vegetation
- Agro-forestry areas
- Broad-leaved forest
- Coniferous forest
- Natural grassland
- Transitional woodland shrub
- Sparsely vegetated areas
- Canals
- Rivers
- Water bodies

Figure A.1.9

Helsinki



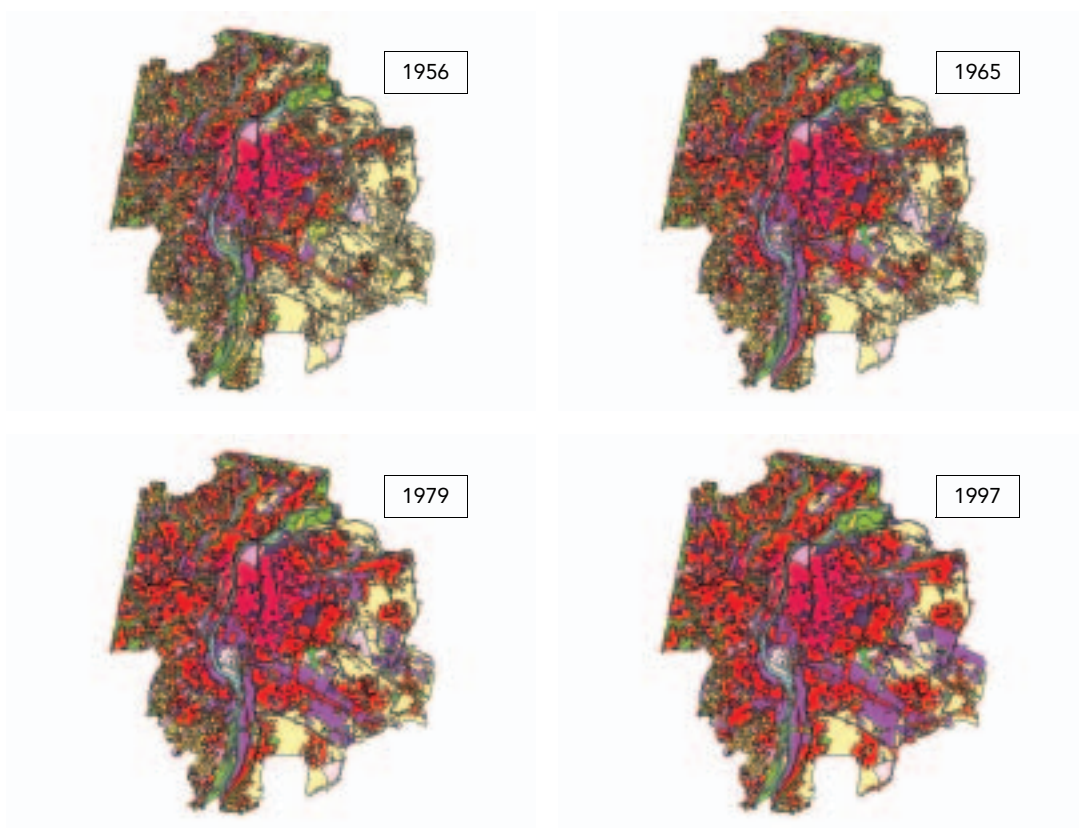
- Residential continuous dense urban fabric
- Residential discontinuous urban fabric
- Residential discontinuous sparse urban fabric
- Industrial areas
- Commercial areas
- Public and private services
- Toll ways
- Other roads
- Rail ways
- Port areas
- Airports
- Mineral extraction sites
- Dump sites
- Construction sites
- Abandoned land
- Green urban areas
- Sport and leisure facilities
- Non-irrigated arable land
- Vineyards
- Fruit trees and berry plantations
- Complex cultivation patterns
- Land principally occupied by agriculture, with significant areas of natural vegetation
- Agro-forestry areas
- Broad-leaved forest
- Coniferous forest
- Natural grassland
- Transitional woodland shrub
- Sparsely vegetated areas
- Canals
- Rivers
- Water bodies

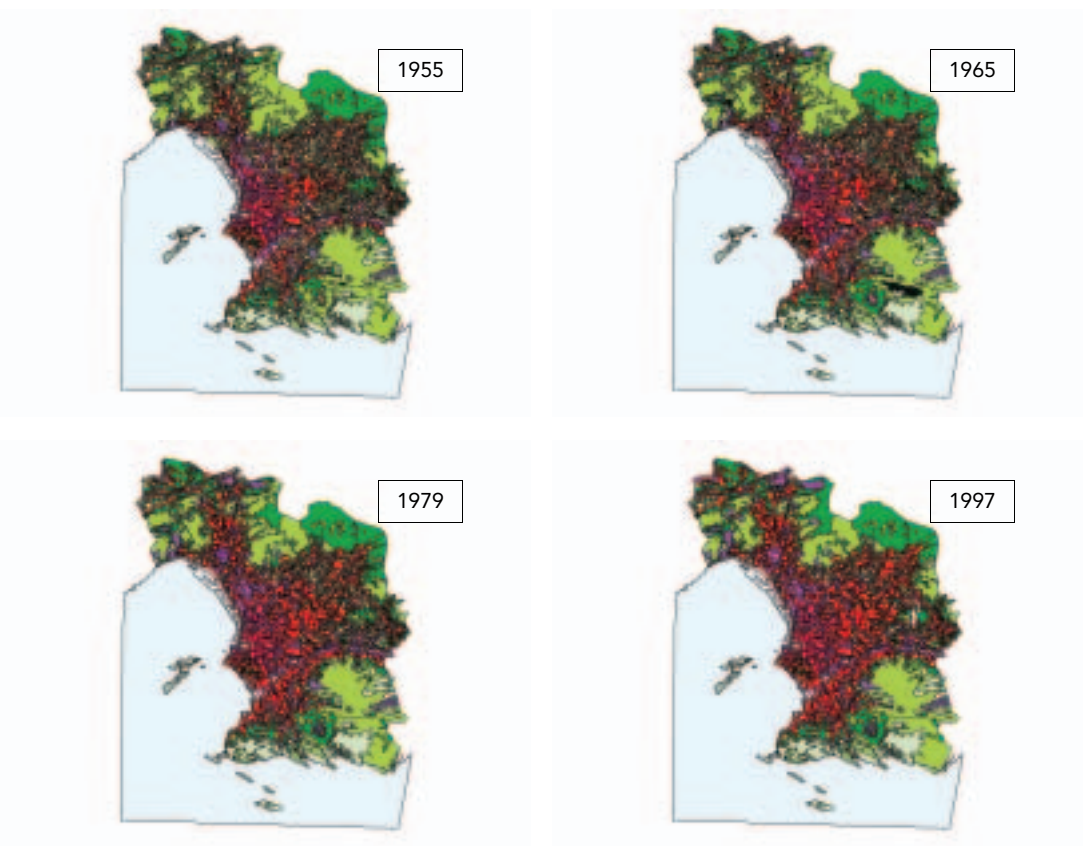


- Residential continuous dense urban fabric
- Residential discontinuous urban fabric
- Residential discontinuous sparse urban fabric
- Industrial areas
- Commercial areas
- Public and private services
- Toll ways
- Other roads
- Rail ways
- Port areas
- Airports
- Mineral extraction sites
- Dump sites
- Construction sites
- Abandoned land
- Green urban areas
- Sport and leisure facilities
- Non-irrigated arable land
- Vineyards
- Fruit trees and berry plantations
- Complex cultivation patterns
- Land principally occupied by agriculture, with significant areas of natural vegetation
- Agro-forestry areas
- Broad-leaved forest
- Coniferous forest
- Natural grassland
- Transitional woodland shrub
- Sparsely vegetated areas
- Canals
- Rivers
- Water bodies

Figure A.1.11

Lyon

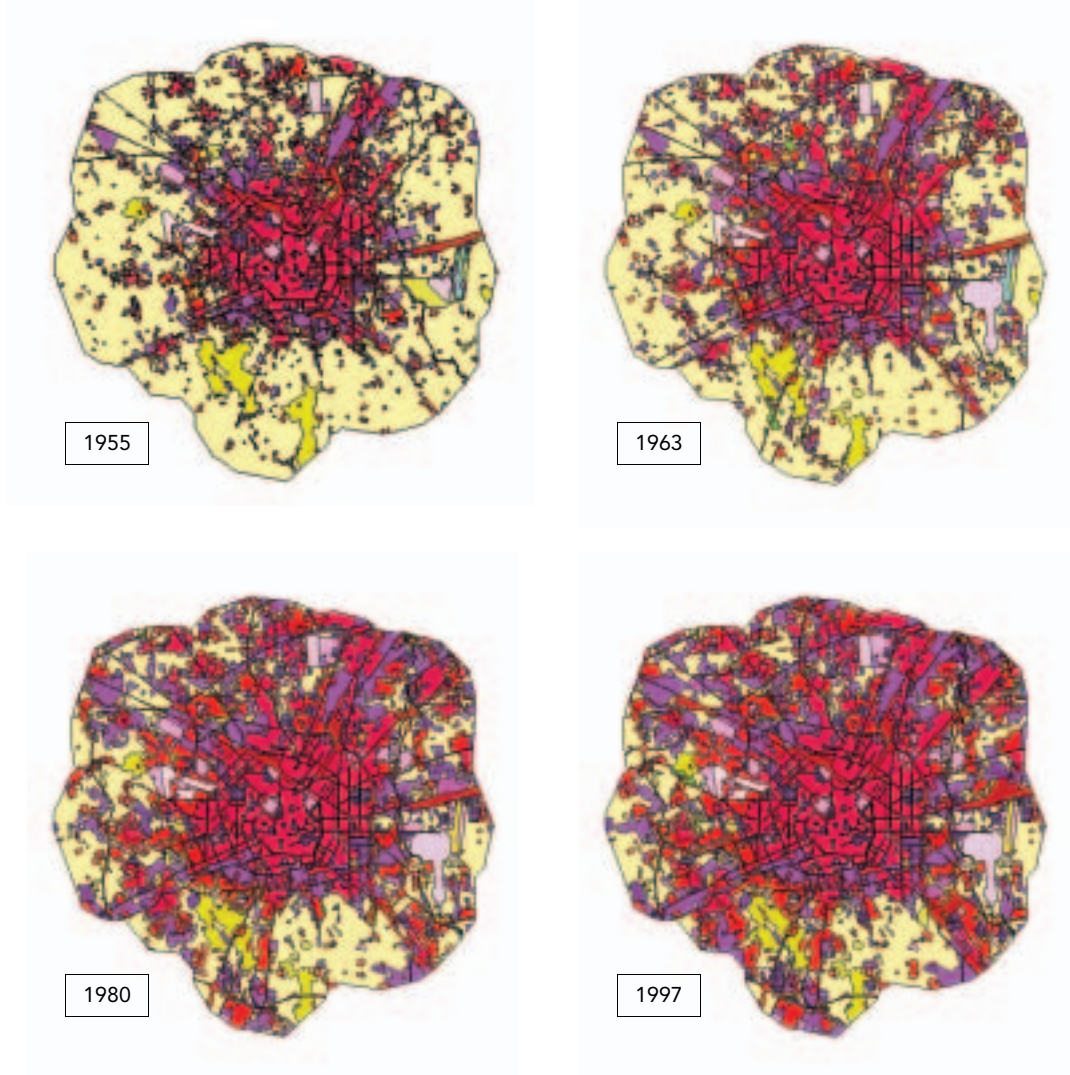




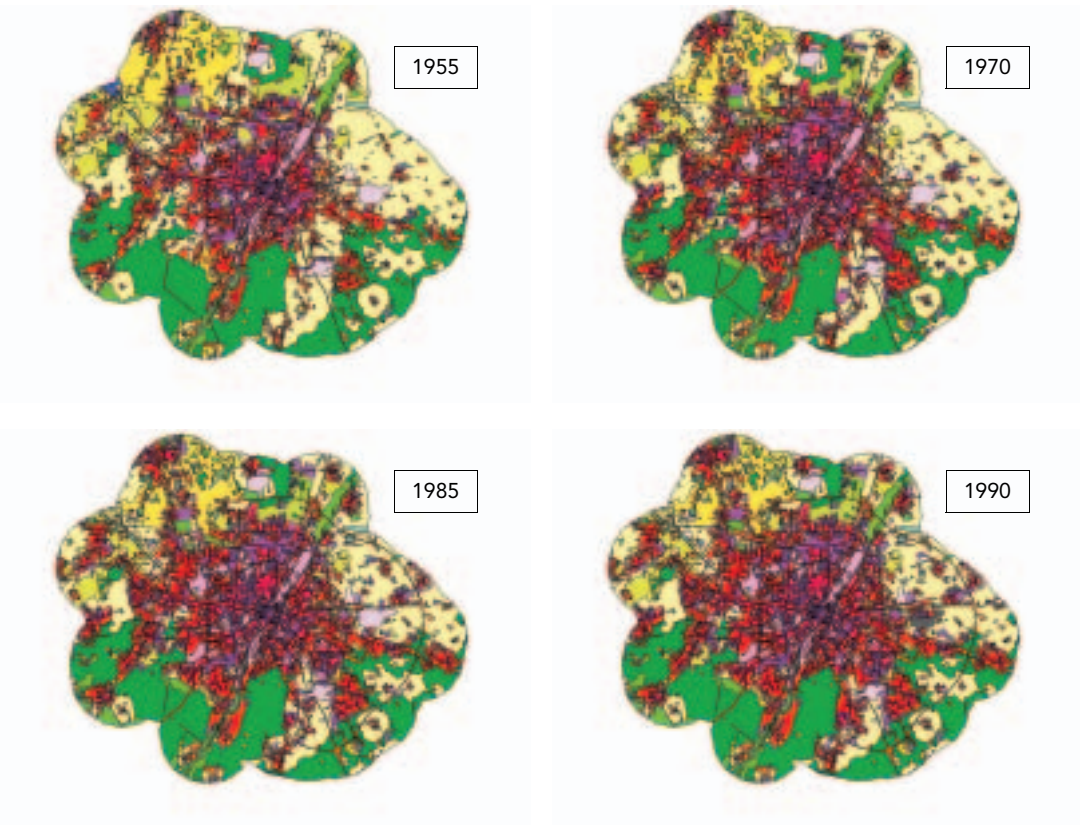
- Residential continuous dense urban fabric
- Residential discontinuous urban fabric
- Residential discontinuous sparse urban fabric
- Industrial areas
- Commercial areas
- Public and private services
- Toll ways
- Other roads
- Rail ways
- Port areas
- Airports
- Mineral extraction sites
- Dump sites
- Construction sites
- Abandoned land
- Green urban areas
- Sport and leisure facilities
- Non-irrigated arable land
- Vineyards
- Fruit trees and berry plantations
- Complex cultivation patterns
- Land principally occupied by agriculture, with significant areas of natural vegetation
- Agro-forestry areas
- Broad-leaved forest
- Coniferous forest
- Natural grassland
- Transitional woodland shrub
- Sparsely vegetated areas
- Canals
- Rivers
- Water bodies

Figure A.1.13

Milano

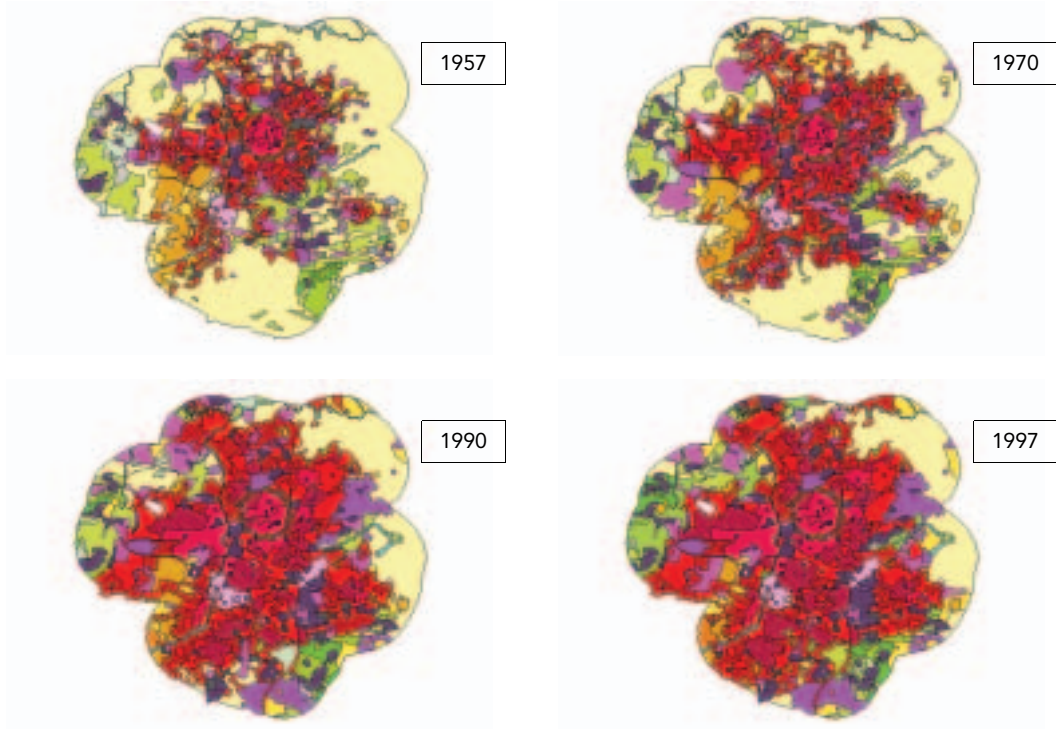


- Residential continuous dense urban fabric
- Residential discontinuous urban fabric
- Residential discontinuous sparse urban fabric
- Industrial areas
- Commercial areas
- Public and private services
- Toll ways
- Other roads
- Rail ways
- Port areas
- Airports
- Mineral extraction sites
- Dump sites
- Construction sites
- Abandoned land
- Green urban areas
- Sport and leisure facilities
- Non-irrigated arable land
- Vineyards
- Fruit trees and berry plantations
- Complex cultivation patterns
- Land principally occupied by agriculture, with significant areas of natural vegetation
- Agro-forestry areas
- Broad-leaved forest
- Coniferous forest
- Natural grassland
- Transitional woodland shrub
- Sparsely vegetated areas
- Canals
- Rivers
- Water bodies

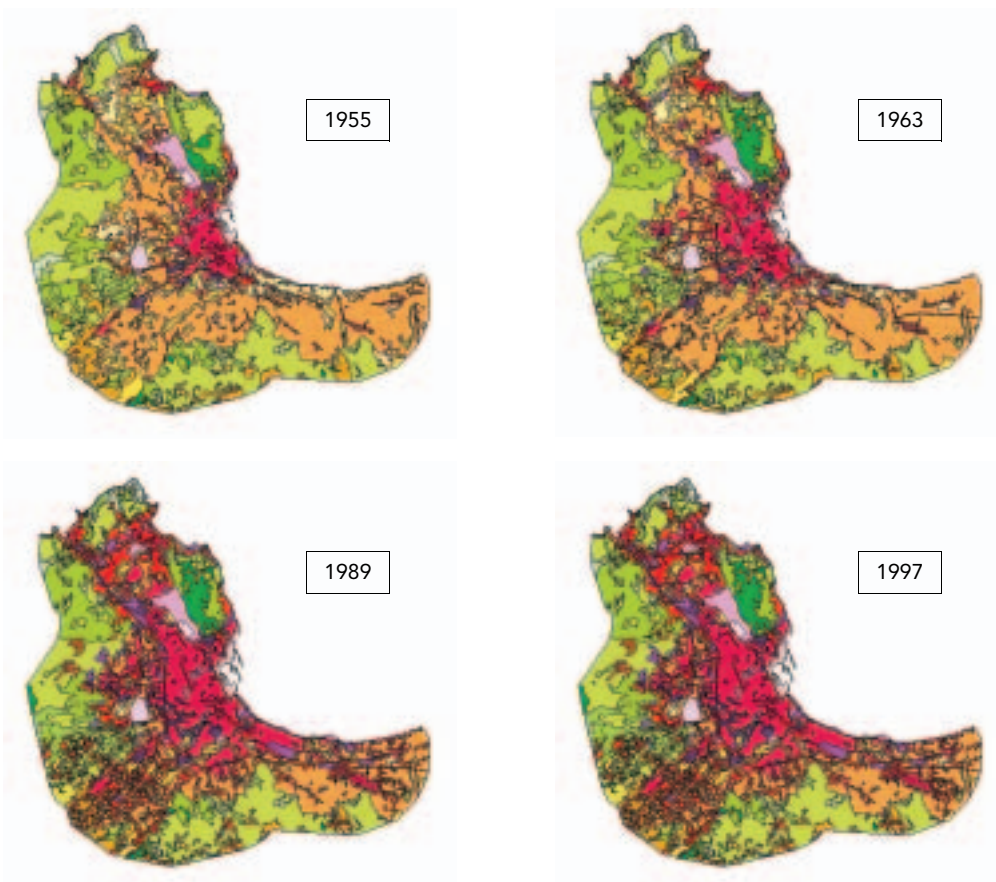


- Residential continuous dense urban fabric
- Residential discontinuous urban fabric
- Residential discontinuous sparse urban fabric
- Industrial areas
- Commercial areas
- Public and private services
- Toll ways
- Other roads
- Rail ways
- Port areas
- Airports
- Mineral extraction sites
- Dump sites
- Construction sites
- Abandoned land
- Green urban areas
- Sport and leisure facilities
- Non-irrigated arable land
- Vineyards
- Fruit trees and berry plantations
- Complex cultivation patterns
- Land principally occupied by agriculture, with significant areas of natural vegetation
- Agro-forestry areas
- Broad-leaved forest
- Coniferous forest
- Natural grassland
- Transitional woodland shrub
- Sparsely vegetated areas
- Canals
- Rivers
- Water bodies

Figure A.1.15 Nicosia

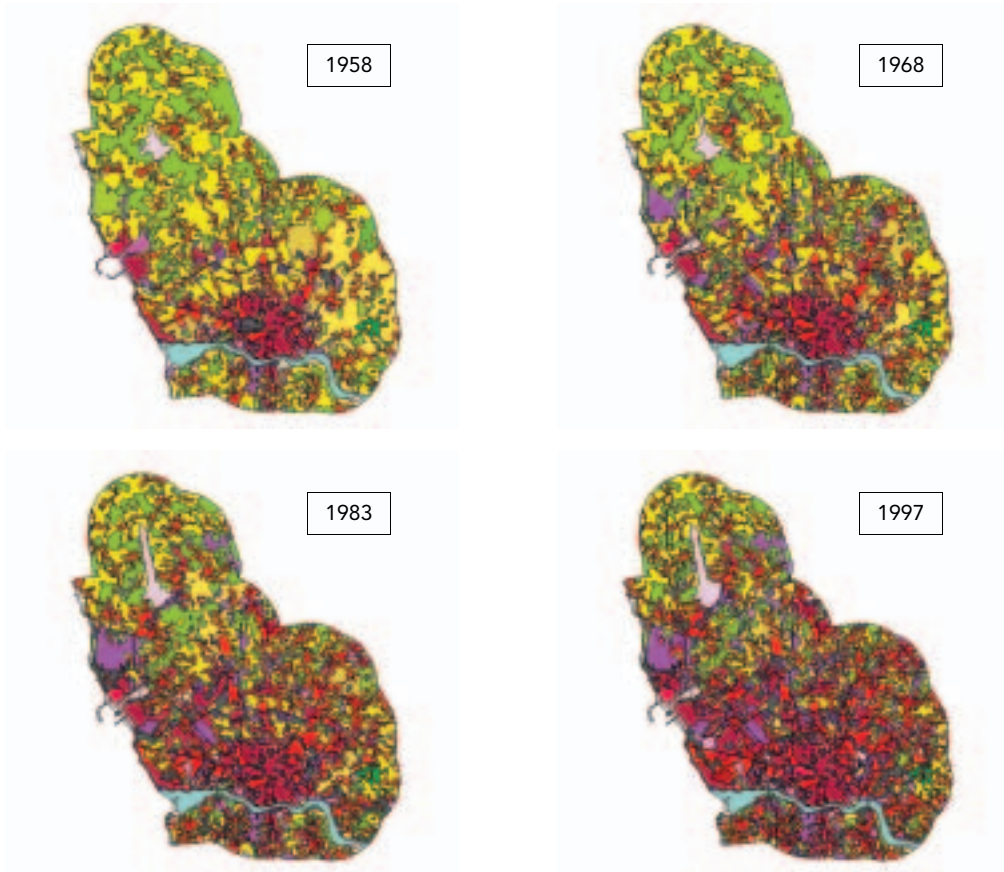


- Residential continuous dense urban fabric
- Residential discontinuous urban fabric
- Residential discontinuous sparse urban fabric
- Industrial areas
- Commercial areas
- Public and private services
- Toll ways
- Other roads
- Rail ways
- Port areas
- Airports
- Mineral extraction sites
- Dump sites
- Construction sites
- Abandoned land
- Green urban areas
- Sport and leisure facilities
- Non-irrigated arable land
- Vineyards
- Fruit trees and berry plantations
- Complex cultivation patterns
- Land principally occupied by agriculture, with significant areas of natural vegetation
- Agro-forestry areas
- Broad-leaved forest
- Coniferous forest
- Natural grassland
- Transitional woodland shrub
- Sparsely vegetated areas
- Canals
- Rivers
- Water bodies



- Residential continuous dense urban fabric
- Residential discontinuous urban fabric
- Residential discontinuous sparse urban fabric
- Industrial areas
- Commercial areas
- Public and private services
- Toll ways
- Other roads
- Rail ways
- Port areas
- Airports
- Mineral extraction sites
- Dump sites
- Construction sites
- Abandoned land
- Green urban areas
- Sport and leisure facilities
- Non-irrigated arable land
- Vineyards
- Fruit trees and berry plantations
- Complex cultivation patterns
- Land principally occupied by agriculture, with significant areas of natural vegetation
- Agro-forestry areas
- Broad-leaved forest
- Coniferous forest
- Natural grassland
- Transitional woodland shrub
- Sparsely vegetated areas
- Canals
- Rivers
- Water bodies

Figure A.1.17 Porto



- Residential continuous dense urban fabric
- Residential discontinuous urban fabric
- Residential discontinuous sparse urban fabric
- Industrial areas
- Commercial areas
- Public and private services
- Toll ways
- Other roads
- Rail ways
- Port areas
- Airports
- Mineral extraction sites
- Dump sites
- Construction sites
- Abandoned land
- Green urban areas
- Sport and leisure facilities
- Non-irrigated arable land
- Vineyards
- Fruit trees and berry plantations
- Complex cultivation patterns
- Land principally occupied by agriculture, with significant areas of natural vegetation
- Agro-forestry areas
- Broad-leaved forest
- Coniferous forest
- Natural grassland
- Transitional woodland shrub
- Sparsely vegetated areas
- Canals
- Rivers
- Water bodies

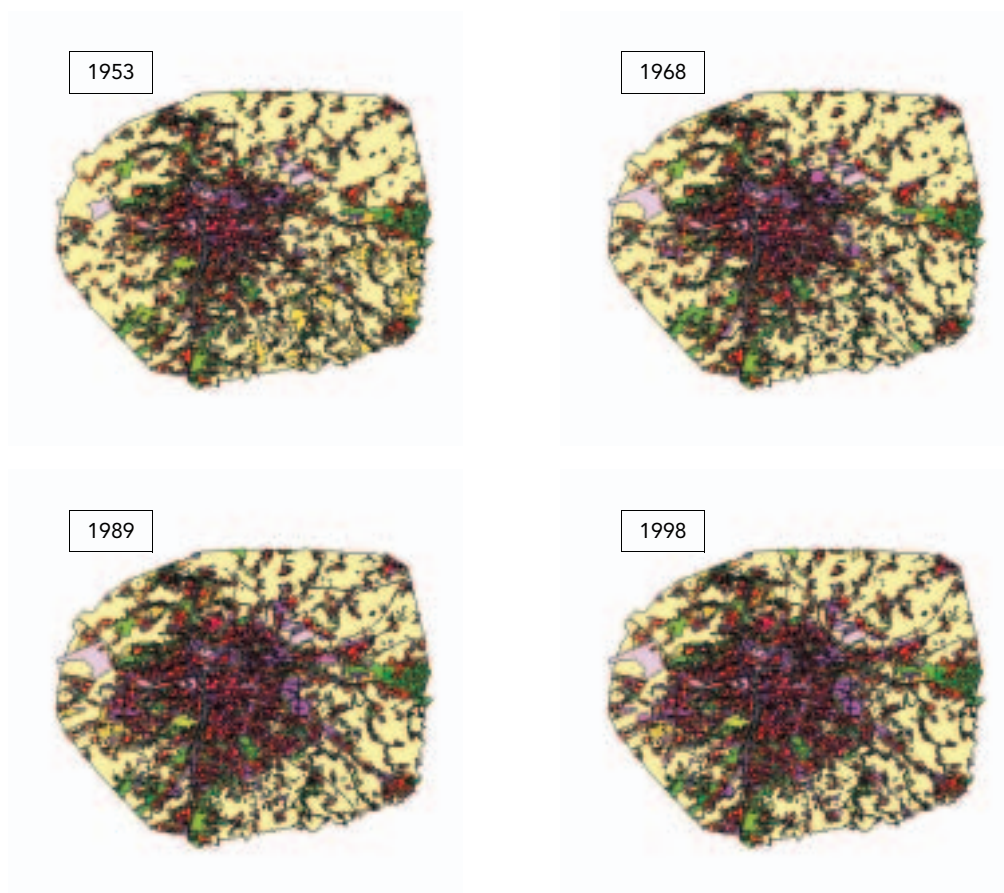
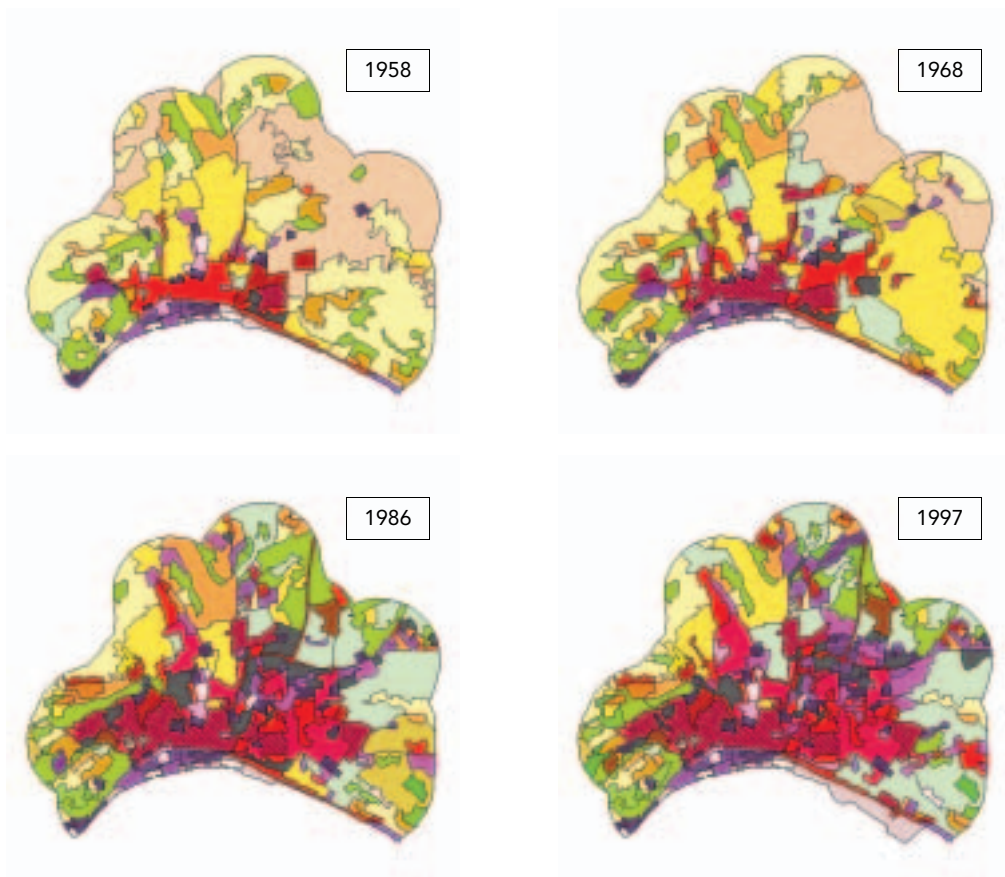
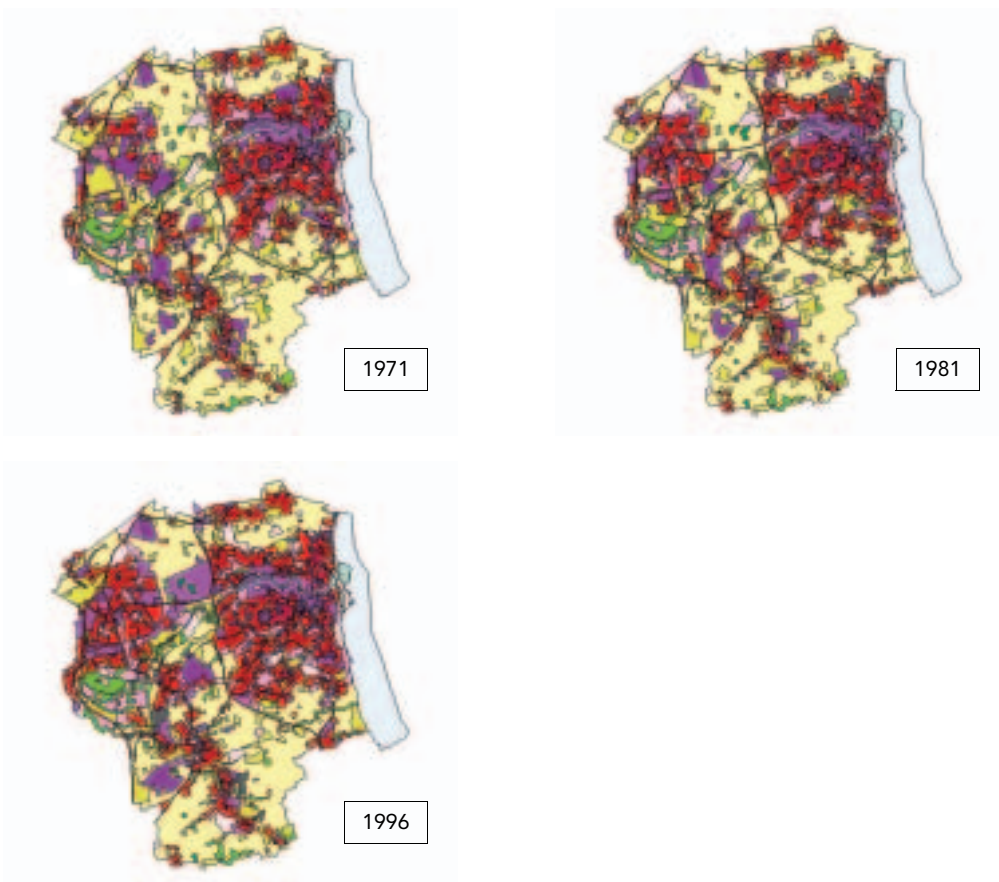


Figure A.1.19 Setubal



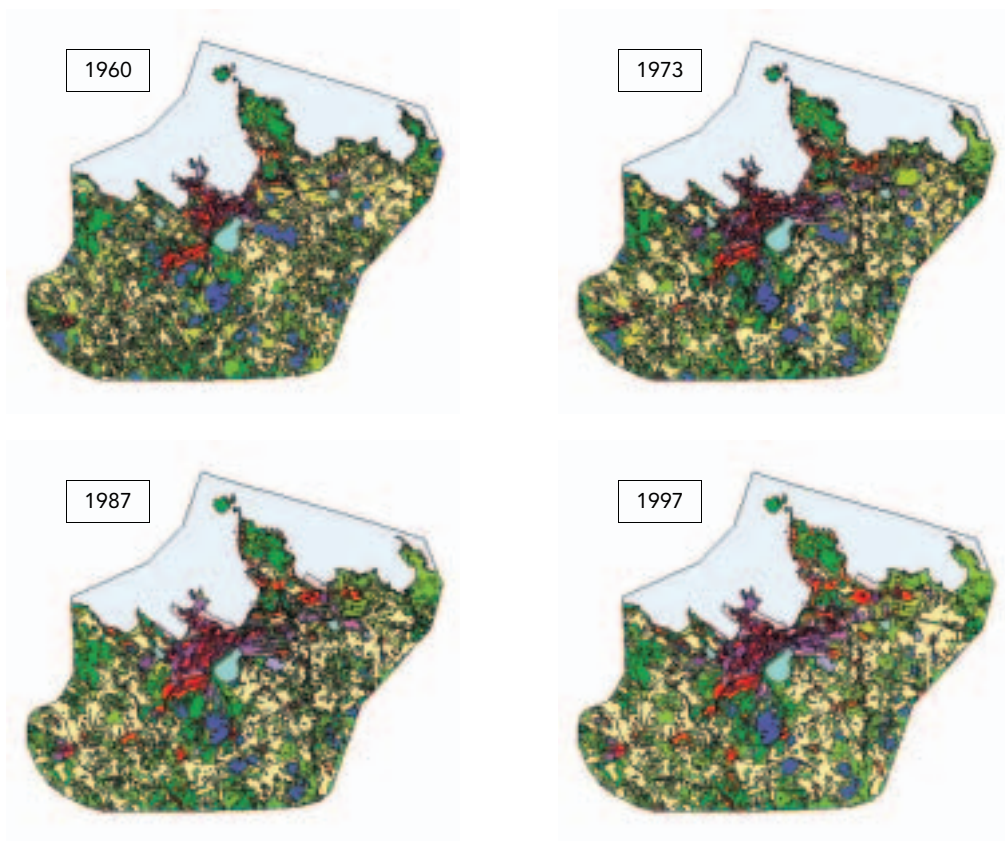
- Residential continuous dense urban fabric
- Residential discontinuous urban fabric
- Residential discontinuous sparse urban fabric
- Industrial areas
- Commercial areas
- Public and private services
- Toll ways
- Other roads
- Rail ways
- Port areas
- Airports
- Mineral extraction sites
- Dump sites
- Construction sites
- Abandoned land
- Green urban areas
- Sport and leisure facilities
- Non-irrigated arable land
- Vineyards
- Fruit trees and berry plantations
- Complex cultivation patterns
- Land principally occupied by agriculture, with significant areas of natural vegetation
- Agro-forestry areas
- Broad-leaved forest
- Coniferous forest
- Natural grassland
- Transitional woodland shrub
- Sparsely vegetated areas
- Canals
- Rivers
- Water bodies



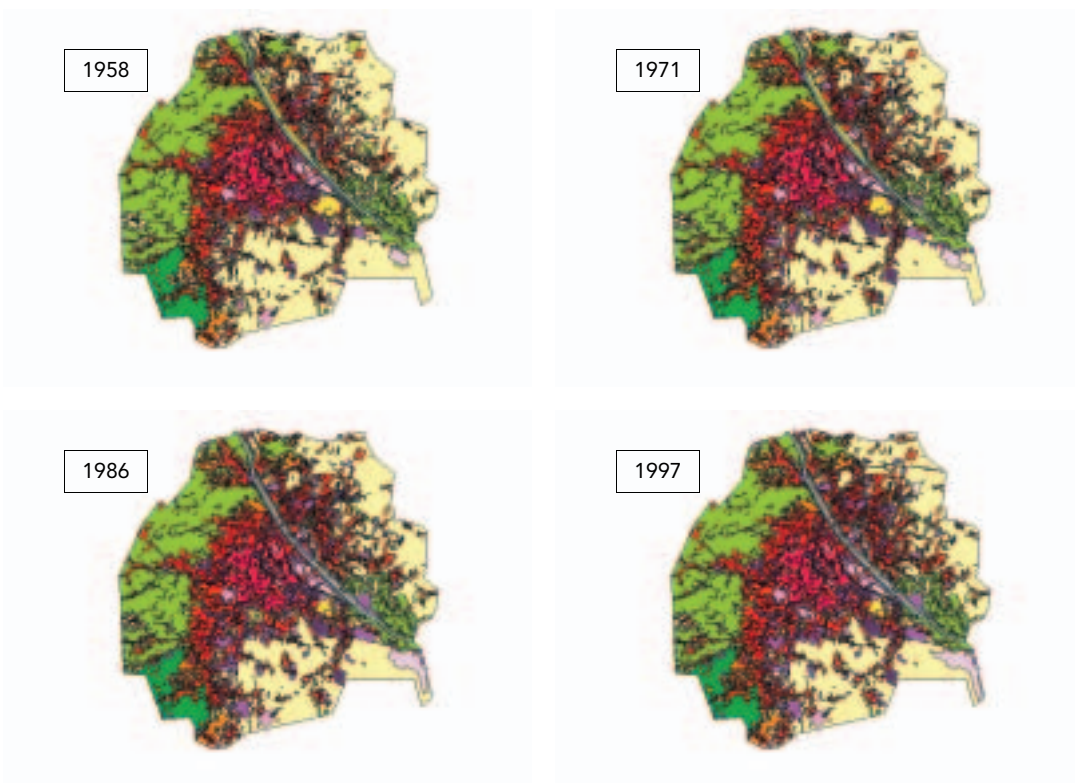
- Residential continuous dense urban fabric
- Residential discontinuous urban fabric
- Residential discontinuous sparse urban fabric
- Industrial areas
- Commercial areas
- Public and private services
- Toll ways
- Other roads
- Rail ways
- Port areas
- Airports
- Mineral extraction sites
- Dump sites
- Construction sites
- Abandoned land
- Green urban areas
- Sport and leisure facilities
- Non-irrigated arable land
- Vineyards
- Fruit trees and berry plantations
- Complex cultivation patterns
- Land principally occupied by agriculture, with significant areas of natural vegetation
- Agro-forestry areas
- Broad-leaved forest
- Coniferous forest
- Natural grassland
- Transitional woodland shrub
- Sparsely vegetated areas
- Canals
- Rivers
- Water bodies

Figure A.1.21

Tallinn

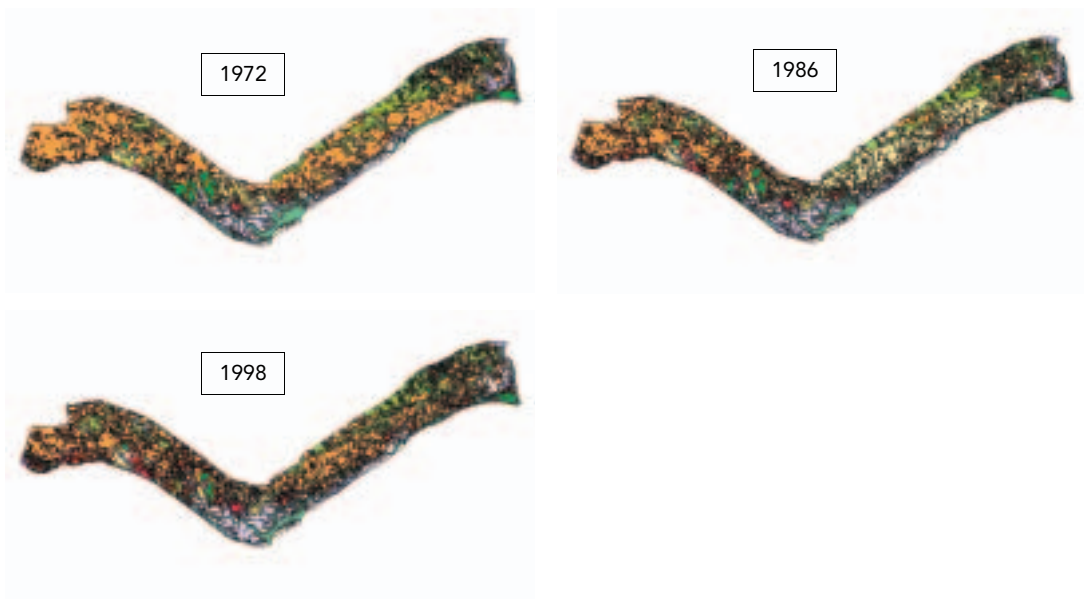


- Residential continuous dense urban fabric
- Residential discontinuous urban fabric
- Residential discontinuous sparse urban fabric
- Industrial areas
- Commercial areas
- Public and private services
- Toll ways
- Other roads
- Rail ways
- Port areas
- Airports
- Mineral extraction sites
- Dump sites
- Construction sites
- Abandoned land
- Green urban areas
- Sport and leisure facilities
- Non-irrigated arable land
- Vineyards
- Fruit trees and berry plantations
- Complex cultivation patterns
- Land principally occupied by agriculture, with significant areas of natural vegetation
- Agro-forestry areas
- Broad-leaved forest
- Coniferous forest
- Natural grassland
- Transitional woodland shrub
- Sparsely vegetated areas
- Canals
- Rivers
- Water bodies



- Residential continuous dense urban fabric
- Residential discontinuous urban fabric
- Residential discontinuous sparse urban fabric
- Industrial areas
- Commercial areas
- Public and private services
- Toll ways
- Other roads
- Rail ways
- Port areas
- Airports
- Mineral extraction sites
- Dump sites
- Construction sites
- Abandoned land
- Green urban areas
- Sport and leisure facilities
- Non-irrigated arable land
- Vineyards
- Fruit trees and berry plantations
- Complex cultivation patterns
- Land principally occupied by agriculture, with significant areas of natural vegetation
- Agro-forestry areas
- Broad-leaved forest
- Coniferous forest
- Natural grassland
- Transitional woodland shrub
- Sparsely vegetated areas
- Canals
- Rivers
- Water bodies

Figure A.1.23 Algarve



- Residential continuous dense urban fabric
- Residential discontinuous urban fabric
- Residential discontinuous sparse urban fabric
- Industrial areas
- Commercial areas
- Public and private services
- Toll ways
- Other roads
- Rail ways
- Port areas
- Airports
- Mineral extraction sites
- Dump sites
- Construction sites
- Abandoned land
- Green urban areas
- Sport and leisure facilities
- Non-irrigated arable land
- Vineyards
- Fruit trees and berry plantations
- Complex cultivation patterns
- Land principally occupied by agriculture, with significant areas of natural vegetation
- Agro-forestry areas
- Broad-leaved forest
- Coniferous forest
- Natural grassland
- Transitional woodland shrub
- Sparsely vegetated areas
- Canals
- Rivers
- Water bodies

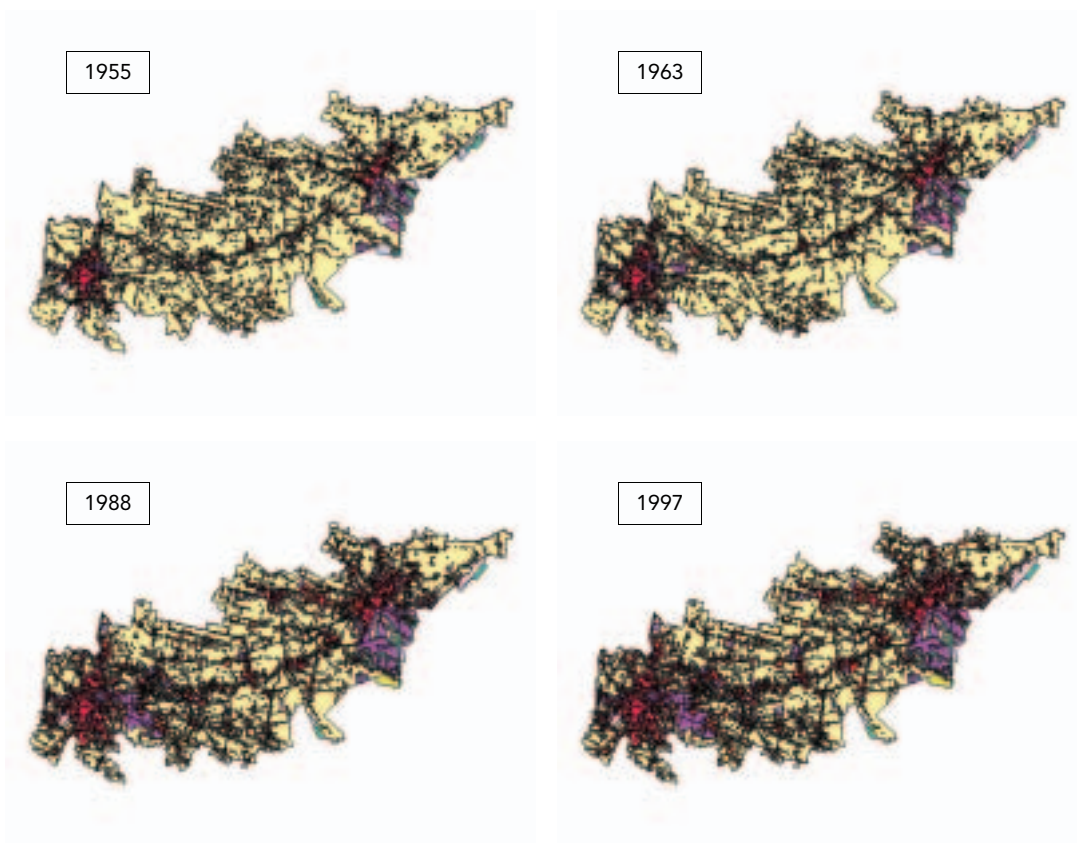
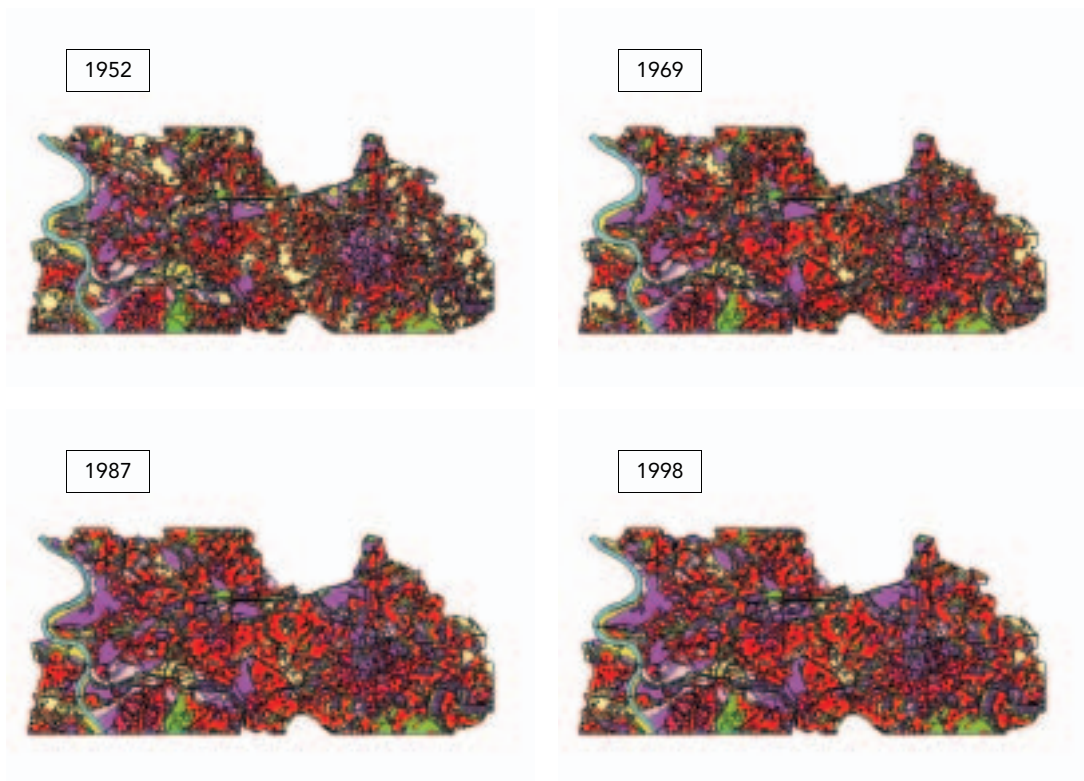


Figure A.1.25

Ruhrgebiet



- Residential continuous dense urban fabric
- Residential discontinuous urban fabric
- Residential discontinuous sparse urban fabric
- Industrial areas
- Commercial areas
- Public and private services
- Toll ways
- Other roads
- Rail ways
- Port areas
- Airports
- Mineral extraction sites
- Dump sites
- Construction sites
- Abandoned land
- Green urban areas
- Sport and leisure facilities
- Non-irrigated arable land
- Vineyards
- Fruit trees and berry plantations
- Complex cultivation patterns
- Land principally occupied by agriculture, with significant areas of natural vegetation
- Agro-forestry areas
- Broad-leaved forest
- Coniferous forest
- Natural grassland
- Transitional woodland shrub
- Sparsely vegetated areas
- Canals
- Rivers
- Water bodies

The legend originally adopted by Murbandy/Moland. The legend currently comprises over 80 classes at the fourth level, complementing the third level offered by Corine.

Figure A.1.26

Class	Description	Colour sample	Colour pattern
1.1.1.1	Residential continuous dense urban fabric		
1.1.1.2	Residential continuous medium dense urban fabric		
1.1.2.1	Residential discontinuous urban fabric		
1.1.2.2	Residential discontinuous sparse urban fabric		
1.2.1.1	Industrial areas		
1.2.1.2	Commercial areas		
1.2.1.3	Public and private services		
1.2.2	Road and rail networks and associated land		
1.2.2.1	Fast transit roads		
1.2.2.2	Other Roads		
1.2.2.3	Railways and associated land		
1.2.2.4	Other rails		
1.2.3	Port areas		
1.2.4	Airports		
1.3.1	Mineral extraction sites		
1.3.2	Dump sites		
1.3.3	Construction sites		
1.3.4	Abandoned land (brownfields, etc.)		
1.4.1	Green urban areas		
1.4.2	Sport and leisure facilities		
2.1.1	Non-irrigated arable land		
2.1.2	Permanently irrigated land		
2.1.3	Rice fields		
2.2.1	Vineyards		
2.2.2	Fruit trees and berry plantations		
2.2.3	Olive groves		
2.3.1	Pastures		
2.4.1	Annual crops associated with permanent crops		
2.4.2	Complex cultivation patters		
2.4.3	Land principally occupied by agriculture, with significant areas of natural vegetation		
2.4.4	Agro-forestry areas		
3.1.1	Broad-leaved forest		
3.1.2	Coniferous forest		
3.1.3	Mixed forest		
3.2.1	Natural grassland		
3.2.2	Moors and heathland		
3.2.3	Sclerophyllous vegetation		
3.2.4	Transitional woodland shrub		
3.3.1	Beaches, dunes and sand plains		
3.3.2	Bare rock		
3.3.3	Sparsely vegetated areas		
3.3.4	Burnt areas		
3.3.5	Glaciers and perpetual snow		
4.1.1	Inland marshes		
4.1.2	Peatbogs		
4.2.1	Salt marshes		
4.2.2	Salines		
4.2.3	Intertidal flats		
5.1.1	Water courses		
5.1.2	Water bodies		
5.1.2.1	Natural standing waters		
5.1.2.2	Artificial reservoirs		
5.2.1	Coastal lagoons		
5.2.2	Estuaries		
5.2.3	Sea and ocean		
5.1.1.1	Canals		
5.1.1.2	Rivers		