

Category		Title
NFR:	6.D	Other waste
SNAP:	091003 091005 091006 091008	Sludge spreading Compost production Biogas production Other production of fuel (refuse derived fuel, etc.)
ISIC:		
Version	Guidebook 2009	

Coordinator

Carlo Trozzi

Contributing authors (including to earlier versions of this chapter)

Marc Deslauriers, David R. Niemi and Mike Woodfield

Contents

1	Overview.....	3
2	Description of sources.....	3
2.1	Process description.....	3
2.2	Techniques	3
2.3	Emissions	3
2.4	Controls	3
3	Methods.....	4
3.1	Choice of method	4
3.2	Tier 1 default approach.....	4
3.3	Tier 2 technology-specific approach	5
3.4	Tier 3 emission modelling and use of facility data.....	9
4	Data quality	9
5	References.....	10
6	Point of enquiry.....	10

1 Overview

This chapter covers the emissions from other waste. Because these are not considered to be significant on a national level for any pollutant, there will only be a brief description and a set of emission factors presented in this chapter. The activities that will be discussed are:

- sludge spreading
- compost production from waste
- car fires
- house fires.

2 Description of sources

2.1 Process description

Sludge spreading

The sludge produced in a wastewater treatment plant is either burned, mechanically dried or dried by spreading in the open air. In the Netherlands some information on the composition of communal sludge is available. Some of the pollutants, especially halogenated hydrocarbons and polycyclic aromatic hydrocarbons (PAHs), might also become airborne on spreading.

Compost production

In many areas organic domestic waste is gathered separately. Composting the organic waste produces a reusable product.

Car and house fires

This activity includes mostly unwanted fires in cars and various types of houses.

2.2 Techniques

Not relevant.

2.3 Emissions

Emissions to air from this source category include odours. Also, small amounts of ammonia are produced. These are considered in this chapter.

Emissions from fires obviously also include emissions of particulates, possibly heavy metals and main pollutants like NO_x, SO_x, CO and non-methane volatile organic compounds (NMVOC).

2.4 Controls

No specific information available for this source category.

3 Methods

3.1 Choice of method

Figure 3-1 presents the procedure to select the methods for estimating emissions from this source category. The basic idea is:

- if detailed information is available; use it;
- if the source category is a key category, a Tier 2 or better method must be applied and detailed input data must be collected. The decision tree directs the user in such cases to the Tier 2 method, since it is expected that it is more easy to obtain the necessary input data for this approach than to collect ‘facility level’ data needed for a Tier 3 estimate;
- the alternative of applying a Tier 3 method, using detailed process modelling, is not explicitly included in this decision tree. However, detailed modelling will always be done at facility level and results of such modelling could be seen as ‘facility data’ in the decision tree.

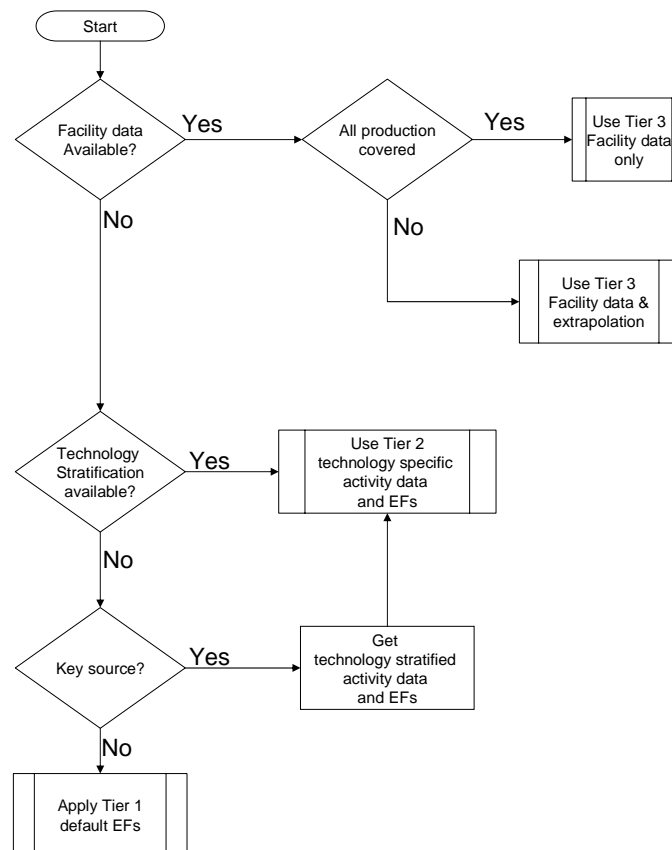


Figure 3-1 Decision tree for source category 6.D Other waste

3.2 Tier 1 default approach

Because the processes considered in this source category are not comparable, no Tier 1 emission factors could be provided for this source category. For each of the specific processes considered in this section, emission factors have been defined at a Tier 2 level. If the decision tree directs the

user to a Tier 1 approach, it is recommended to use the Tier 2 approach provided in the next section.

3.3 Tier 2 technology-specific approach

3.3.1 Algorithm

To apply the Tier 2 approach, both the activity data and the emission factors need to be stratified according to the different process types that may occur in the country.

The approach followed to apply a Tier 2 approach is as follows.

Stratify the processes in ‘other waste’ in the country to model the different process types occurring in the national industry into the inventory by:

- defining the production using each of the separate process types (together called ‘technologies’ in the formulae below) separately; and
- applying technology-specific emission factors for each process type:

$$E_{\text{pollutant}} = \sum_{\text{technologies}} AR_{\text{production,technology}} \times EF_{\text{technology,pollutant}} \quad (1)$$

where:

$AR_{\text{production,technology}}$ = the production rate within the source category, using this specific technology,

$EF_{\text{technology,pollutant}}$ = the emission factor for this technology and this pollutant.

A country where only one technology is implemented will result in a penetration factor of 100 % and the algorithm reduces to:

$$E_{\text{pollutant}} = AR_{\text{production}} \times EF_{\text{technology,pollutant}} \quad (2)$$

where:

$E_{\text{pollutant}}$ = the emission of the specified pollutant,

$AR_{\text{production}}$ = the activity rate for this specific technology,

$EF_{\text{pollutant}}$ = the emission factor for this pollutant.

3.3.2 Technology-specific emission factors

This section presents Tier 2 technology-specific emission factors for compost production, sludge spreading, car fires and various types of house fires.

Table 3-1 Tier 2 emission factors for source category 6.D Other waste, compost production

Tier 2 emission factors					
	Code	Name			
NFR Source Category	6.D	Other waste			
Fuel	NA				
SNAP (if applicable)	091005	Compost production			
Technologies/Practices	Compost production				
Region or regional conditions					
Abatement technologies					
Not applicable	NOx, CO				
Not estimated	NMVOC, SOx, TSP, PM10, PM2.5, Pb, Cd, Hg, As, Cr, Cu, Ni, Se, Zn, Aldrin, Chlordane, Chlordecone, Dieldrin, Endrin, Heptachlor, Heptabromo-biphenyl, Mirex, Toxaphene, HCH, DDT, PCB, PCDD/F, Benzo(a)pyrene, Benzo(b)fluoranthene, Benzo(k)fluoranthene, Indeno(1,2,3-cd)pyrene, Total 4 PAHs, HCB, PCP, SCCP				
Pollutant	Value	Unit	95% confidence interval		Reference
			Lower	Upper	
NH3	0.24	kg/Mg organic waste	0.1	0.7	Guidebook (2006)

Table 3-2 Tier 2 emission factors for source category 6.D Other waste, sludge spreading

Tier 2 emission factors					
	Code	Name			
NFR Source Category	6.D	Other waste			
Fuel	NA				
SNAP (if applicable)	091003	Sludge spreading			
Technologies/Practices	Sludge spreading				
Region or regional conditions					
Abatement technologies					
Not applicable	NOx, CO				
Not estimated	NMVOC, SOx, TSP, PM10, PM2.5, Pb, Cd, Hg, As, Cr, Cu, Ni, Se, Zn, Aldrin, Chlordane, Chlordecone, Dieldrin, Endrin, Heptachlor, Heptabromo-biphenyl, Mirex, Toxaphene, HCH, DDT, PCB, PCDD/F, Benzo(a)pyrene, Benzo(b)fluoranthene, Benzo(k)fluoranthene, Indeno(1,2,3-cd)pyrene, Total 4 PAHs, HCB, PCP, SCCP				
Pollutant	Value	Unit	95% confidence interval		Reference
			Lower	Upper	
NH3	50	g/kg NH3 in the sludge	10	150	Guidebook (2006)

Table 3-3 Tier 2 emission factors for source category 6.D Other waste, car fire

Tier 2 emission factors					
	Code	Name			
NFR Source Category	6.D	Other waste			
Fuel	NA				
SNAP (if applicable)					
Technologies/Practices	Car fire				
Region or regional conditions					
Abatement technologies					
Not applicable	NH3				
Not estimated	NOx, CO, NMVOC, SOx, Pb, Cd, Hg, As, Cr, Cu, Ni, Se, Zn, Aldrin, Chlordane, Chlordecone, Dieldrin, Endrin, Heptachlor, Heptabromo-biphenyl, Mirex, Toxaphene, HCH, DDT, PCB, Benzo(a)pyrene, Benzo(b)fluoranthene, Benzo(k)fluoranthene, Indeno(1,2,3-cd)pyrene, Total 4 PAHs, HCB, PCP, SCCP				
Pollutant	Value	Unit	95% confidence interval		Reference
			Lower	Upper	
TSP	2.3	kg/fire	1	5	Aasestad (2007)
PM10	2.3	kg/fire	1	5	Aasestad (2007)
PM2.5	2.3	kg/fire	1	5	Aasestad (2007)
PCDD/F	0.047	µg/fire	0.02	0.1	Aasestad (2007)

Table 3-4 Tier 2 emission factors for source category 6.D Other waste, detached house fire

Tier 2 emission factors					
		Code	Name		
NFR Source Category		6.D	Other waste		
Fuel		NA			
SNAP (if applicable)					
Technologies/Practices		Detached house fire			
Region or regional conditions					
Abatement technologies					
Not applicable		NH3			
Not estimated		NOx, CO, NMVOC, SOx, Ni, Se, Zn, Aldrin, Chlordane, Chlordecone, Dieldrin, Endrin, Heptachlor, Heptabromo-biphenyl, Mirex, Toxaphene, HCH, DDT, PCB, Benzo(a)pyrene, Benzo(b)fluoranthene, Benzo(k)fluoranthene, Indeno(1,2,3-cd)pyrene, Total 4 PAHs, HCB, PCP, SCCP			
Pollutant	Value	Unit	95% confidence interval		Reference
			Lower	Upper	
TSP	0.14	kg/fire	0.07	0.3	Aasestad (2007)
PM10	0.14	kg/fire	0.07	0.3	Aasestad (2007)
PM2.5	0.14	kg/fire	0.07	0.3	Aasestad (2007)
Pb	0.42	mg/fire	0.2	1	Aasestad (2007)
Cd	0.85	mg/fire	0.4	2	Aasestad (2007)
Hg	0.85	mg/fire	0.4	2	Aasestad (2007)
As	1.4	mg/fire	0.7	3	Aasestad (2007)
Cr	1.3	mg/fire	0.7	3	Aasestad (2007)
Cu	3	mg/fire	1.5	9	Aasestad (2007)
PCDD/F	1.4	µg/fire	0.7	3	Aasestad (2007)

Table 3-5 Tier 2 emission factors for source category 6.D Other waste, undetached house fire

Tier 2 emission factors					
		Code	Name		
NFR Source Category		6.D	Other waste		
Fuel		NA			
SNAP (if applicable)					
Technologies/Practices		Undetached house fire			
Region or regional conditions					
Abatement technologies					
Not applicable		NH3			
Not estimated		NOx, CO, NMVOC, SOx, Ni, Se, Zn, Aldrin, Chlordane, Chlordecone, Dieldrin, Endrin, Heptachlor, Heptabromo-biphenyl, Mirex, Toxaphene, HCH, DDT, PCB, Benzo(a)pyrene, Benzo(b)fluoranthene, Benzo(k)fluoranthene, Indeno(1,2,3-cd)pyrene, Total 4 PAHs, HCB, PCP, SCCP			
Pollutant	Value	Unit	95% confidence interval		Reference
			Lower	Upper	
TSP	0.06	kg/fire	0.03	0.1	Aasestad (2007)
PM10	0.06	kg/fire	0.03	0.1	Aasestad (2007)
PM2.5	0.06	kg/fire	0.03	0.1	Aasestad (2007)
Pb	0.18	mg/fire	0.1	0.4	Aasestad (2007)
Cd	0.36	mg/fire	0.2	0.7	Aasestad (2007)
Hg	0.36	mg/fire	0.2	0.7	Aasestad (2007)
As	0.58	mg/fire	0.3	1	Aasestad (2007)
Cr	0.55	mg/fire	0.3	1	Aasestad (2007)
Cu	1.3	mg/fire	0.7	3	Aasestad (2007)
PCDD/F	0.62	µg/fire	0.3	1	Aasestad (2007)

Table 3-6 Tier 2 emission factors for source category 6.D Other waste, apartment building fire

Tier 2 emission factors					
NFR Source Category	Code	Name			
	6.D	Other waste			
Fuel	NA				
SNAP (if applicable)					
Technologies/Practices	Apartment building fire				
Region or regional conditions					
Abatement technologies					
Not applicable	NH3				
Not estimated	NOx, CO, NMVOC, SOx, Ni, Se, Zn, Aldrin, Chlordane, Chlordecone, Dieldrin, Endrin, Heptachlor, Heptabromo-biphenyl, Mirex, Toxaphene, HCH, DDT, PCB, Benzo(a)pyrene, Benzo(b)fluoranthene, Benzo(k)fluoranthene, Indeno(1,2,3-cd)pyrene, Total 4 PAHs, HCB, PCP, SCCP				
Pollutant	Value	Unit	95% confidence interval		Reference
			Lower	Upper	
TSP	0.04	kg/fire	0.02	0.1	Aasestad (2007)
PM10	0.04	kg/fire	0.02	0.1	Aasestad (2007)
PM2.5	0.04	kg/fire	0.02	0.1	Aasestad (2007)
Pb	0.13	mg/fire	0.07	0.3	Aasestad (2007)
Cd	0.26	mg/fire	0.1	0.5	Aasestad (2007)
Hg	0.26	mg/fire	0.1	0.5	Aasestad (2007)
As	0.41	mg/fire	0.2	0.8	Aasestad (2007)
Cr	0.39	mg/fire	0.2	0.8	Aasestad (2007)
Cu	0.91	mg/fire	0.5	2	Aasestad (2007)
PCDD/F	0.44	µg/fire	0.2	1	Aasestad (2007)

Table 3-7 Tier 2 emission factors for source category 6.D Other waste, industrial building fire

Tier 2 emission factors					
NFR Source Category	Code	Name			
	6.D	Other waste			
Fuel	NA				
SNAP (if applicable)					
Technologies/Practices	Industrial building fire				
Region or regional conditions					
Abatement technologies					
Not applicable	NH3				
Not estimated	NOx, CO, NMVOC, SOx, Ni, Se, Zn, Aldrin, Chlordane, Chlordecone, Dieldrin, Endrin, Heptachlor, Heptabromo-biphenyl, Mirex, Toxaphene, HCH, DDT, PCB, Benzo(a)pyrene, Benzo(b)fluoranthene, Benzo(k)fluoranthene, Indeno(1,2,3-cd)pyrene, Total 4 PAHs, HCB, PCP, SCCP				
Pollutant	Value	Unit	95% confidence interval		Reference
			Lower	Upper	
TSP	0.03	kg/fire	0.01	0.1	Aasestad (2007)
PM10	0.03	kg/fire	0.01	0.1	Aasestad (2007)
PM2.5	0.03	kg/fire	0.01	0.1	Aasestad (2007)
Pb	0.08	mg/fire	0.04	0.2	Aasestad (2007)
Cd	0.16	mg/fire	0.1	0.3	Aasestad (2007)
Hg	0.16	mg/fire	0.1	0.3	Aasestad (2007)
As	0.25	mg/fire	0.1	0.5	Aasestad (2007)
Cr	0.24	mg/fire	0.1	0.5	Aasestad (2007)
Cu	0.57	mg/fire	0.3	1	Aasestad (2007)
PCDD/F	0.27	µg/fire	0.1	0.5	Aasestad (2007)

3.3.3 Abatement

A number of add-on technologies exist that are aimed at reducing the emissions of specific pollutants. The resulting emission can be calculated by replacing the technology-specific emission factor with an abated emission factor as given in the formula:

$$EF_{technology,abated} = (1 - \eta_{abatement}) \times EF_{technology,unabated} \quad (3)$$

3.3.3.1 Compost production

This section provides the abatement efficiency for compost production using a bio filter.

Table 3-8 Abatement efficiencies ($\eta_{abatement}$) for source category 6.D Other waste, compost production

Tier 2 Abatement efficiencies					
	Code	Name			
NFR Source Category	6.D	Other waste			
Fuel	NA	not applicable			
SNAP (if applicable)	091005	Compost production from waste			
Abatement technology	Pollutant	Efficiency	95% confidence interval		Reference
		Default Value	Lower	Upper	
Biofilter	NH3	90%	70%	97%	Guidebook (2006)
Not applicable: NOx; CO; SOx; TSP; PM10; PM2.5; As; Cr; Cd; Cu; Hg; Ni; Pb; Se; Zn; Aldrin; Chlordane; Chlordecone; Dieldrin; Endrin; Heptachlor; Heptabromo-biphenyl; Mirex; Toxaphene; HCH; DDT; PCB; benzo(a)pyrene; benzo(b)fluoranthene; benzo(k)fluoranthene; indeno(1,2,3-cd)pyrene; PCDD/F; PCP; SCCP					
Not estimated: NMVOC; Total PAH					

3.3.4 Activity data

For compost production, the standard statistics on amounts of organic domestic waste produced may be used to estimate the emissions.

For sludge spreading, the relevant activity statistics are the standard statistics on sludge production and the fraction that is dried by spreading.

3.4 Tier 3 emission modelling and use of facility data

Not available for this source.

4 Data quality

No source specific issues are applicable to this source category.

5 References

Aasestad K. (eds.) (2007). Norwegian Emission Inventory 2007. Documentation of methodologies for estimating emissions of greenhouse gases and long-range transboundary air pollutants. Report 2007/38, Statistics Norway.

Finstad, A., and K. Rypdal (2003). Utslipp til luft av kobber, krom og arsen i Norge — Dokumentasjon av metode og resultater (Emissions to air of copper, chromium and arsenic in Norway — Documentation of methodology and results). Report 2003/7, Statistics Norway.

Finstad, A., G. Haakonsen and K. Rypdal (2002a). Utslipp til luft av dioksiner i Norge — Dokumentasjon av metode og resultater (Emissions to air of dioxins in Norway — Documentation of methodology and results). Report 2002/7, Statistics Norway.

Finstad, A., G. Haakonsen, E.Kvingedal and K.Rypdal (2001). Utslipp til luft av noen miljøgifter i Norge — Dokumentasjon av metode og resultater (Emissions of some hazardous chemicals to air in Norway — Documentation of methodology and results). Report 2001/17, Statistics Norway.

Guidebook (2006). EMEP/Corinair Emission Inventory Guidebook, version 4 (2006 edition), published by the European Environmental Agency. Technical report No 11/2006. Available via <http://reports.eea.europa.eu/EMEPCORINAIR4/en/page002.html>.

Statistics Norway, Directorate for Health (1990). Retningslinjer for inneluftkvalitet (Guidelines for indoor air quality). Helsedirektoratets utredningsserie 6/90.

TNO (Netherlands Organisation for Applied Scientific Research, 2002). Coordinated European Particulate Matter Emission Inventory Program (CEPMEIP) database, www.mep.tno.nl

Tornsjø, B. (1998). Emissions of greenhouse gases in Norway — Estimated by the default IPCC methodologies and the Norwegian national inventory model. Report 98:06, Oslo, Norwegian Pollution Control Authority. Tornsjø, B. (2001). Utslipp til luft fra innenriks sjøfart, fiske og annen sjøtrafikk mellom norske havner (Emissions to Air from Fishing Fleet and Sea Traffic between Norwegian Harbours). Report 2001/6, Statistics Norway.

6 Point of enquiry

Enquiries concerning this chapter should be directed to the relevant leader(s) of the Task Force on Emission Inventories and Projection's expert panel on combustion and industry. Please refer to the TFEIP website (www.tfeip-secretariat.org/) for the contact details of the current expert panel leaders.