

Launch of the Image & Corine Land Cover 2000 database

USE OF CORINE LAND COVER DATA IN HUNGARY

István ÓRI

permanent state secretary

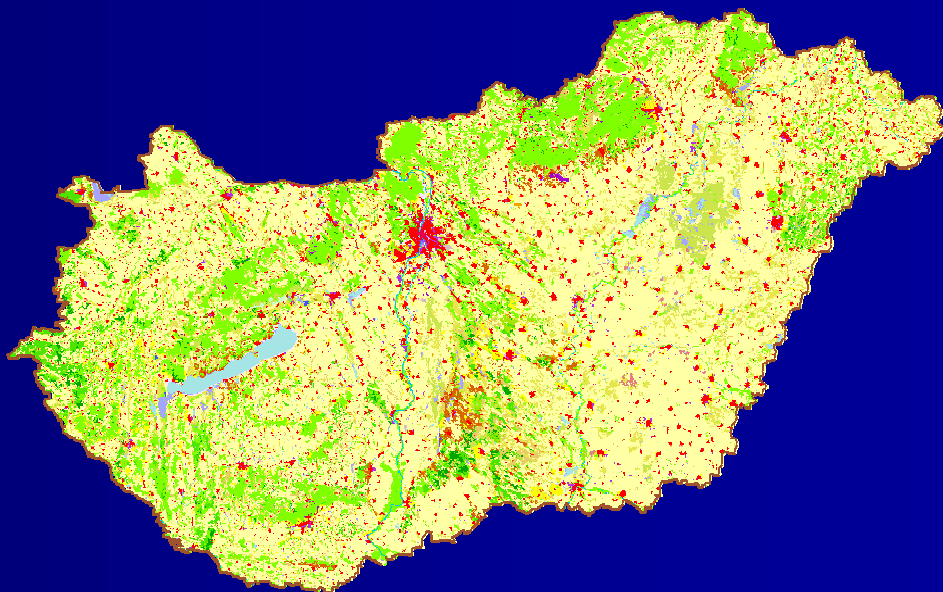
17 November 2004

Hungary at a glance

Area of the country, km²	93,030
Number of population, thousands (2004)	10,102
GDP growth (2003), 2002=100 %	103.4
Per capita income at current prices (2003), EUR/ year	7,231
Contribution to GDP (2002), %	
• agriculture	3.7
• industry and construction	30.2
• trade, tourism, transport	21.4
• other services	44.7

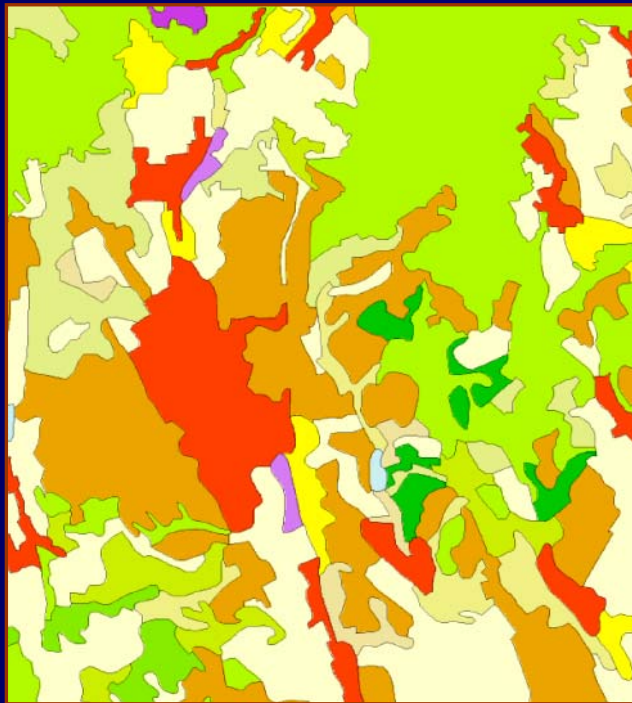
CORINE Land Cover in Hungary

- Operative crop forecasting
- Designating environmentally sensitive areas
- Natura 2000 areas



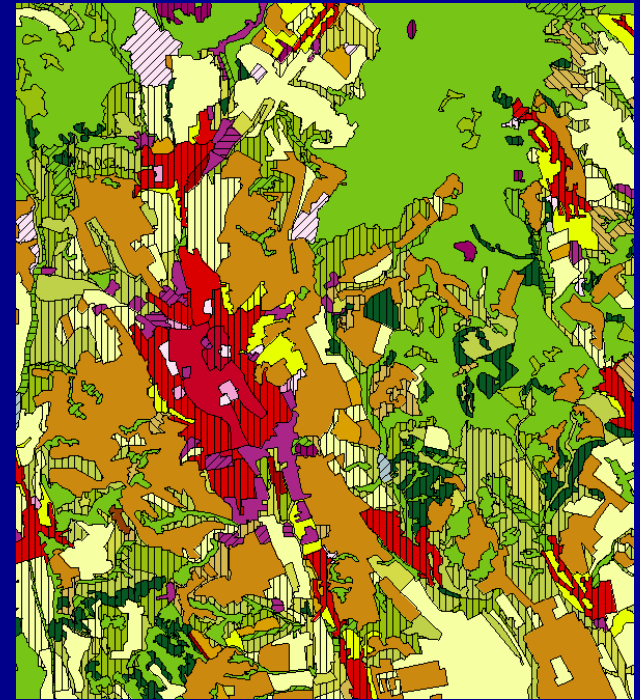
Corine Land Cover database of Hungary

from 1 : 100 000 to 1 : 50 000



1 : 100 000

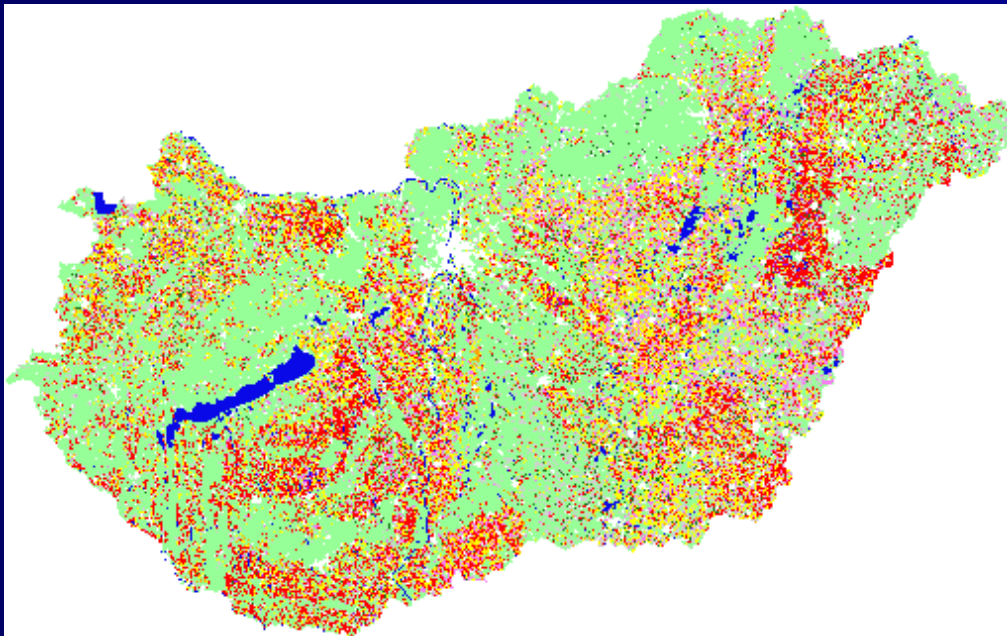
Eger
NE
Hungary



1 : 50 000

- increased geometrical resolution
- enhanced thematic resolution
- more precise delineation
- up to date (1998/99)

Crop map of Hungary, including eight major crops (2003)



8 major crops:

wheat

barley

maize

sugar-beet

sunflower

potatoes

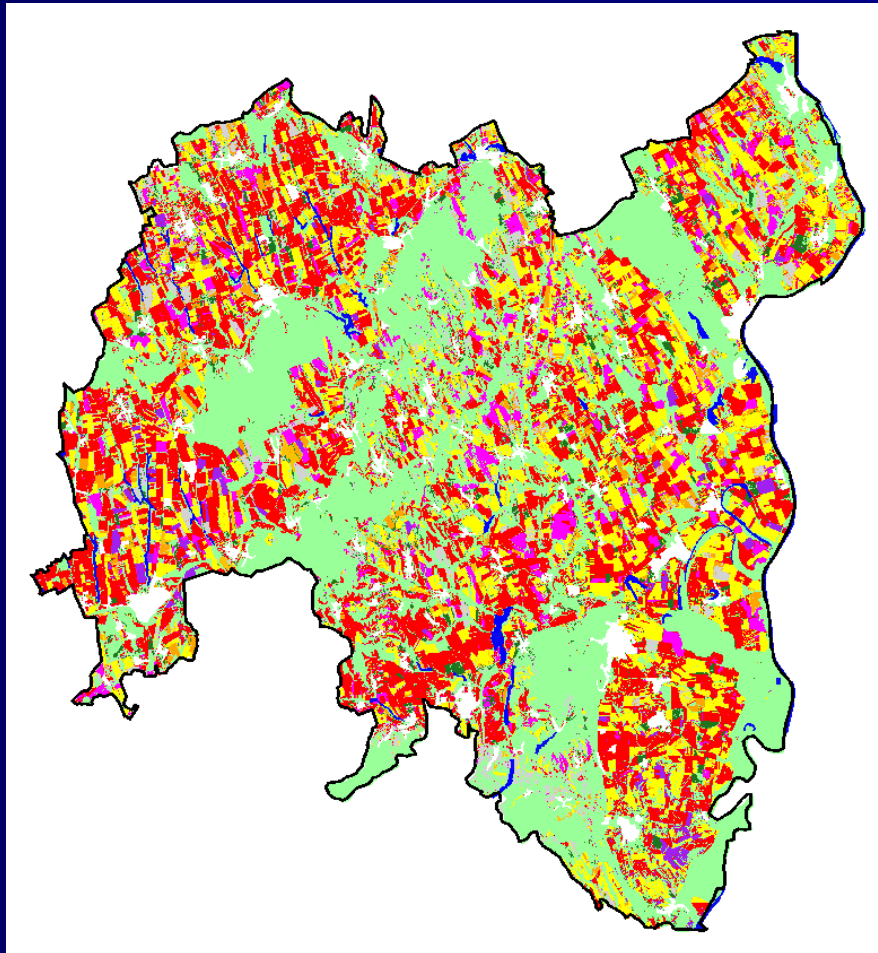
rye

oats

Evolution of Operative Crop Forecasting

- Up to 1990: some 1 400 state farms
- Land privatisation
- Hungarian Agricultural Remote Sensing Programme (HARSP from 1981 onwards)
 - 1980-1990: baseline mapping and methods
 - 1993-1996: validation
 - 1997-onwards: National Crop Monitoring Project
- National Crop Monitoring Project
 - Crop identification and area estimation
 - Crop monitoring and robust yield estimation

Final crop map



green: natural vegetation
and permanent cultures

white: artificial surfaces
(from CORINE)

blue: wetland and water
(from CORINE)

other colours: various
crops

National Agri-Environment Programme (NAEP)

Launch in 2002

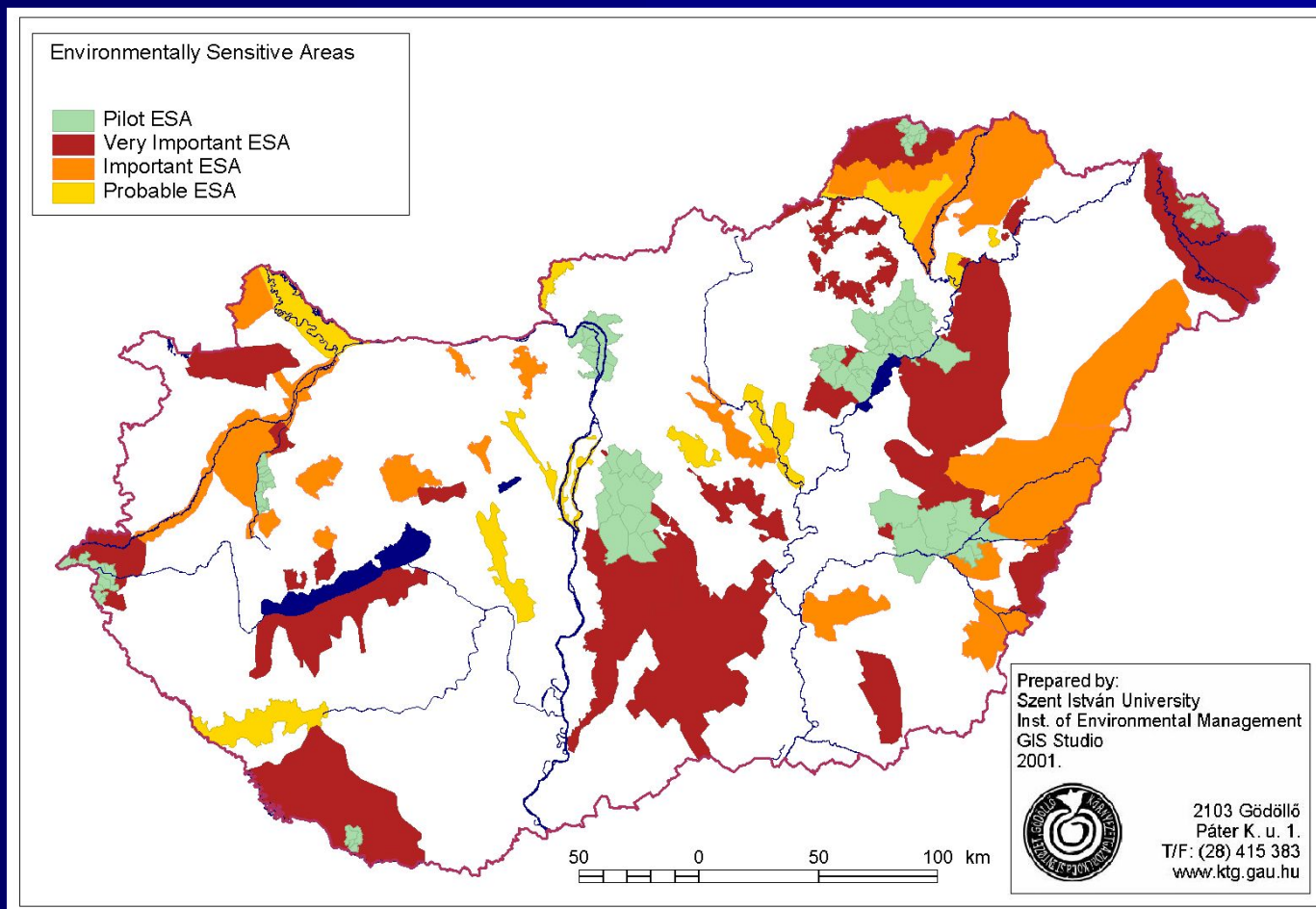
➤ Aims:

- Sustainable farming practice
- Preserving natural and landscape values
- Producing healthy product

➤ Structure:

- Agri-Environmental Basic scheme
- Integrated Production scheme
- Ecological Production scheme
- Extensive Grassland scheme
- Wetland scheme
- *Environmentally Sensitive Area schemes*
- Agri-environmental Training, Extension, and Demonstration Programmes

Categories of ESAs of Hungary

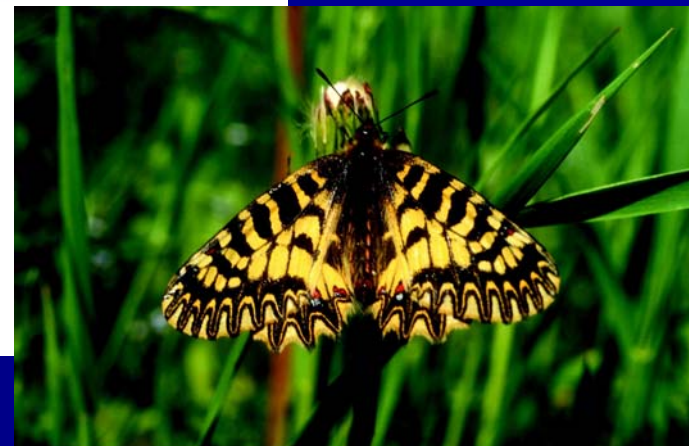
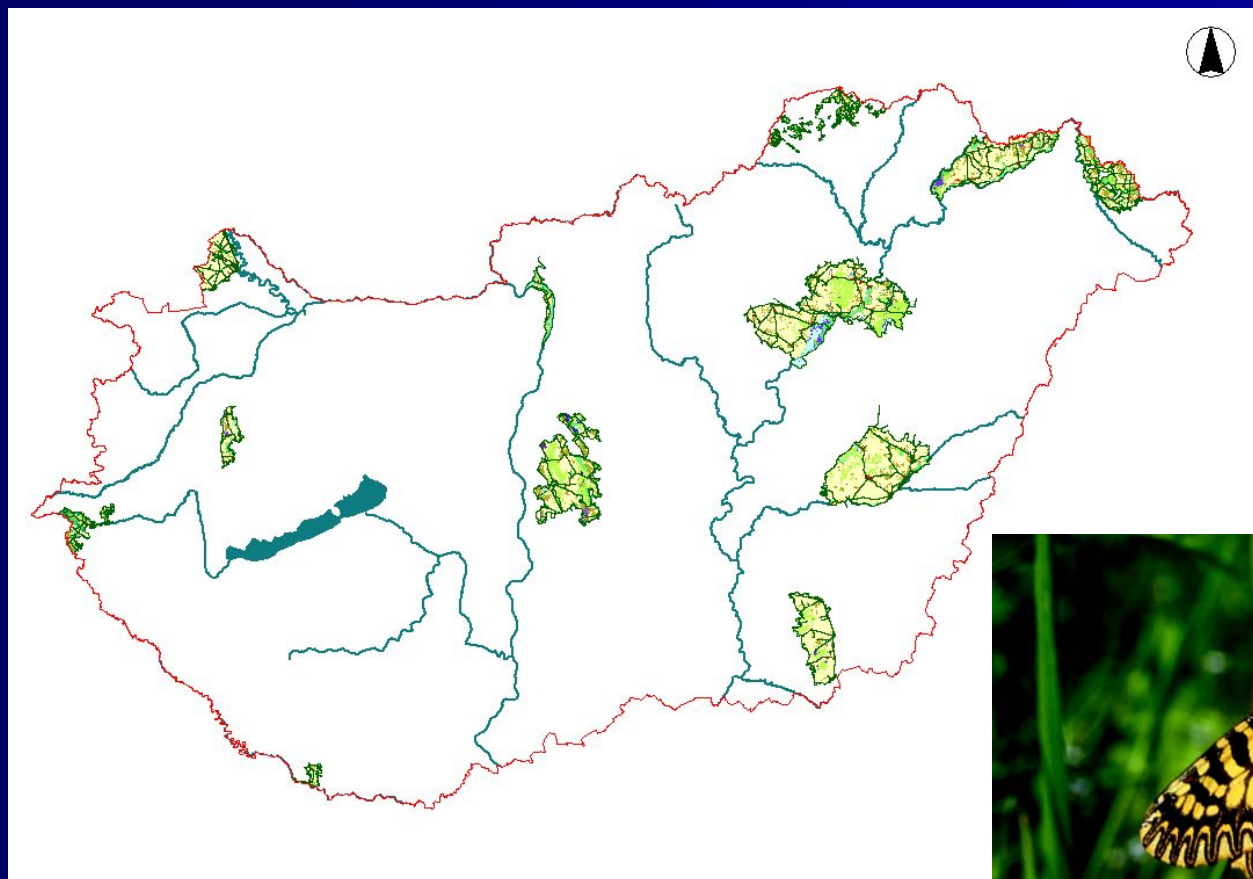


Environmentally Sensitive Areas

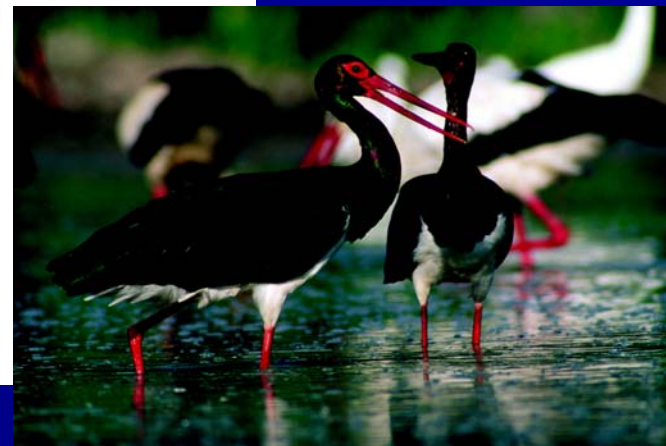
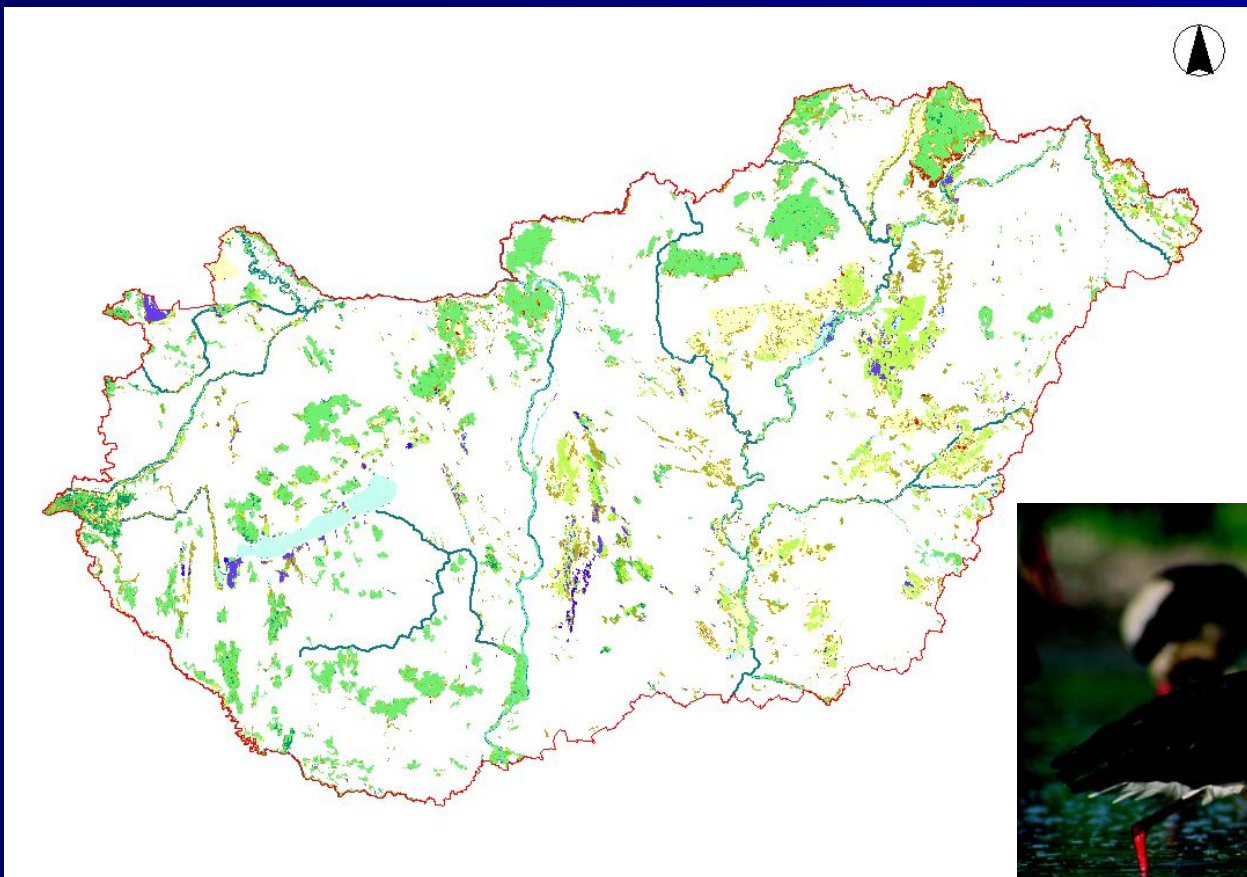
- Designating the boundaries of ESAs
- Currently there are 11 ESAs in Hungary
- 5 year management agreements with MARD



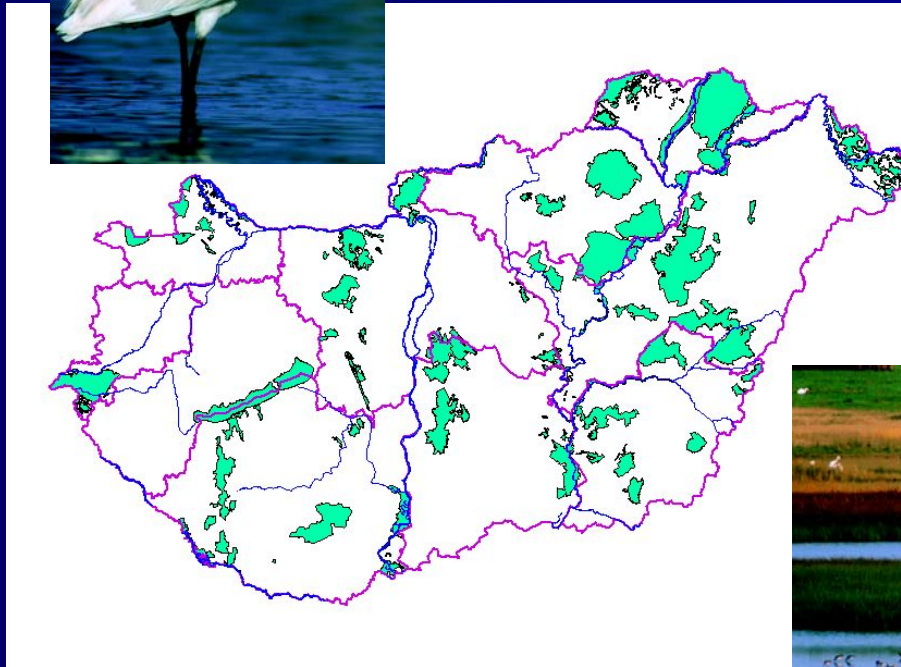
Designated Environmentally Sensitive Areas



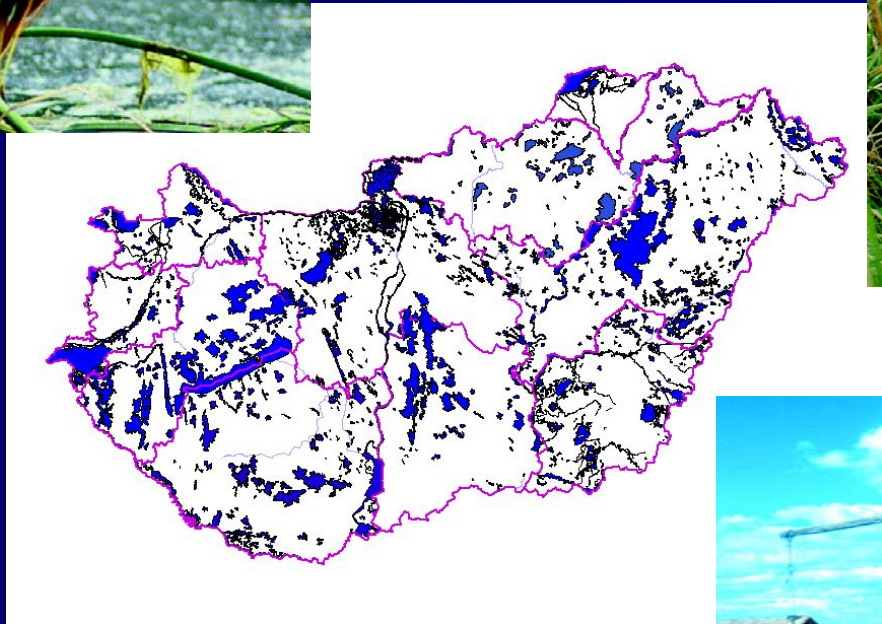
Natura 2000



Special Protection Areas



Special Areas of Conservation



The background of the slide is a blurred image of the United States flag, showing the stars and stripes in shades of blue, red, white, and green.

Thank you for your attention !