

Reported information under Regulation (EC) No 166/2006 on the establishment of a European Pollutant Release and Transfer Register

Information on the database structure and use

Database version 15



Cover design: EEA

Cover photo: Jorge Franganillo, Creative Commons Attribution 2.0 Generic (<https://goo.gl/rqHYk6>)

Layout: EEA

Acknowledgments

The dataflow is managed by Bastian Zeiger (EEA). Please refer to him for further enquiries (bastian.zeiger@eea.europa.eu).

About the database

This database contains facility-by-facility data on releases and transfers of pollutants and waste covered by Regulation (EC) No 166/2006 on the establishment of a European Pollutant Release and Transfer Register (E-PRTR Regulation) for the years 2004 to 2017. For facilities involved in activities listed in Annex I of the E-PRTR Regulation, the data include releases of pollutants listed in Annex II to air, water and land (above Annex II threshold releases only) as well as off-site transfers in waste-water. The data further includes off-site transfers of hazardous waste (above Article 5 thresholds only).

Table of contents

Acknowledgments	2
About the database	2
Table of contents	2
1 Content of the EEA dataservice entry	3
2 User friendly tables with yearly data	3
3 Complete MS Access database	3
The data model	4
Tables and fields.....	6
Queries	11
Metadata	11

1 Content of the EEA dataservice entry



The European Pollutant Release and Transfer Register (E-PRTR) is a web-based register established by Regulation (EC) No 166/2006 which implements the UNECE PRTR Protocol, signed in May 2003 in Kiev.

European data Metadata


European Pollutant Release and Transfer Register (E-PRTR) - Microsoft Access database and text format

E-PRTR data covering reporting for 2007 to 2015 by EU Member States, Iceland, Liechtenstein, Norway, Serbia and Switzerland. The Access file represents the status of the E-PRTR database as of May 2017. It provides corrected data from many countries within the period 2007 to 2015. Refer to table below under "Additional information" for the specific details of the countries and years that have been updated as compared to version 8.

[+] Show table definition

-  **E-PRTR_database_v11_csv.zip** (ZIP archive)
 - 50.35 MB [Download file](#)
-  **E-PRTR_database_v11_mdb.zip** (ZIP archive)
 - 93.68 MB [Download file](#)

European Pollutant Release and Transfer Register (E-PRTR) - KMZ format

-  **EPRTTR_facilities_v11.kmz** (ZIP archive)
 - 2.37 MB [Download file](#)

Database structure and use information

-  **EPRTTR_database_metadata_v11.pdf** (PDF document)
 - 946.87 KB [Download file](#)

User-friendly tables in Excel

These tables, in Microsoft Excel format, offer an extract of the most relevant data fields in independent sheets for each year.

-  **E-PRTR_database_extract_v11_xlsx.zip** (ZIP archive)
 - 98.64 MB [Download file](#)

CSV files containing the entire database

Microsoft Access Database

KMZ file to present facility data on a map

This metadata document

User friendly extracts in Microsoft Excel format

2 User friendly tables with yearly data

The user-friendly tables are an extract of the database containing the most relevant fields and provided in Excel format. They correspond to the queries in the MS Access database mentioned below.

This presentation of the data is meant to help those users who are not familiar with Microsoft Access.

3 Complete MS Access database

The European dataset is provided in its complete version in Microsoft Access data format. This section outlines the structure of the data, the interpretation of the data fields and the metadata of the file.

The data model

The database consists of 10 tables. Its structure is shown in the figure below.

The FACILITYREPORT table contains basic data on each facility reported by each country. This includes contact details and exact location, information about the competent authority and other facility level data. The ACTIVITY provides information about the activities reported for each facility. The POLLUTANTRELEASEANDTRANSFERREPORT table contains additional information about the delivery on the EEA's Central Data Repository (CDR) including the reporting year. FACILITYID_CHANGES contains information about facilities that have changed their internal FacilityID (a unique ID for each facility in the dataset) over time for traceability.

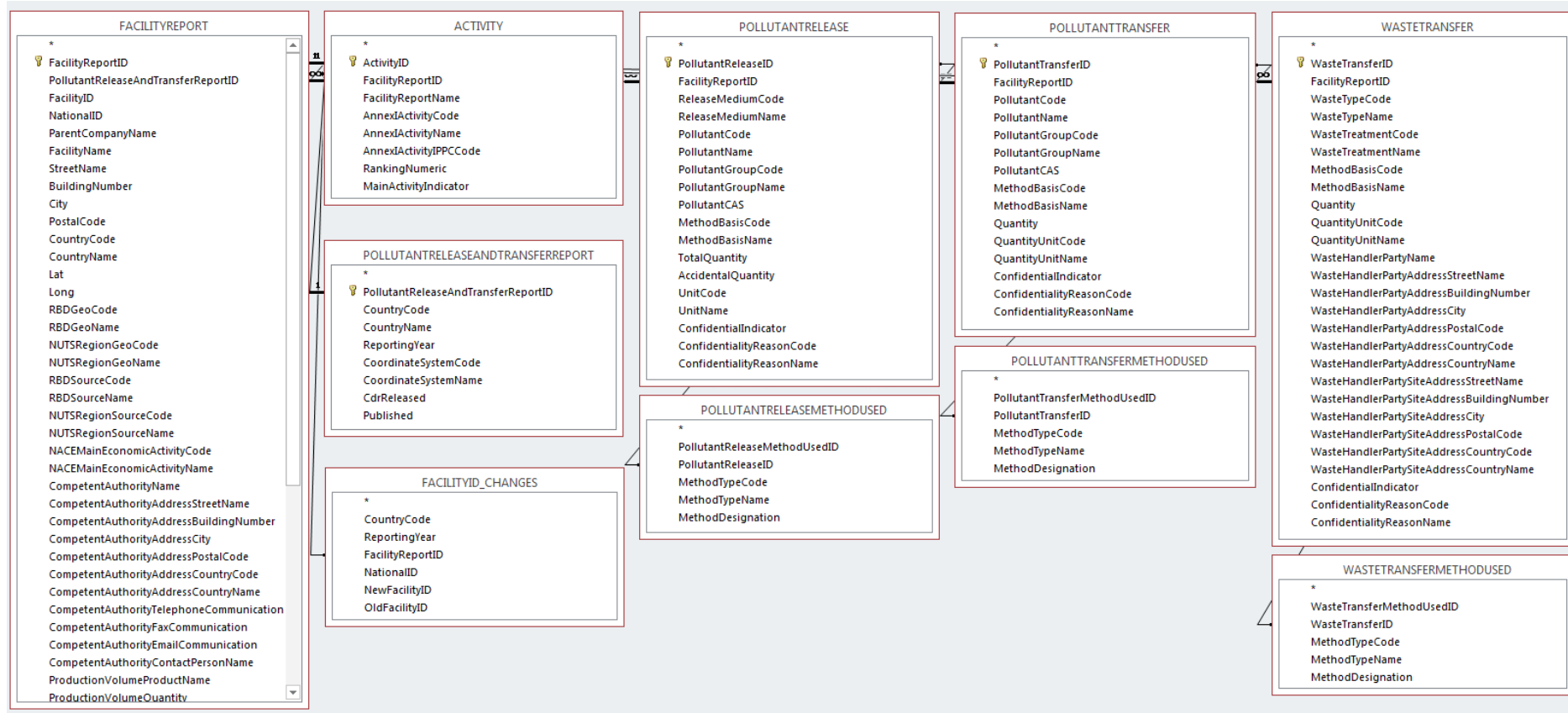
The POLLUTANTRELEASE table contains data on each pollutant release to air, water and land reported in all facility reports including the type of pollutant and quantity released. The POLLUTANTRELEASEMETHODUSED table contains data on release methods for each release.

The POLLUTANTTRANSFER table then contains data on each pollutant transfer in waste water reported in all facility reports including the type of pollutant and quantity transferred. The POLLUTANTTRANSFERMETHODUSED again contains data on the transfer method for each transfer reported.

The WASTETRANSFER table contains data on transfers of waste reported in each facility report including the type of waste and quantity transferred as well as information about whether the waste was transferred out of the country or within. The WASTETRANSFERMETHODUSED table contains data on the transfer methods used.

All fields in the various tables are described below.

Figure: Structure of the E-PRTR database



Tables and fields

The E-PRTR database contains the following tables and fields:

Fields in FACILITYREPORT

Field	Data type	Description
FacilityReportID	Int	Primary key. Required.
PollutantReleaseAndTransferReportID	Int	Identifies the report that the facility report is a part of. Required. References table FULL_POLLUTANTRELEASEANDTRANSFERR EPORT.
FacilityID	Int	Unique identification of the facility. Required.
NationalID	nvarchar(255)	National Identification of the facility. Required.
ParentCompanyName	nvarchar(255)	Name of the parent company, i.e. the company that owns or controls the company operating the facility. Required unless confidentiality is claimed.
FacilityName	nvarchar(255)	Name of the facility (operator or owner).
StreetName	nvarchar(255)	The street name of the facility.
BuildingNumber	nvarchar(255)	The building number of the facility.
City	nvarchar(255)	Name of city, where facility is located
PostalCode	nvarchar(50)	The postal code of the facility.
CountryCode	nvarchar(255)	Country code
CountryName	nvarchar(255)	Country name
Lat	Float	Latitude
Long	Float	Longitude
RBDGeoCode	nvarchar(255)	Identifies the river basin district code computed by geo-coding
RBDGeoName	nvarchar(255)	Identifies the river basin district name computed by geo-coding
NUTSRegionGeoCode	nvarchar(255)	Identifies the NUTS region code at level 2 computed by geo-coding
NUTSREGIONGeoName	nvarchar(255)	Identifies the NUTS region name at level 2 computed by geo-coding
RBDSOURCECode	nvarchar(255)	Identifies the river basin district code as reported by the RS
RBDSOURCEName	nvarchar(255)	Identifies the river basin district name as reported by the RS
NUTSRegionSOURCECode	nvarchar(255)	Identifies the NUTS region code as reported by the RS
NUTSREGIONSOURCEName	nvarchar(255)	Identifies the NUTS region name as reported by the RS
NACEMainEconomicActivityCode	nvarchar(255)	Main economic activity Code for NACE reported as NACE Code
NACEMainEconomicActivityName	nvarchar(255)	Main economic activity Name for NACE reported as NACE Code
MainEconomicActivityNameSource	nvarchar(255)	Main economic activity Name reported as text
CompetentAuthorityName	nvarchar(255)	Name of competent authority party
CompetentAuthorityAddressStreetName	nvarchar(255)	Street of competent authority party

CompetentAuthorityAddressBuildingNumber	nvarchar(255)	Building number of competent authority party
CompetentAuthorityAddressCity	nvarchar(255)	City of competent authority party
CompetentAuthorityAddressPostalCode	nvarchar(255)	Postal code of competent authority party
CompetentAuthorityAddressCountryCode	nvarchar(255)	Country code of competent authority party
CompetentAuthorityAddressCountryName	nvarchar(255)	Country name of competent authority party
CompetentAuthorityTelephoneNumber	nvarchar(255)	Telephone number of competent authority party
CompetentAuthorityFaxCommunication	nvarchar(255)	Fax number of competent authority party
CompetentAuthorityEmailCommunication	nvarchar(255)	Email of competent authority party
CompetentAuthorityContactPersonName	nvarchar(255)	Contact person at competent authority party
ProductionVolumeProductName	nvarchar(255)	Name of primary product
ProductionVolumeQuantity	float	Production quantity of primary product
ProductionVolumeUnitCode	nvarchar(255)	Unit code of quantity.
ProductionVolumeUnitName	nvarchar(255)	Unit name of quantity.
TotalIPPCInstallationQuantity	int	The total number of IPPC installations covered by the facility.
OperatingHours	int	The number of operating hours in reporting year
TotalEmployeeQuantity	int	Number of employees.
WebsiteCommunication	nvarchar(255)	The website address of Facility.
PublicInformation	nvarchar(max)	Textual information. Additional information to be published on web site as-is (e.g. e-mail, contact person etc.).
ConfidentialIndicator	bit	Indicates if confidentiality for mandatory data is claimed or not. Required.
ConfidentialityReasonCode	nvarchar(255)	Identifies the reason Code for confidentiality. Required if confidentiality is claimed for mandatory data.
ConfidentialityReasonName	nvarchar(255)	Identifies the reason Name for confidentiality. Required if confidentiality is claimed for mandatory data.
ProtectVoluntaryData	bit	Indicates if voluntary data should be protected or not
RemarkText	nvarchar(max)	Textual remark, e.g. information in changes of the history of the facility, elaboration on the reason for confidentiality etc.
MainIASectorCode	nvarchar(255)	Sector Code of main industrial activity
MainIASectorName	nvarchar(255)	Sector Name of main industrial activity
MainIAActivityCode	nvarchar(255)	Activity Code of main industrial activity
MainIAActivityName	nvarchar(255)	Activity Name of main industrial activity
MainIASubActivityCode	nvarchar(255)	Subactivity Code of main industrial activity
MainIASubActivityName	nvarchar(255)	Subactivity Name of main industrial activity

Fields in ACTIVITY

Field	Data type	Description
ActivityID	int	Primary key. Required.

FacilityReportID	nvarchar(255)	Facility report unique identifier. References table FULL_FACILITYREPORT.
FacilityReportName	float	Name of reporting facility
AnnexIActivityCode	nvarchar(255)	Industrial activity code
AnnexIActivityName	nvarchar(255)	Industrial activity name
AnnexIActivityIPPCCode	nvarchar(255)	Industrial activity IPPC code
RankingNumeric	Int	Importance ranking of respective activity
MainActivityIndicator	Bit	Indicator whether this activity is the facilities main activity

Fields in POLLUTANTRELEASEANDTRANSFERREPORT

Field	Data type	Description
PollutantReleaseAndTransferReportID	Int	Primary key. Required.
CountryCode	nvarchar(255)	The RS Code reporting. Required.
CountryName	nvarchar(255)	The RS Name reporting. Required.
ReportingYear	Int	The calendar year of which data on releases and transfers must be gathered. Required.
CoordinateSystemCode	nvarchar(255)	The coordinate system code used in reporting of coordinates.
CoordinateSystemName	nvarchar(255)	The coordinate system name used in reporting of coordinates.
CdrReleased	Datetime	The time when the report was released in Reportnet. Required.
Published	Datetime	The time when the report was released to public view

Fields in POLLUTANTRELEASE

Field	Data type	Description
PollutantReleaseID	Int	Primary key. Required.
FacilityReportID	Int	Identifies the facility report that the data belongs to. Required. References table FULL_FACILITYREPORT.
ReleaseMediumCode	nvarchar(255)	Identifies the environmental medium (air, water etc) code.
ReleaseMediumName	Nvarchar(255)	Identifies the environmental medium name.
PollutantCode	Nvarchar(255)	Identifies pollutant code
PollutantName	Nvarchar(255)	Identifies pollutant name
PollutantGroupCode	Nvarchar(255)	Identifies pollutant group code
PollutantGroupName	Nvarchar(255)	Identifies pollutant group name
PoluttantCAS	Nvarchar(255)	Pollutant CAS description
MethodBasisCode	Nvarchar(255)	Identifies the method basis code of the main method used (M/C/E).
MethodBasisName	Nvarchar(255)	Identifies the method basis name of the main method used.
TotalQuantity	Float	Total quantity including accidental quantity [t/year].

AccidentalQuantity	Float	Accidental quantity [t/year].
UnitCode	Nvarchar(255)	Identifies the unit code of the quantity
UnitName	Nvarchar(255)	Identifies the unit name of the quantity
ConfidentialIndicator	Bit	Indicates if confidentiality is claimed. Required.
ConfidentialityReasonCode	Nvarchar(255)	Identifies the reason code for confidentiality. Required if confidentiality is claimed for mandatory data.
ConfidentialityReasonName	Nvarchar(255)	Identifies the reason name for confidentiality. Required if confidentiality is claimed for mandatory data.
RemarkText	Nvarchar(max)	Textual remark, e.g. elaboration on the reason for confidentiality.

Fields in POLLUTANTRELEASEMETHODUSED

Field	Data type	Description
PollutantReleaseMethodUsedID	Int	Primary key. Required.
PollutantReleaseID	Int	Identifies the pollutant report that the data belongs to. Required. References table FULL_POLLUTANTRELEASE.
MethodTypeCode	nvarchar(255)	Identifies the method type code
MethodTypeName	Nvarchar(255)	Identifies the method type name
MethodDesignation	Nvarchar(255)	Identifies the method designation

Fields in POLLUTANTTRANSFER

Field	Data type	Description
PollutantTransferID	Int	Primary key. Required.
FacilityReportID	Int	Identifies the facility report that the data belongs to. Required. References table FULL_FACILITYREPORT.
PollutantCode	Nvarchar(255)	Identifies pollutant code
PollutantName	Nvarchar(255)	Identifies pollutant name
PollutantGroupCode	Nvarchar(255)	Identifies pollutant group code
PollutantGroupName	Nvarchar(255)	Identifies pollutant group name
PollutantCAS	Nvarchar(255)	Pollutant CAS description
MethodBasisCode	Nvarchar(255)	Identifies the method basis code of the main method used (M/C/E).
MethodBasisName	Nvarchar(255)	Identifies the method basis name of the main method used.
Quantity	Float	Total quantity of reported pollutant [t/year]
QuantityUnitCode	Nvarchar(255)	Identifies the unit code of the quantity
QuantityUnitName	Nvarchar(255)	Identifies the unit name of the quantity
ConfidentialIndicator	Bit	Indicates if confidentiality is claimed. Required.
ConfidentialityReasonCode	Nvarchar(255)	Identifies the reason code for confidentiality. Required if confidentiality is claimed for mandatory data.
ConfidentialityReasonName	Nvarchar(255)	Identifies the reason name for confidentiality. Required if confidentiality is claimed for mandatory data.
RemarkText	Nvarchar(max)	Textual remark, e.g. elaboration on the reason for confidentiality.

Fields in POLLUTANTTRANSFERMETHODUSED

Field	Data type	Description
-------	-----------	-------------

PollutantTransferMethodUsedID	Int	Primary key. Required.
PollutantTransferID	Int	Identifies the pollutant report that the data belongs to. Required. References table FULL_POLLUTANTTRANSFER
MethodTypeCode	nvarchar(255)	Identifies the method type code
MethodTypeName	Nvarchar(255)	Identifies the method type name
MethodDesignation	Nvarchar(255)	Identifies the method designation

Fields in WASTETRANSFER

Field	Data type	Description
WasteTransferID	Int	Primary key. Required.
FacilityReportID	Int	Identifies the facility report that the data belongs to. Required. References table FULL_FACILITYREPORT.
WasteTypeCode	Nvarchar(255)	Identifies the type of waste code (NON-HW, HWIC, HWOC etc.).Required.
WasteTypeName	Nvarchar(255)	Identifies the waste type name (non hazardous, hazardous within country etc.).
WasteTreatmentCode	Nvarchar(255)	Identifies the waste treatment code (R, D). Required unless confidentiality is claimed.
WasteTreatmentName	Nvarchar(255)	Identifies the waste treatment operation name (recovery or disposal).
MethodBasisCode	Nvarchar(255)	Identifies the basis code of the main method used (M/C/E). Required unless confidentiality is claimed.
MethodBasisName	Nvarchar(255)	Identifies the basis name of the main method used.
Quantity	Float	Quantity [t/year] Required unless confidentiality is claimed.
QuantityUnitCode	Nvarchar(255)	Identifies the unit code of the quantity (Must correspond to ton) Required unless confidentiality is claimed.
QuantityUnitName	Nvarchar(255)	Identifies the unit name of the quantity.
WasteHandlerPartyName	Nvarchar(255)	Identifies the recoverer/disposer of the waste. Required for transfer of hazardous waste outside the country unless confidentiality is claimed.
WasteHandlerPartyAddressStreetName	Nvarchar(255)	The street name of the WHP
WasteHandlerPartyAddressBuildingNumber	Nvarchar(255)	The building number of the WHP
WasteHandlerPartyAddressCity	Nvarchar(255)	Name of city, where WHP is located
WasteHandlerPartyAddressPostalCode	Nvarchar(50)	The postal code of the WHP
WasteHandlerPartyAddressCountryCode	Nvarchar(255)	Country code of WHP
WasteHandlerPartyAddressCountryName	Nvarchar(255)	Country name of WHP
WasteHandlerPartySiteAddressStreetName	Nvarchar(255)	Site street name of the WHP
WasteHandlerPartySiteAddressBuildingNumber	Nvarchar(255)	Site building number of the WHP
WasteHandlerPartySiteAddressCity	Nvarchar(255)	Name of city, where WHP site is located
WasteHandlerPartySiteAddressPostalCode	Nvarchar(50)	The postal code of the WHP site
WasteHandlerPartySiteAddressCountryCode	Nvarchar(255)	Country code of WHP site

WasteHandlerPartySiteAddressCountryName	Nvarchar(255)	Country name of WHP site
ConfidentialIndicator	Bit	Indicates if confidentiality is claimed. Required.
ConfidentialityReasonCode	Nvarchar(255)	Identifies the reason code for confidentiality. Required if confidentiality is claimed.
ConfidentialityReasonName	Nvarchar(255)	Identifies the reason name for confidentiality.
RemarkText	nvarchar(max)	Textual remark, e.g. elaboration on the reason for confidentiality.

Fields in WASTETRANSMETHODUSED

Field	Data type	Description
WasteTransferMethodUsedID	Int	Primary key. Required.
WasteTransferID	Int	Identifies the waste transfer report that the data belongs to. Required. References table FULL_WASTETRANSMETHODUSED
MethodTypeCode	nvarchar(255)	Identifies the method type code
MethodTypeName	Nvarchar(255)	Identifies the method type name
MethodDesignation	Nvarchar(255)	Identifies the method designation

Queries

The database also contains queries to read the most important data on pollutant releases, pollutant transfers and waste transfers from the database.

Metadata

Reporting obligation: E-PRTR data reporting - <http://rod.eionet.europa.eu/obligations/538>

Temporal coverage: 2004 – 2017

Geographic coverage: Austria, Belgium, Bulgaria, Croatia (from 2014), Cyprus, Czech Republic, Denmark, Estonia, Finland, France, Germany, Greece, Hungary, Iceland, Ireland, Italy, Latvia, Liechtenstein, Lithuania, Luxembourg, Malta, Netherlands, Norway, Poland, Portugal, Romania, Serbia, Slovakia, Slovenia, Spain, Sweden, Switzerland, United Kingdom.

Units:

Pollutant releases and transfers are reported in kg/year.

Waste transfers are reported in t/year.