

Reported information under Directive 2001/80/EC, on large combustion plants

Information on the database structure and use



Cover design: EEA

Cover photo: Jorge Franganillo, Creative Commons Attribution 2.0 Generic (<https://goo.gl/rqHYk6>)

Layout: EEA

Acknowledgments

The compilation of the database and the drafting of this document was coordinated by the European Environment Agency (EEA) in cooperation with the European Topic Centre on Air and Climate Change (ETC/ACM, <http://acm.eionet.europa.eu/>). The specific partner for this task was Umweltbundesamt-Austria.

In case of need of clarifications on this database please contact the EEA enquiries service at info@eea.europa.eu.

About the database

This database contains plant-by-plant data on Large Combustion Plants (LCP) for the years 2004 to 2014. The data include rated thermal input, annual energy input and emissions of SO₂, NO_x and dust. In addition, information on opt-outs and on other derogations is provided.

The data for 2004 to 2012 were reported by EU Member States to the European Commission. Data for 2013 and 2014 were reported to the EEA and Member States were asked for feedback, including on a comparison with data reported under the European Pollutant Release and Transfer Register (E-PRTR), and on the historical linking of the various datasets of the years 2004 to 2013.

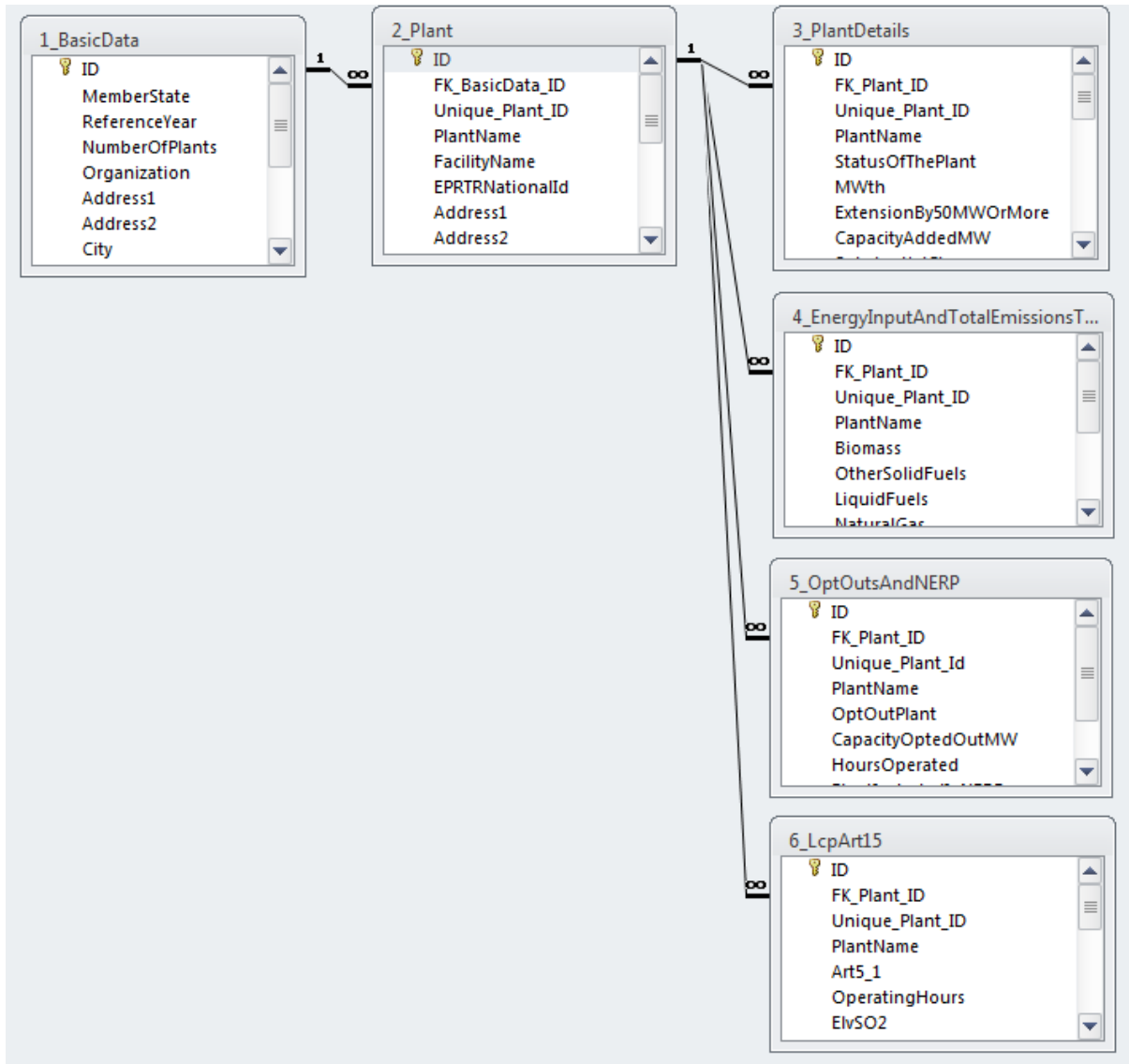
Data reported for the years 2007 to 2012 were checked for consistency/completeness by an external consultant on behalf of the European Commission. For the data of 2004 to 2006, no such checks were carried out and these data may be inconsistent or incomplete in some cases.

The data model

The database consists of 6 tables. Its structure is shown in the figure below. The table 1_BasicData contains one entry for each Member State and each year. The table 2_Plant contains entries for each individual plant and year.

Tables 3 to 6 contain corresponding entries for each plant and year included in table 2_Plant. Table 5_OptOutsAndNerps contains either one or more entries for each plant and year.

Figure: Structure of the LCP database v2



The field "ID" in table 1_BasicData is the foreign key for table 2_Plant. The field "ID" in table 2_Plant is the foreign key for tables 3 to 6. The IDs and foreign keys are in "hidden mode" in the Access data tables. All fields in the various tables are described below.

Tables and fields

The database gives access to the full dataset as reported by countries. Certain fields have been hidden in MS Access as they only relate to internal aspects of the relational database and are not storing actual data (e.g. primary and foreign keys across tables, etc.).

The LCP database contains the following tables and fields:

Fields in Table 1_BasicData

- ID (AutoValue, hidden field): Key for this table
- Member State (Text): Two-letter ISO2 country code
- ReferenceYear (Number): Year which the inventory data refers to
- NumberOfPlants (Number): number of plants reported by a Member State in a given year
- Organization (Text): Name of the organization reporting the data
- Address1, Address2, City, State, PostalCode, NameOfContactPerson, Phone, Email (Text): Contact details of the reporting organization

Fields in Table 2_Plant

- ID (AutoValue, hidden field): Key for this table
- FK_BasicData_ID (Text, hidden field): Foreign key, linking each entry in Table 2_Plant to the corresponding year and Member State in table 1_BasicData
- Unique_Plant_ID (Text): Identifier of the plant which stays the same over time. It consists of the two-letter country code and a four-digit number.
- PlantName (Text): Name of the plant
- FacilityName (Text): Name of the E-PRTR Facility associated with the plant
- EPRTRNationalID (Text): National identifier of the E-PRTR Facility associated with the plant
- Address1, Address2, City, Region, PostalCode (Text): Address details of the plant.
- Longitude (Text): Geographical longitude of the plant (in decimal degrees)
- Latitude (Text): Geographical latitude of the plant (in decimal degrees)

Fields in Table 3_PlantDetails

- ID (AutoValue, hidden field): Key for this table
- FK_Plant_ID (Text, hidden field): Foreign key, linking each entry in Table 3_PlantDetails to the corresponding plant in table 2_Plant
- Unique_Plant_ID (Text): Identifier of the plant which stays the same over time. It consists of the two-letter country code and a four-digit number.
- PlantName (Text): Name of the plant
- StatusOfThePlant (Text): Whether the plant falls under Article 4(1), 4(2) or 4(3) of the LCP Directive (depending on the date of start of operation)
- MWth (Number): Rated thermal input of the plant (megawatts thermal – MWth)
- ExtensionBy50MWOrMore (True/false): This entry is true where the plant has been extended by more than 50 MWth (rated thermal input) in the reporting year
- CapacityAddedMW (Number): Increase in rated thermal input due to this extension, in MWth
- Substantial change (True/false): This entry is true where the plant has undergone a substantial change in operation according to Article 12 of the LCP Directive in the reporting year
- CapacityAffectedMW (Number): Capacity affected by this substantial change (MWth)
- DateOfStartOfOperation (Text): Date when the plant started operating
- Refineries (True/false): This entry is true where the plant is part of a refinery

- OtherSector (Text): Name of the plant's sector (other than refinery)
- GasTurbine (True/false): This entry is true where the plant includes a gas turbine
- GasTurbineThermalInput (Number): Rated thermal input of the gas turbine (MWth)
- Boiler (True/false): This entry is true where the plant includes a boiler
- BoilerThermalInput (Number): Rated thermal input of the boiler (MWth)
- GasEngine (True/false): This entry is true where the plant includes a gas engine
- GasEngineThermalInput (Number): Rated thermal input of the gas engine (MWth)
- DieselEngine (True/false): This entry is true where the plant includes a diesel engine
- DieselEngineThermalInput (Number): Rated thermal input of the diesel engine (MWth)
- Other (True/false): This entry is true where the plant includes another type of combustion engine
- OtherTypeOfCombustion (Text): This entry specifies the type of this combustion engine
- OtherThermalInput (Number): Rated thermal input of the other combustion engine (MWth)
- OperatingHours (Number): Operating hours of the LCP
- Comments (Text): Comments by the reporting authority

Fields in Table 4_EnergyInputAndTotalEmissionsToAir

- ID (AutoValue, hidden field): Key for this table
- FK_Plant_ID (Text, hidden field): Foreign key, linking each entry in Table 4 to the corresponding plant in table 2_Plant
- Unique_Plant_ID (Text): Identifier of the plant which stays the same over time. It consists of the two-letter country code and a four-digit number.
- PlantName (Text): Name of the plant
- Biomass (number): Total biomass energy input of the plant in the reporting year (TJ)
- OtherSolidFuels (number): Total energy input of other solid fuels of the plant in the reporting year (TJ)
- LiquidFuels (number): Total liquid fuel energy input of the plant in the reporting year (TJ)
- NaturalGas (number): Total natural gas energy input of the plant in the reporting year (TJ)
- OtherGases (number): Total energy input of other gases of the plant in the reporting year (TJ)
- SO2 (number): Total of SO₂ emissions of the plant in the reporting year (t)
- NOx (number): Total of NO_x emissions of the plant in the reporting year (t)
- Dust (number): Total of dust emissions of the plant in the reporting year (t)

Fields in Table 5_OptOutsAndNERP

- ID (AutoValue, hidden field): Key for this table
- FK_Plant_ID (Text, hidden field): Foreign key, linking each entry in Table 5 to the corresponding plant in table 2_Plant
- Unique_Plant_ID (Text): Identifier of the plant which stays the same over time. It consists of the two-letter country code and a four-digit number.
- PlantName (Text): Name of the plant
- OptOutPlant (True/false): This entry is true where the plant is included in the opt-out regime under the LCP
- CapacityOptedOutMW (Number): Capacity (rated thermal input) covered by the opt-out regime (MWth)
- HoursOperated (number): Total time of operation from 1 January 2008 until the end of the reporting year (hours)
- PlantIncludedInNERP (True/false): This entry is true if the plant is included in a National Emissions Reduction Plan (NERP)

Fields in Table 6_LcpArt15

- ID (AutoValue, **hidden field**): Key for this table
- FK_Plant_ID (Text, **hidden field**): Foreign key, linking each entry in Table 6 to the corresponding plant in table 2_Plant
- Unique_Plant_ID (Text): Identifier of the plant which stays the same over time. It consists of the two-letter country code and a four-digit number.
- PlantName (Text): Name of the plant
- Art5_1 (True/false): This entry is true if the plant falls under a derogation according to Article 5(1) of the LCP Directive
- OperatingHours (Number): Time of operation in the reporting year (hours)
- ElvSO2 (Number): SO₂ emission limit value applied (mg/Nm³)
- NotaBeneAnnexIII (True/false): This entry is true if the plant falls under the “nota bene” provision in Annex III of the LCP Directive
- NotaBeneElvSO2 (Number): SO₂ emission limit value applied under the “nota bene” provision (mg/Nm³)
- DesulphurisationRate (Number): Desulphurisation rate of the plant (%)
- SInput (Number): Sulphur input into the plant in the reporting year (t)
- AnnexVI_A_Footnote2 (True/false): This entry is true if the plant falls under Annex VI(A), Footnote 2 of the LCP Directive
- AnnexVI_A_Footnote2_OperatingHours (Number): Time of operation in the reporting year (hours)
- ElvNOX (Number): NO_x emission limit value applied (mg/Nm³)
- AnnexVI_A_Footnote3 (True/false): This entry is true if the plant falls under Annex VI(A), Footnote 3 of the LCP Directive
- AnnexVI_A_Footnote3_ELVNOx (Number): NO_x emission limit value applied (mg/Nm³)
- Comments (Text): Comments by the reporting authority

Overview query

The database also contains a query which combines tables 1, 2, 3 and 4, in order to allow for a display of data from several tables.

The query can be found under “Queries” – “Overview”. It combines the following fields: Member State – Reference year – Unique Plant ID – Plant Name – Rated Thermal Input (“MWth”) – Energy inputs (biomass, other solid fuels, liquid fuels, natural gas, other gases) – Emissions (SO₂, NO_x, dust).

Metadata

Reporting obligation:

Summary of emission inventory for large combustion plants (LCP), Art. 4.(4) and 15.(3).

<http://rod.eionet.europa.eu/obligations/9>

Temporal coverage:

2004 – 2014

Geographic coverage:

Austria, Belgium, Bulgaria, Croatia (from 2010), Cyprus, Czech Republic, Denmark, Estonia, Finland, France, Germany, Greece, Hungary, Ireland, Italy, Latvia, Lithuania, Luxembourg, Malta, Netherlands, Poland, Portugal, Romania, Slovakia, Slovenia, Spain, Sweden, United Kingdom, Kosovo (UNSCR 1244/99; for 2014).

Units:

Total energy input, related to net calorific value (TJ/year)

SO₂, NO_x and dust emissions (t/year)

Rated thermal input (MWth)